

NO. Z-1603

"A" to "B"

Desc. At the Southeast corner of Hillside and Grand

By Nana L. Cozine Tuttle by Bob Nelson

DOA BODY ACTION

2-14-74 MAPC denied

3-5-74 BCC denied

file discarded 2-9-82

Resolution No. \_\_\_\_\_ Published \_\_\_\_\_ (T9-201)

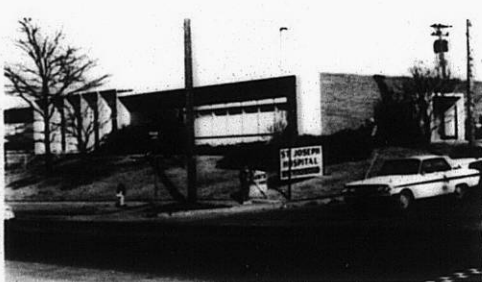
Z-1603

STE

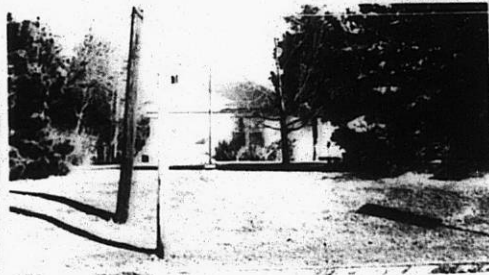
STE

Z-1603

1.



2.



3.



4.

5.



6.

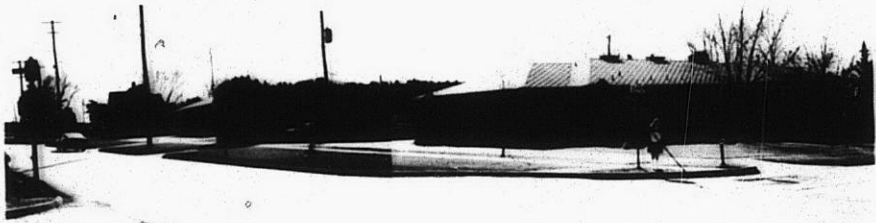


Z-1603

113

113

2.



3.



4.



5.

6.

Z-1603

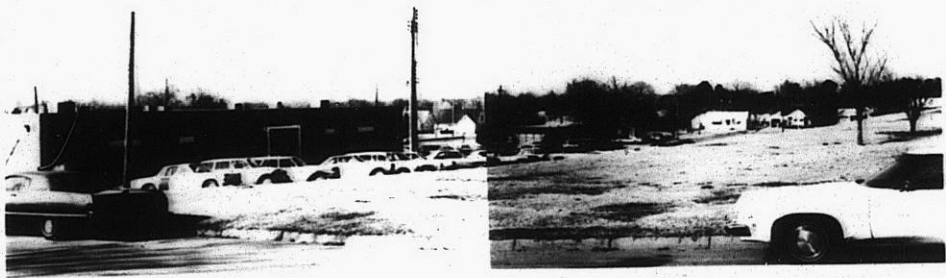
7.



8.



9.



10.



310

X 52