

NO. Z-1604 *Maple Lane 2nd Add* "AA" to "R-5" *(504K)*

Desc. At the Southeast corner of Maple and Maple Lane

By Thelma Grantham & Bill Grantham, et al by John Callahan
DOA BODY ACTION

2-14-74 MAPC *approved, subj to condition*
3-5-74 BCC *approved*

closed
file discarded 2-9-82

Resolution No. 35-138 Published 9-6-77 (T9-201)

Z-1604

319

348

Z-1604

1



2



3



4



5

6

7

8



9

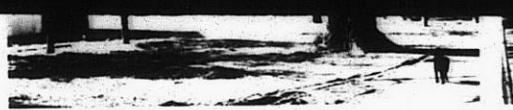


30

34x



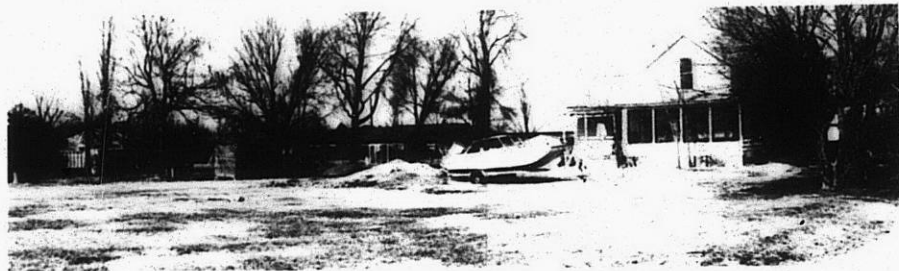
5.



6.



7.



8.



9.



10.

Z-1604



11.



12.



13.

313
313