

NO. Z-1605

"A" to "R-6"

Desc. At the Northeast corner of Richmond and Newell

By Moeder Construction Company, Inc. by Virgil J. Moeder

DOA	BODY	ACTION
<u>2-14-74</u>	<u>MAPC</u>	<u>denied</u>
<u>3-5-74</u>	<u>BCC</u>	<u>denied</u>

file discarded 2-9-82

Resolution No. \_\_\_\_\_ Published \_\_\_\_\_ (T9-201)

Z-1605

31

34X

Z-1605

1.



2.



3.



4.



5.



6.

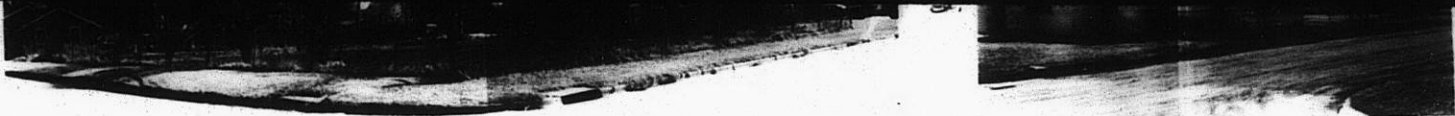


Z-1605

55

55

4.



6.

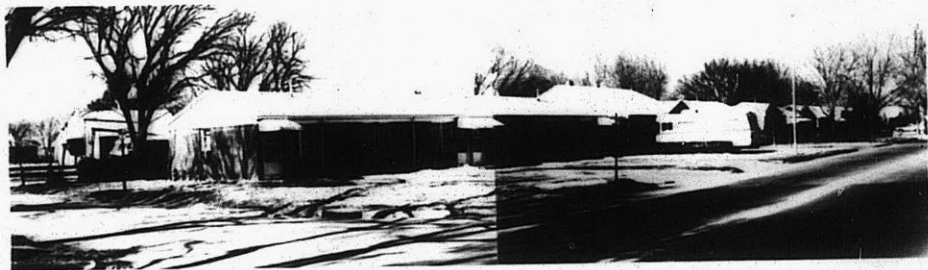


Z-1605

7.



8.



13E

13E