

NO. Z-1611 "AA" to "C"

Desc. South side of 47th St. South in an area between
LaClede and Seneca.

By Mrs. Della Nelson

DOA	BODY	ACTION
<u>3-14-74</u>	<u>MAPC</u>	<u>denied</u>
<u>4-2-74</u>	<u>BCC</u>	<u>denied</u>

file discarded 2-9-82

Resolution No. _____ Published _____ (T9-201)

Z-1611

344

34X

Z-1611

1.



2.

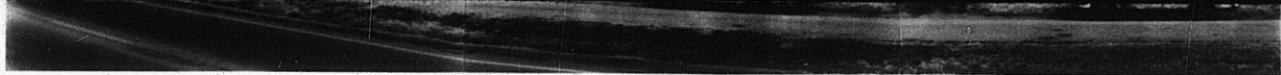


3.



115

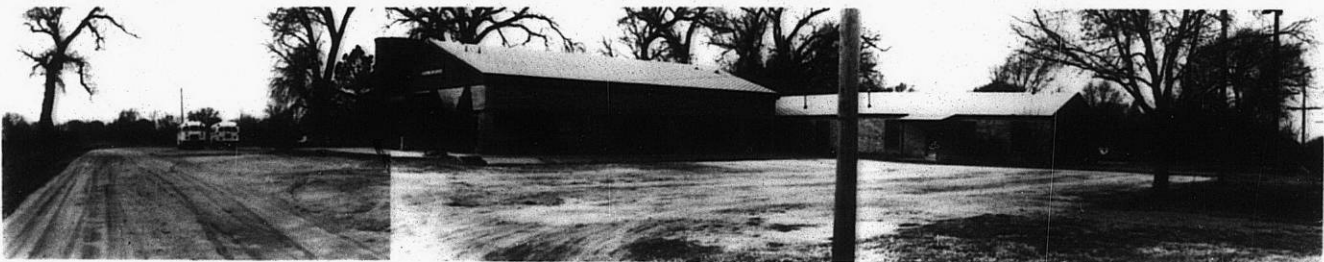
115



3.



4.



Z-1611



5.



6.



7.

300

XBE