

NO. Z-1613 "AA" to "LC"

Desc. North of the Kansas Turnpike between Clifton
and K-15 Highway.

By Douglas Battershell

DOA	BODY	ACTION
3-14-74	MAPC	approved, subj to platting
4-2-74	B.C.C.	returned to mapc
4-25-74	mapc	withdrawn by applicant instructed to return fee
file discarded 2-9-82		
closed 4-25-74		

Resolution No. _____ Published _____ (T9-201)

Z-1613

319

321

Z-1613

1



2.

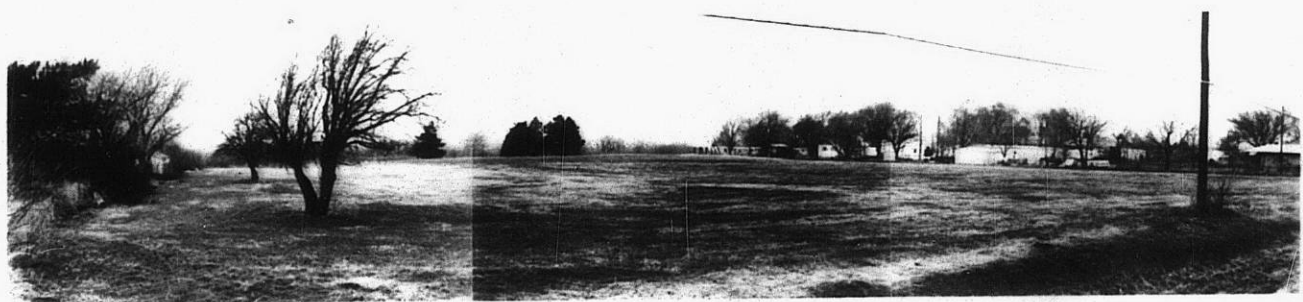


STE

STE



2.



2-1613

3.



4.



5.



3E

XE