

NO. Z-1615 "A" to "R-6"

Desc. Northwest corner of 16th and Arkansas

By S. J. Glaves

DOA	BODY	ACTION
3-28-74	MAPC	"most" note forwarded without recommendation
4-30-74	REC	denied

Resolution No. _____ Published _____ (T9-201)

Z-1615

319

34x

Z-1615

1.



2.



3.



4.



5.



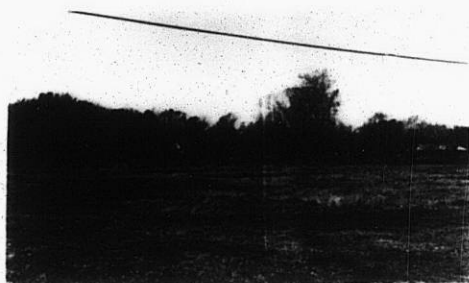
3E

3E

3.



4.



5.



6.

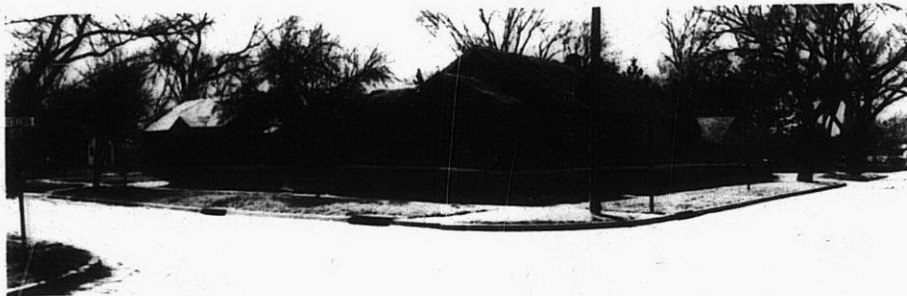


7.



Z-1615

8.



9.



3E
X 3E