

NO. Z-1619

"AA" to "LC"

Desc. Southeast corner of Maple and Ridge Road.

By Howard P. House  
~~William King, et. al.~~ by Robt. Nelson

DOA	BODY	ACTION
3-28-74	MAPC	Refused
4-11-74	mapc	denied
4-30-74	BCC	denied

file discarded 2-9-82

Resolution No. \_\_\_\_\_ Published \_\_\_\_\_ (T9-201)

Z-1619

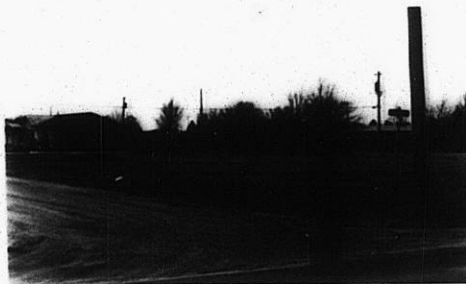
311

312

Z-1619



1.



2.



3.



4.



5.



6.

Z-1619

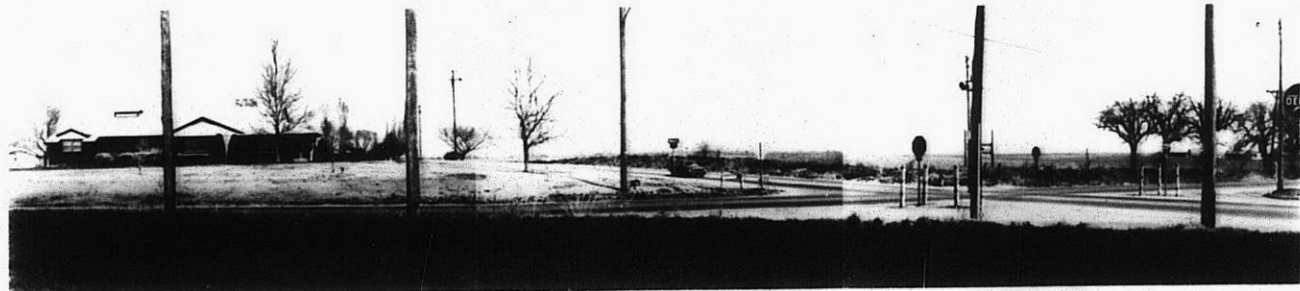
34



4.



5.

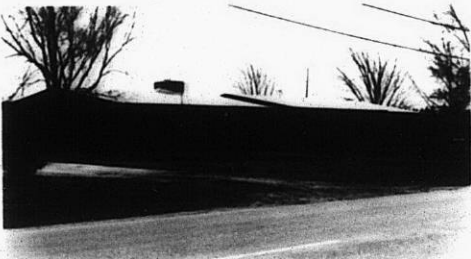


6.

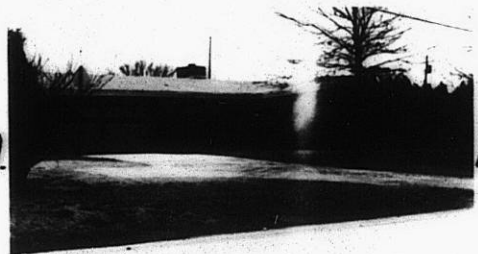
2-1619



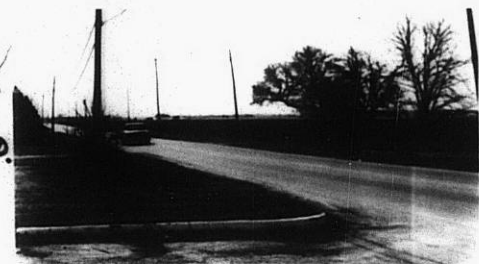
7.



8.



9.



10.

X 13

X 13