

NO. 2-1620 5345 "RB" & "A" to "C"

Desc. Southeast corner of Meridian and Esthner.

By R. W. Veazey by Professional Engineering Consultants

DOA	BODY	ACTION
<u>3-28-74</u>	<u>MAPC</u>	<u>approved</u>
<u>4-16-74</u>	<u>BCC</u>	<u>approved as recommended only to platting</u>

file discarded 2-9-82

Resolution No. 33-539 Published 11-27-74 (T9-201)

2-1620

34

34

Z-1620

1.



2.



3.



4.



5.



Z-1620

34

34

2.



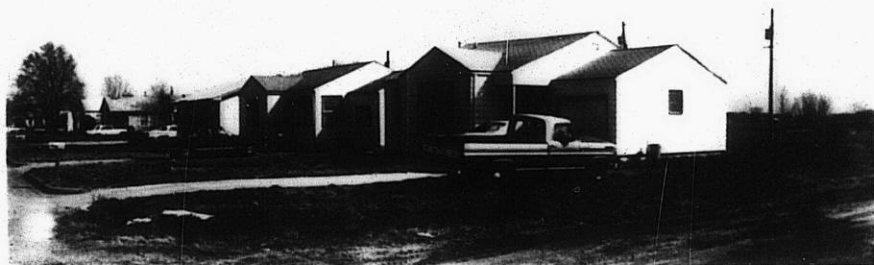
3.



4.



5.



Z-1620

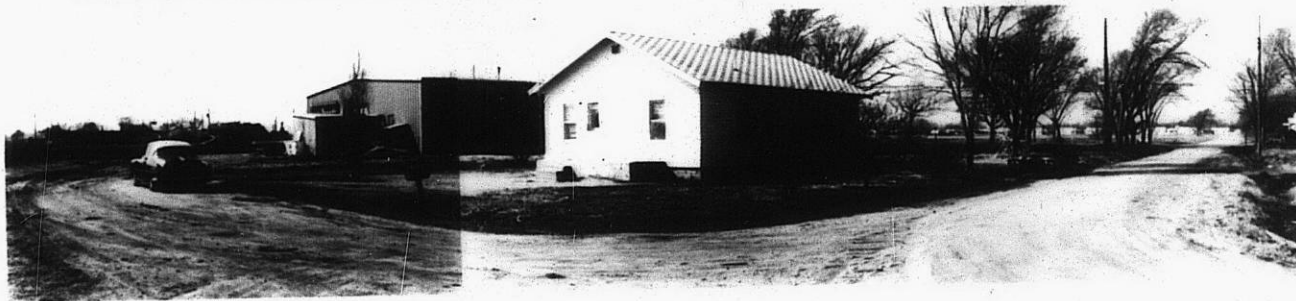
6.



7.



8.



312

312