

NO. Z-1621 "AA" to "E"

Desc. East side of Custer, north of Savannah.

By Dorothea Carter, et. al by Ronald Wilkinson

DOA BODY ACTION

4-11-74 MAPC denied

4-30-74 BCC denied

file discarded 2-9-82

Resolution No. \_\_\_\_\_ Published \_\_\_\_\_ (T9-201)

Z-1621

319

X7E

Z-1621

1.



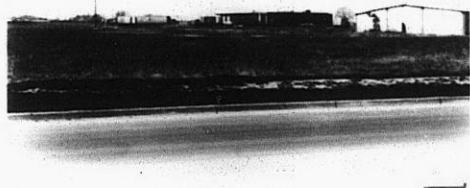
2.



3.



4.



310

34x