

NO. Z-1623 Womer Plaza "AA" & "LC" to "LC" (5351)

Desc. Southwest corner of 37th St. North and  
K-96 Highway.

By Womer Development Company by Jan Jester

DOA	BODY	ACTION
4-25-74	MAPC	App sub to platting
5-14-74	BCC	App not recommended
2-17-76	BCC	granted extension of plat.
8-17-76	BCC	

See DP 29 amendment closed

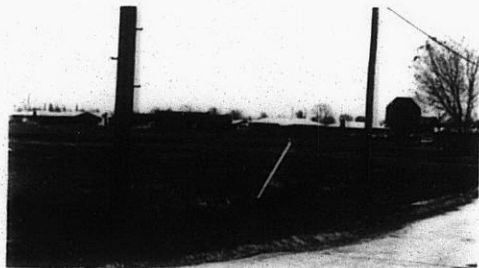
Ordinance No. 35-250 file discarded 2-9-82 Published 11-10-77 (T9-201)

Z-1623

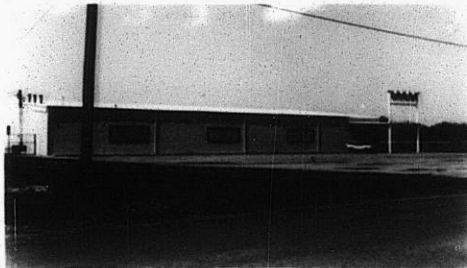
OTE

XBE

Z-1623



1.



2.



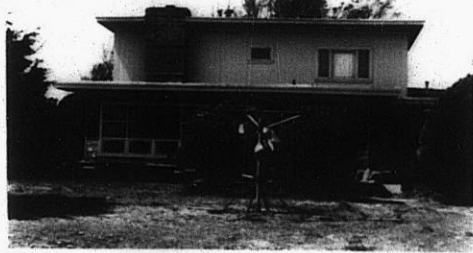
3.



4.



5.



6.



Z-1623

319

XBE

4.



5.



6.

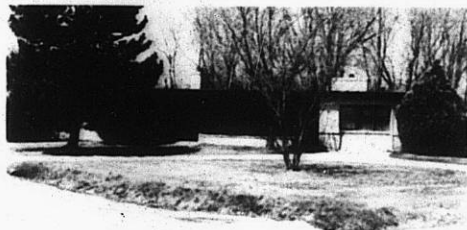


Z-1623

7.



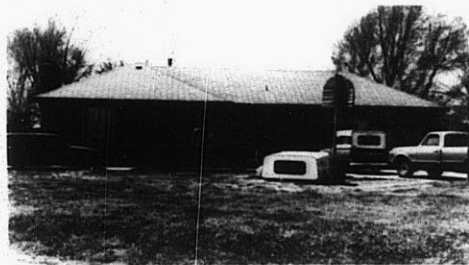
8.



9.



10.



11.

310

XBE