

NO. Z-1624 5542 "AA" to "C"

Desc. Southwest corner of MacArthur and Sunflower.

By Darrell W. Lambert by Richard Wooley

DOA	BODY	ACTION
4-25-74	MAPC	App sub to platting
5-14-74	BCC	App ex recommended

file discarded 2-9-82

Resolution No. 33-823 Published 5-28-75 (T9-201)

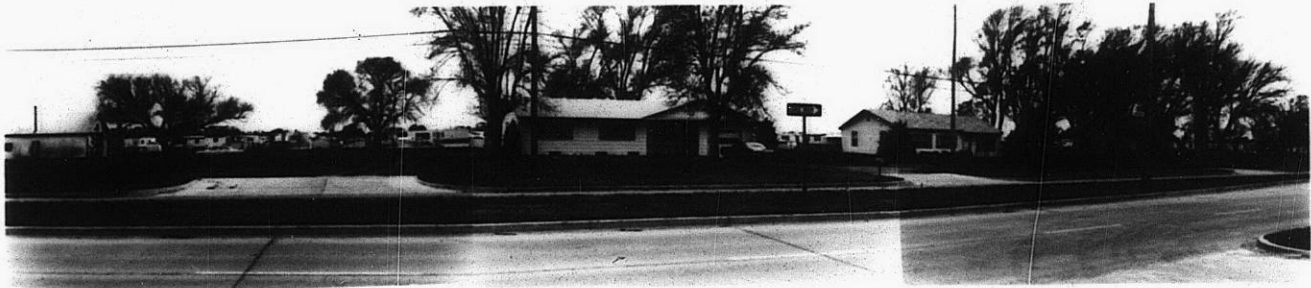
Z-1624

509

152

Z-1624

1.

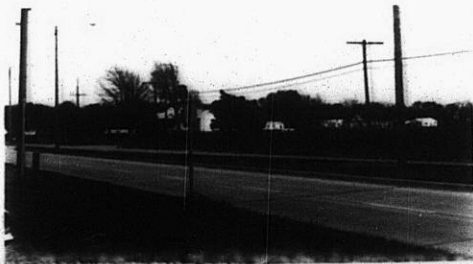


2.

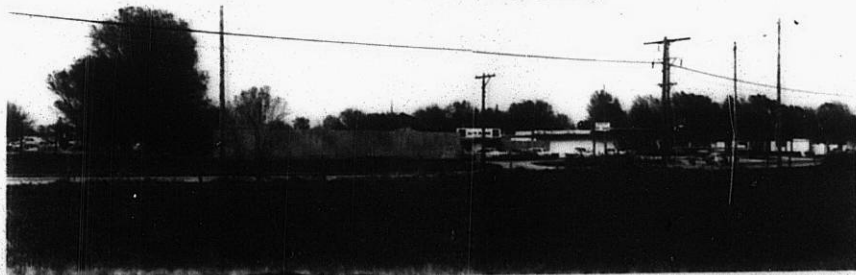


Z-1624

3.

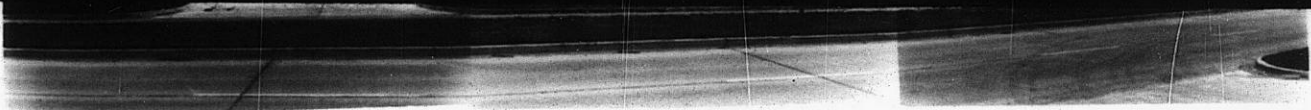


4.



157

X 52



2.

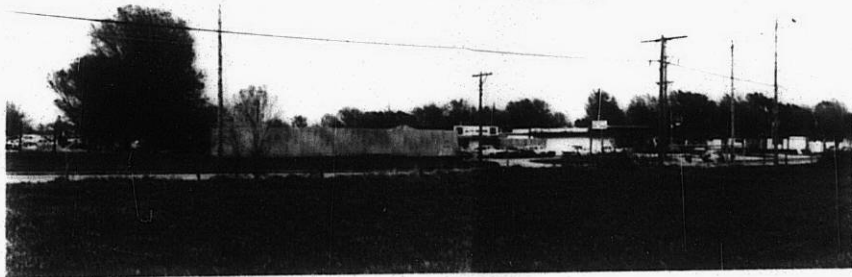


Z-1624

3.



4.



5.



STE

XTE