

NO. Z-1629 6247 "LC" to "C"
Desc. Northeast corner Kellogg and Ellson

By Larnard E. Smith
DOA BODY ACTION
5-23-74 MAPC app subject to replatting
6-11-74 BCC approved as recommended

file discarded 2-9-82

Ordinance No. 83-903 Published 8-5-75 (T9-201)

Z-1629

110

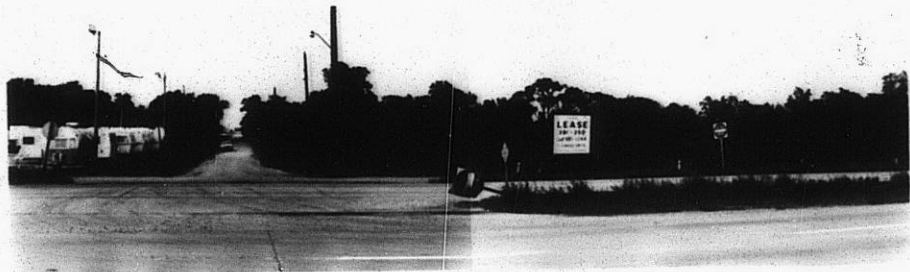
110

Z-1629

1.



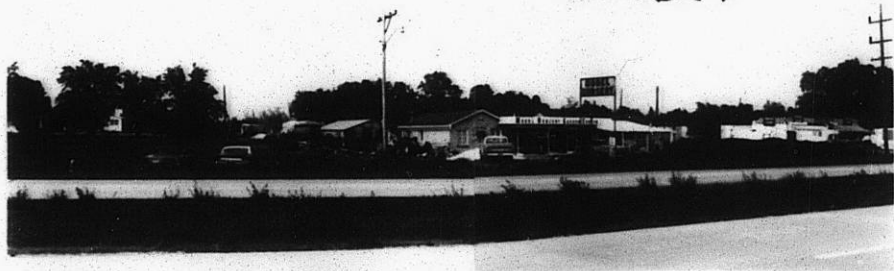
2.



3.



4.



Z-1629

310

XBE

3.



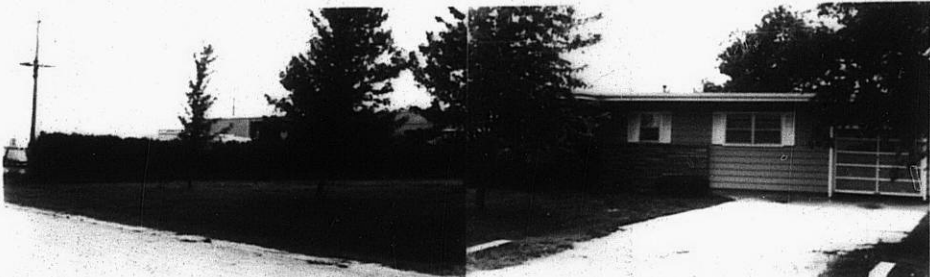
4.



5.



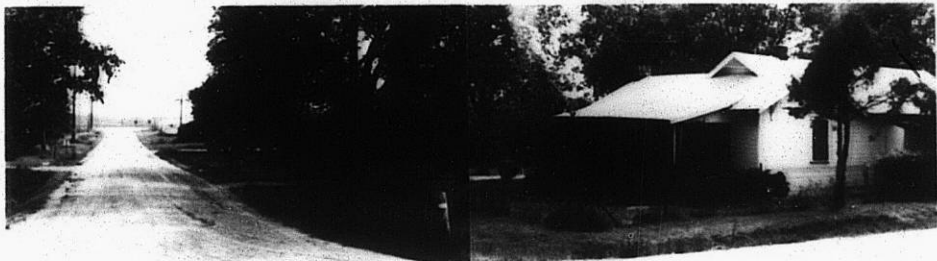
6.



7.



8.



STE

X 3E