

NO. Z-1630 "AA" to "G"

Desc. East side of Clifton in an area north of
the Kansas Turnpike

By Frederick Volz by Bob Nelson

| DOA | BODY | ACTION |
|---------|--------|---|
| 5-23-74 | MAPC | App. subject to platting |
| 6-11-74 | BCC | returned to mapc |
| 6-27-74 | mapc | App. subject to platting plus other conditions |
| 7-16-74 | B.C.C. | denied |
| 7-23-74 | B.C.C. | Denied |

Ordinance No. file discarded 2-9-82 Published _____ (T9-201)

Z-1631

319

347

Z-1631

1.



2.



3.



4.



5.

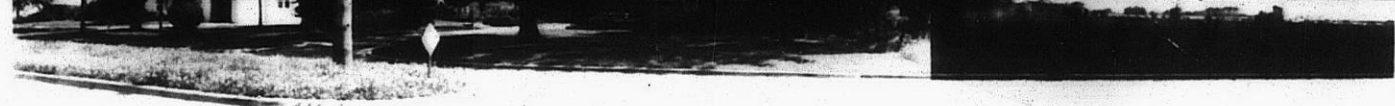


Z-1631

319

34X

4.



7

5.

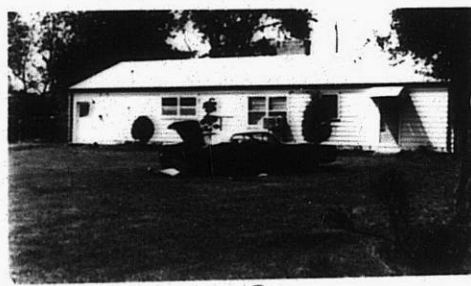
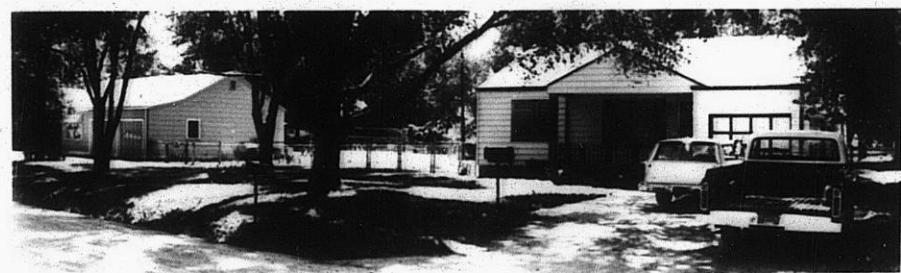


Z-1631

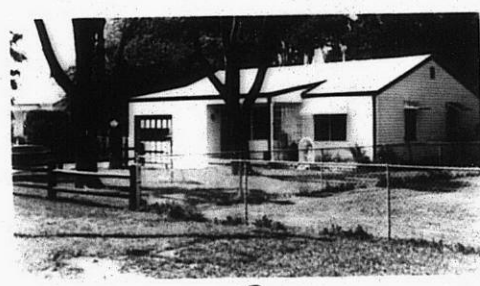
6.



7.



8.



9.



10.

34

34x

NO. 2-1631

"AA" to "C"

Desc. Southeast corner of Sunflower and MacArthur Rd.

By Marjorie Kessler by Glenn Beazley

DOA BODY ACTION

5-23-74 MAPC

App. subject to platting

6-11-74 BCC

Approach recommended

1/15/76 DENIED & CLOSED — failure to complete
file discarded 2-9-76
Ordinance No. _____ Published 76 (79-201)

2-1631

37

37