

NO. 2-1635 "AA" & "IC" to "C" & "E"

Desc. East side of Broadway in an area  
north of 47th St South

By Malan Const. Co. et al. by Dan Glickman

DOA	BODY	ACTION
6-27-74	MAPC	<i>deferred</i>
7-11-74	<i>mapc</i>	<i>deferred</i>
7-25-74	<i>mapc</i>	<i>deferred</i>
8-8-74	<i>mapc</i>	<i>stricken from agenda</i>
<i>Case withdrawn</i>		
<i>file discarded 2-9-82</i>		

Ordinance No. \_\_\_\_\_ Published \_\_\_\_\_ (T9-201)

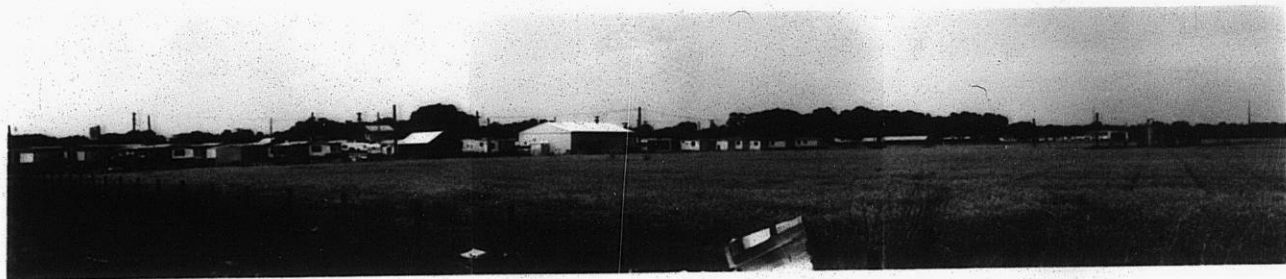
2-1635

13E

14E

Z 1635

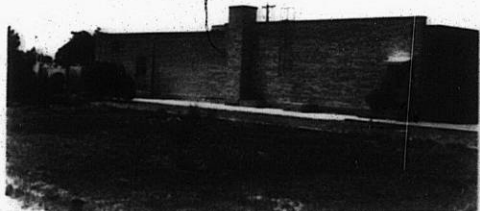
1.



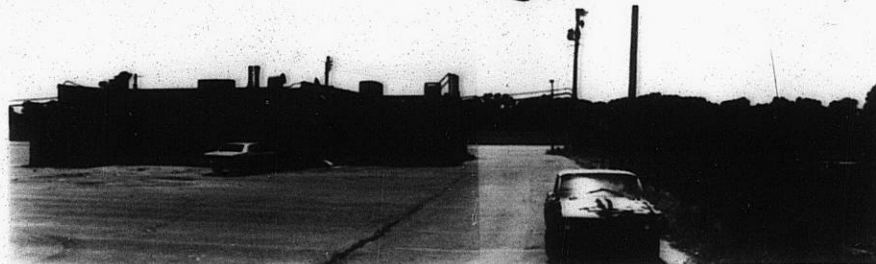
2.



3.



4.



5.

339

340



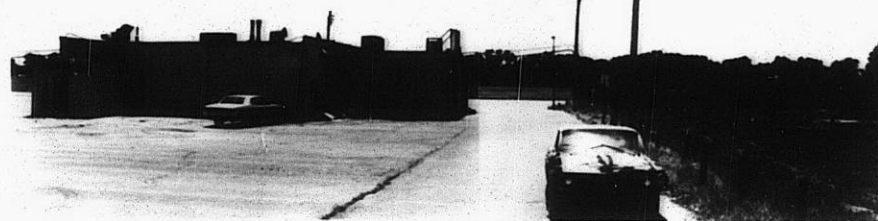
2.



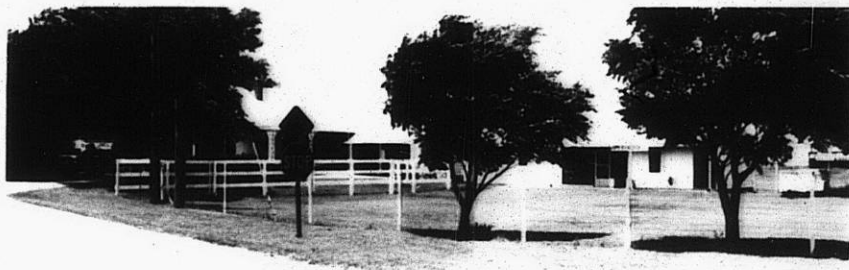
3.



4.

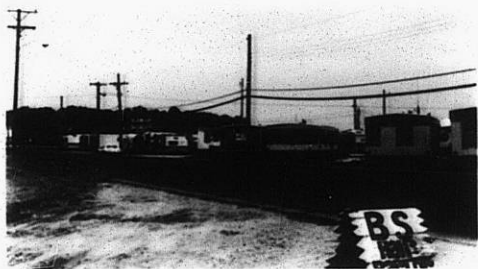


5.

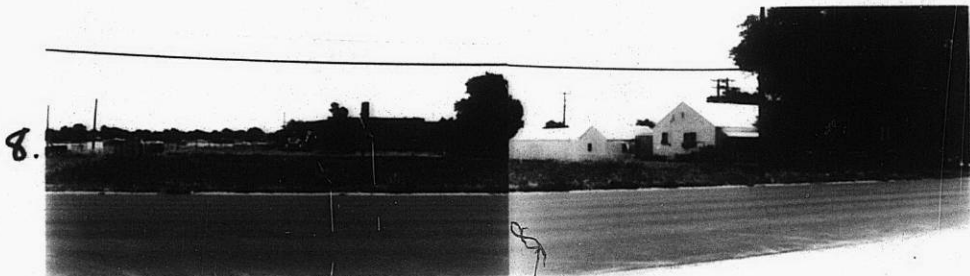


6.

Z-1635



7.

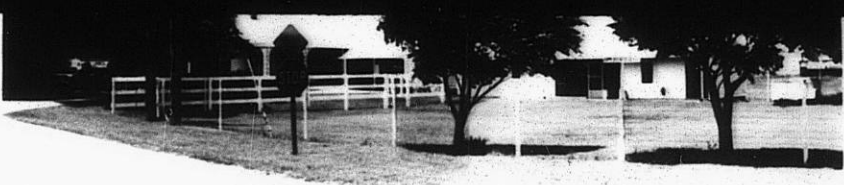


8.

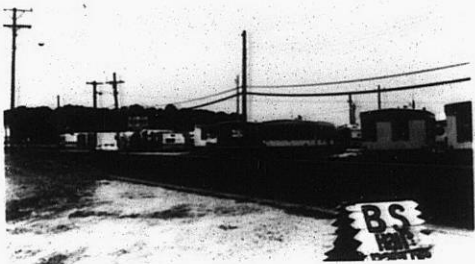
340

341

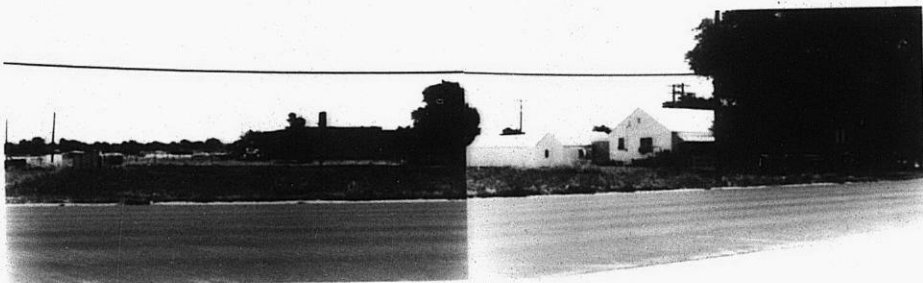
6.



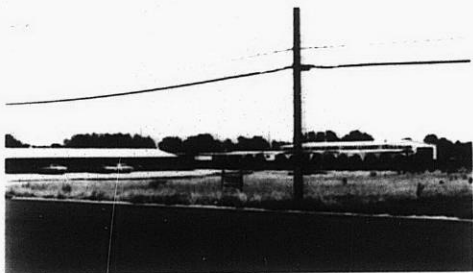
7.



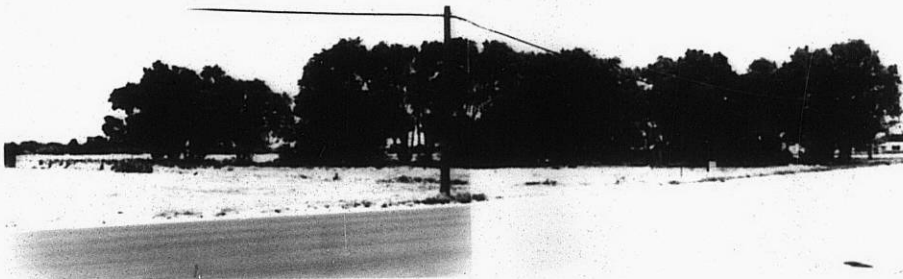
8.



9.

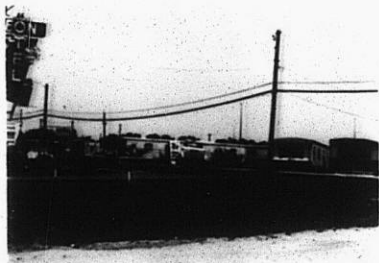


10.

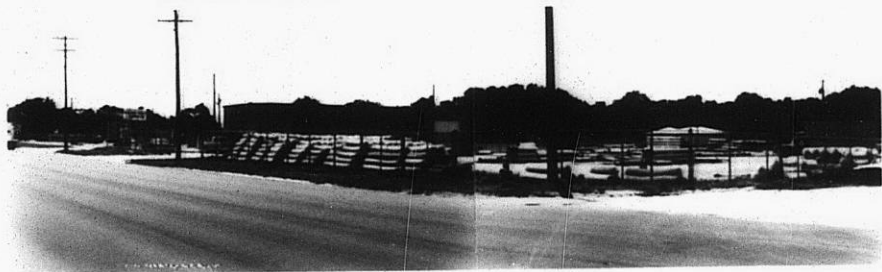


Z-1635

11.



12.



113

113