

NO. 2-1636 5350 "LC" to "C"

Desc. East side of Arkansas, in an area south of  
29th St. North

By Donald Vaughn

DOA	BODY	ACTION
<u>6-13-74</u>	<u>MAPC</u>	<u>Approved subject to platting</u>
<u>7-2-74</u>	<u>BCC</u>	<u>Approved as recommended</u>

file discarded 2-9-82

Ordinance No. 33629 Published 4-14-75 (T9-201)

2-1636

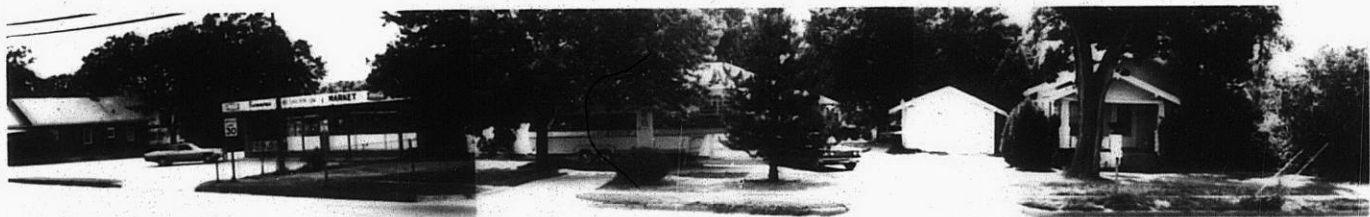
319

34x

Z-1636



1.



2.



3.



4.

Z-1636

X12

2.



3.



4.



Z-1636

5.



6.



7.



8.



313

313