

NO. Z-1639 5645 "AA" to "R-6"

Desc. Northeast corner of Grove and Pawnee

By Stan Chilton by Ernest McRae

DOA	BODY	ACTION
-----	------	--------

<u>6-27-74</u>	<u>MAPC</u>	<u>App subject to platting</u>
----------------	-------------	--------------------------------

<u>7-16-74</u>	<u>BCC</u>	<u>App not recommended</u>
----------------	------------	----------------------------

file discarded 2-9-82

Ordinance No. 54-133 Published 1-7-76 (T9-201)

Z-1639

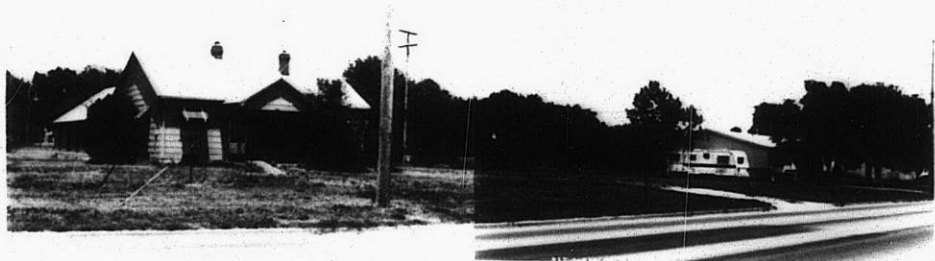
311

312

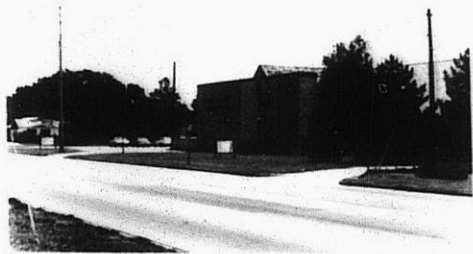
1.



2.

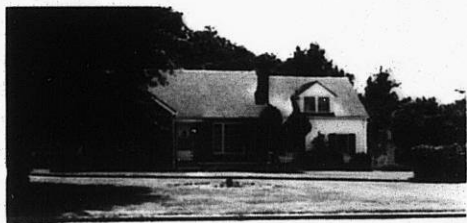


3.



Z-1639

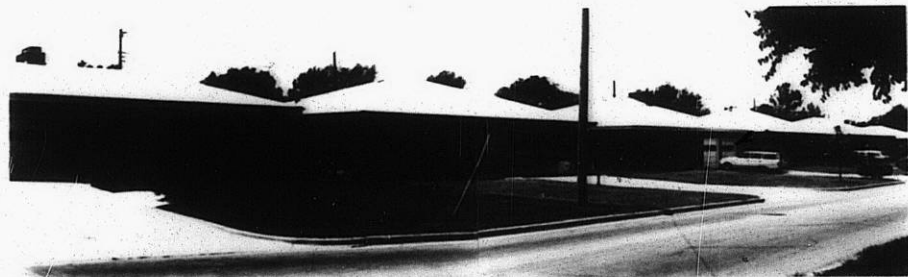
A.



5.



6.



7.



310

34x

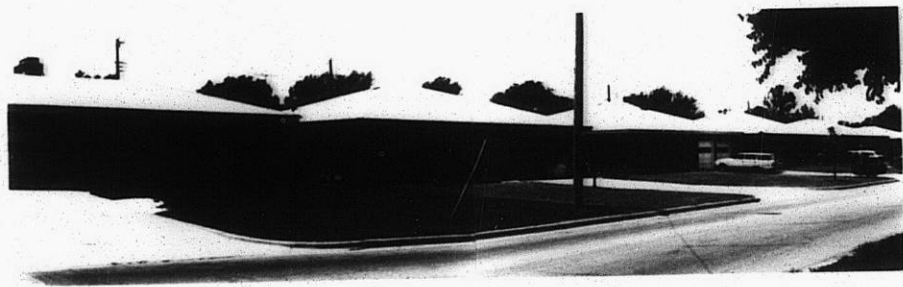
A.



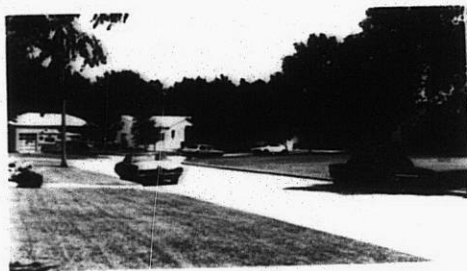
5.



6.



7.



8.



9.



10

11.



12.



Z-1639

57E

X5E