

NO. Z-1645 "LC" to "C"

Desc. Southwest corner of Kellogg Drive
and Courtleigh Drive

By Universal Service Stations, Inc. by
Everett Pettis, Attorney

DOA	BODY	ACTION
7-25-74	MAPC	<i>Approved</i>
8-13-74	BCC	<i>Approved</i>

file discarded 2-9-82

Ordinance No. 33-403 Published 8-23-74 (T9-201)

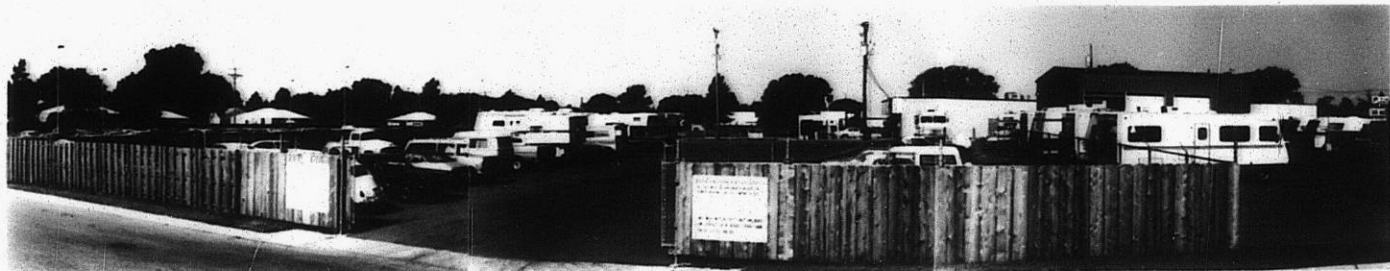
Z-1645

318

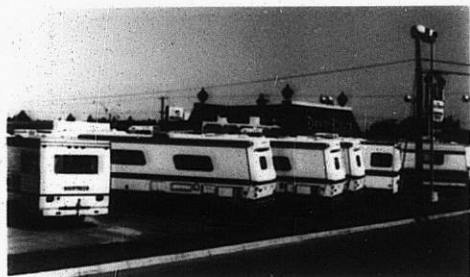
342

Z-1645

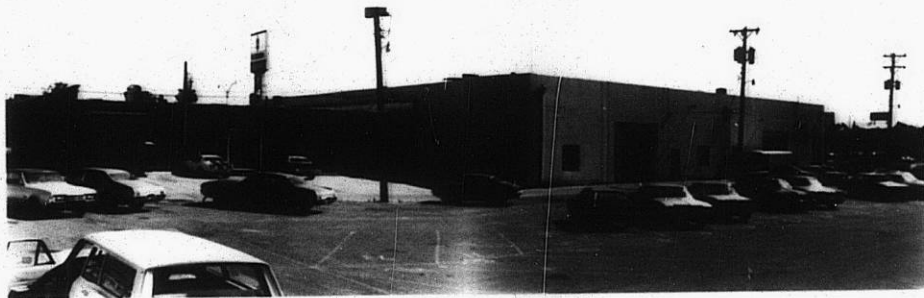
1.



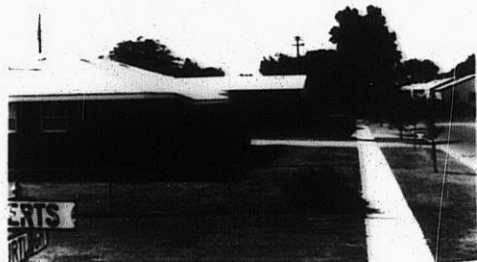
2.



3.



4.



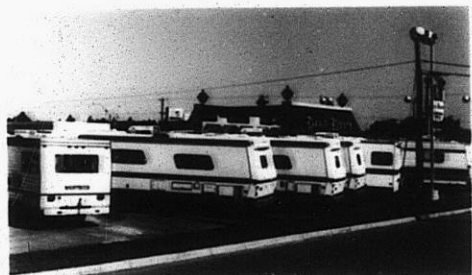
5.



34

34

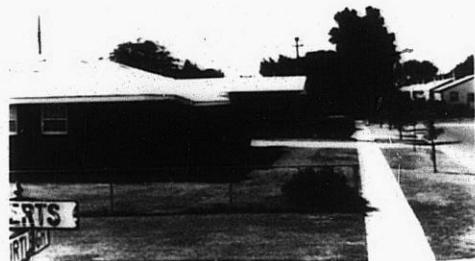
2.



3.



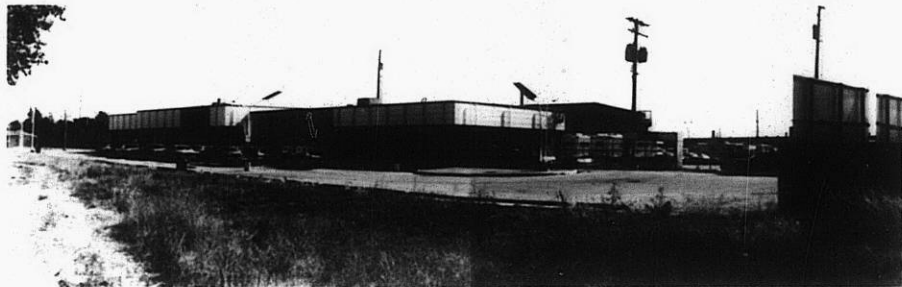
4.



5.



6.



Z-1645

310

X 310