

NO. Z-1647 6045 "AA" to "A"

Desc. Northeast corner of Pawnee
and Cherry Creek Drive

By Levitt Jewelry Co. Inc.

DOA BODY ACTION

7-25-74 MAPC Approved subject to recording
of the plat

8-13-74 BCC Approved

file discarded 2-9-82

Ordinance No. 33-936 Published 8-7-75 (T9-201)

Z-1647

STE

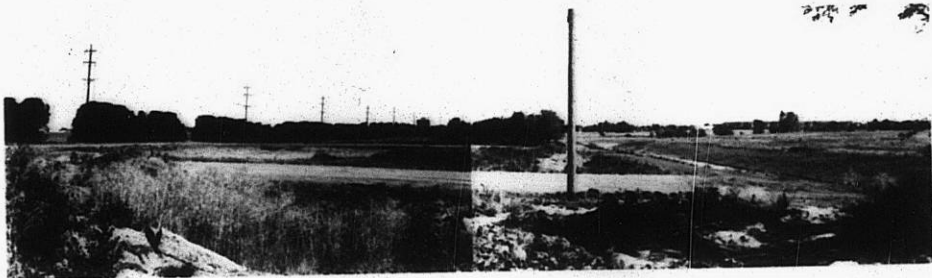
STE

Z-1647

1.



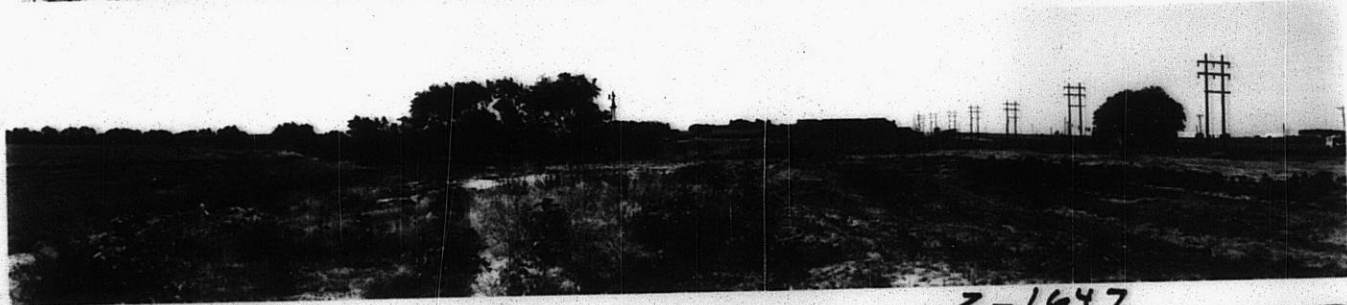
2.



3.



4.



Z-1647

329

34E



3.

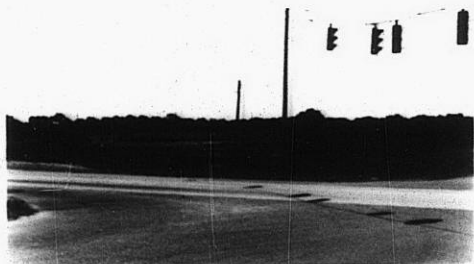


4.

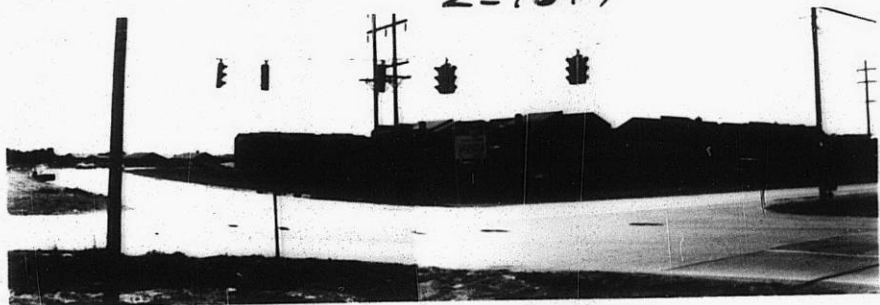


Z-1647

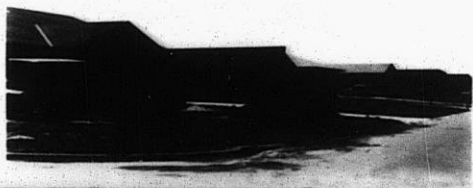
5.



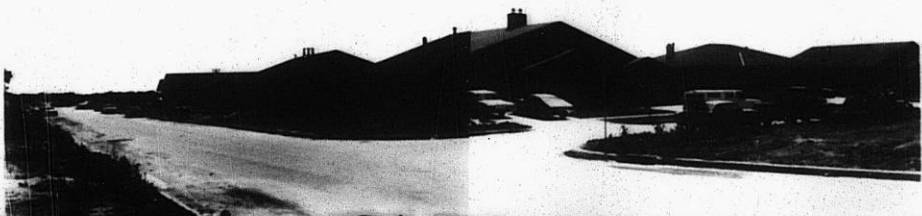
6.



7.



8.



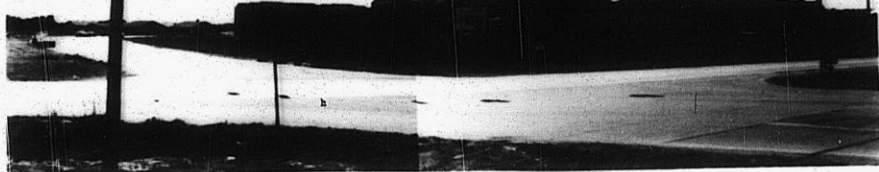
310

XFE

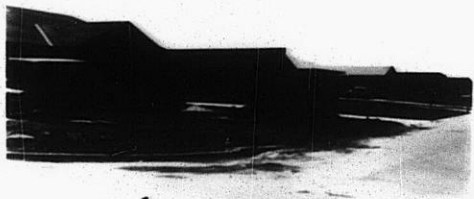
5.



6.



7.



8.



9.



Z-1647

10.



310

31X