

NO. 2-1648 6051 "AA" & "LC" to "E"

Desc. South of 37th St. North between Rock Rd. and Webb Road

By Wichita Land Company

DOA	BODY	ACTION
<u>8-8-74</u>	<u>MAPC</u>	<u>Approval</u>
<u>8-27-74</u>	<u>BCC</u>	<u>Approval</u>

file discarded 2-9-82

Ordinance No. 33-553 Published 12-13-74 (T9-201)
33-670 1-31-75

2-1648

11E

11E

Z-1648

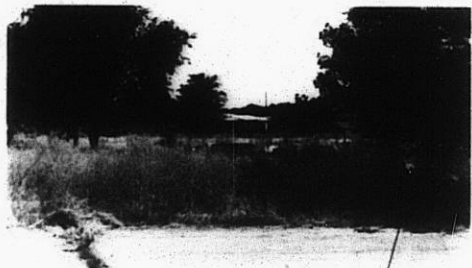
1.



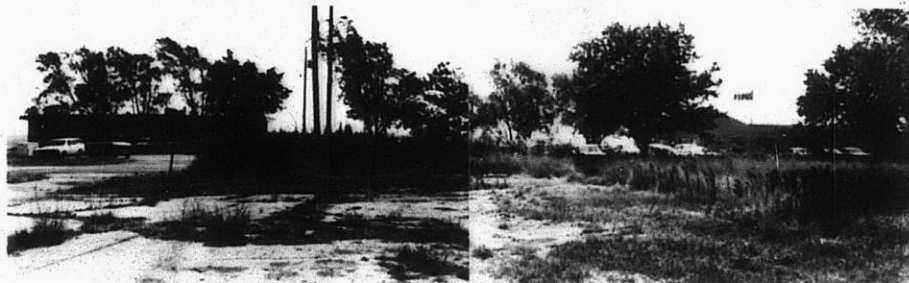
2.



3.



4.



5.



6.



7.



8.



151

X
34X

5.



6.



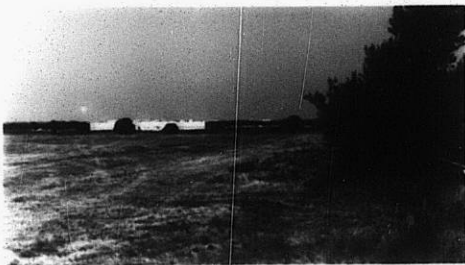
7.



8.



9.

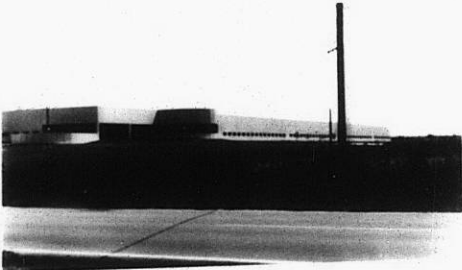


10. Z-1648



11.

12.



13.



319

34X