

NO. Z-1651 "A" to "BB"

Desc. Southwest corner of Erie & 17th St.

By John Ella Clark

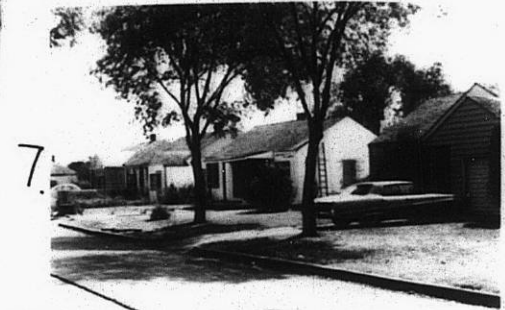
DOA	BODY	ACTION
8-8-74	MAPC	<i>denied</i>
<i>8-27-74</i>	<i>BCC</i>	<i>returned to maps</i>
<i>9-12-74</i>	<i>maps</i>	<i>denied</i>
<i>10-1-74</i>	<i>BCC</i>	<i>denied</i>

file discarded 2-9-82

Ordinance No. _____ Published _____ (T9-201)

Z-1651

152
152



Z-1651

300

XBE