

NO. 2-1657

"AA" to "LC"

Desc. Northeast corner Payne and 22nd St. North

By Cecil Merkel, et.al.

DOA	BODY	ACTION
9-12-74	MAPC	denied
10-1-74	BCC	returned to mapc
10-10-74	mapc	denied <sup>see Policy Statement adopted then</sup>
11-5-74	BCC	denied "LC" <sup>(date re: 21st No.)</sup> app. "R-5"
11-12-74	BCC	reapproved R-5 subject to <u>Revised and Closed platting</u>

Ordinance No.                      Published                      (T9-201)  
*file discarded 2-9-82*

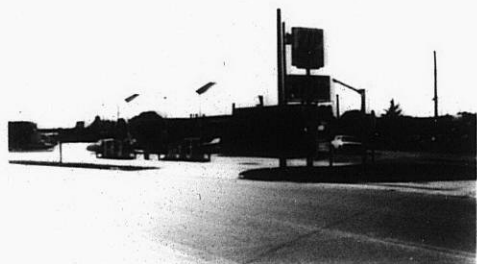
2-1657

131

131

Z-1657

1.



2.



3.

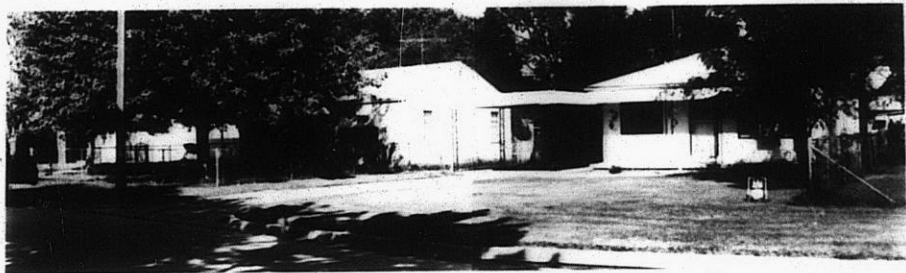


4.

5.



6.



57E

57E