

NO. Z-1668 6047 "AA" & "LC" to "BB"

Desc. South side of Douglas in an area west

of Webb Road

By Pizza Hut Corp. by Lindy Andeel

DOA BODY ACTION

11-14-74 MAPC App subject to platting

12.10.74 BCC App as recommended

file discarded 2-9-82

Ordinance No. 54-185 Published 3-1-76 (T9-201)

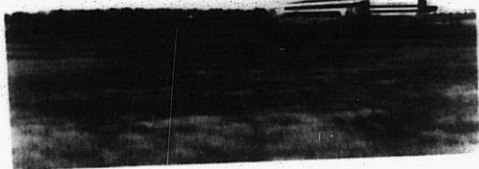
Z-1668

STE

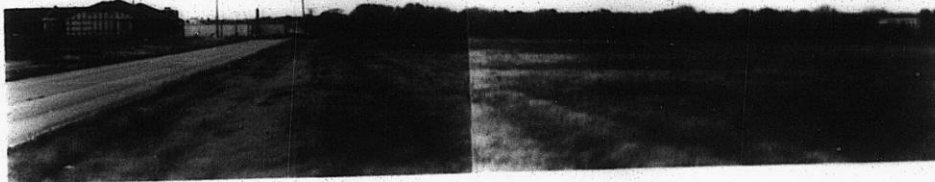
XTE

Z-1668

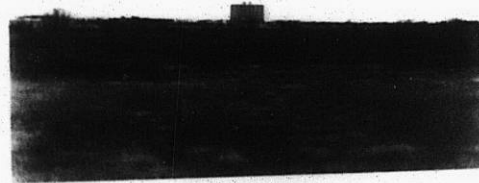
1.



2.



3.



4.



5.



6.



7.



319

319

3.



4.



5.



6.



7.



2-1668

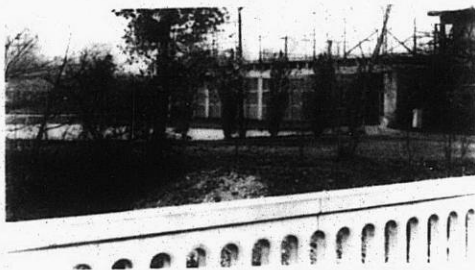
8.



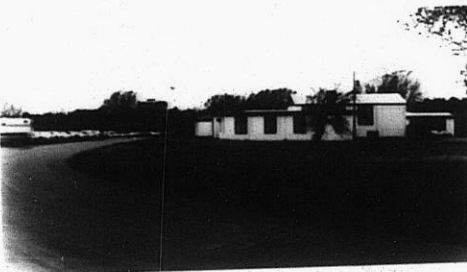
9.



10.



11.



12.



310

34X

8.

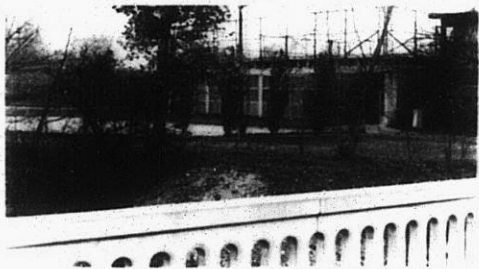


9.



7

10.



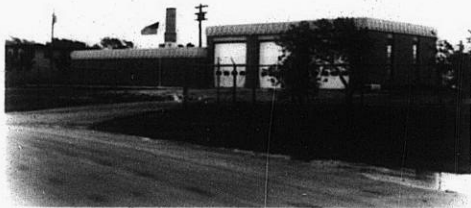
11.



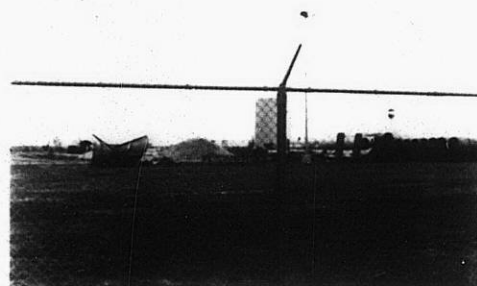
12.



13.



14. 2-1668



15



16.



17.



18.

STE

X 3E