

NO. Z-1669 5644 "AA" to "BB"

Desc. Southwest corner of Alpine and Hillside

By Thomas C. Buckley

DOA	BODY	ACTION
12-2-74	MAPC	<i>deferred</i>
<i>12-12-74</i>	<i>MAPC</i>	<i>Report for redrawing</i>
<i>1-9-75</i>	<i>MAPC</i>	<i>Approved, subject to conditions</i>
<i>1-28-75</i>	<i>BCC</i>	<i>Approved as recommended</i>

file discarded 2-9-82

Ordinance No. 33-679 Published 2-7-75 (T9-201)

Z-1669

319

122

Z-1669

1.



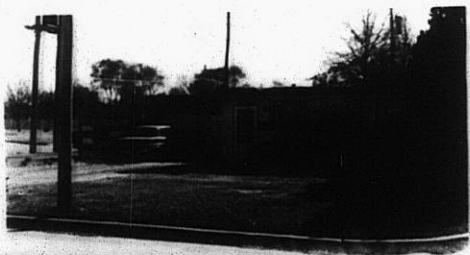
2.



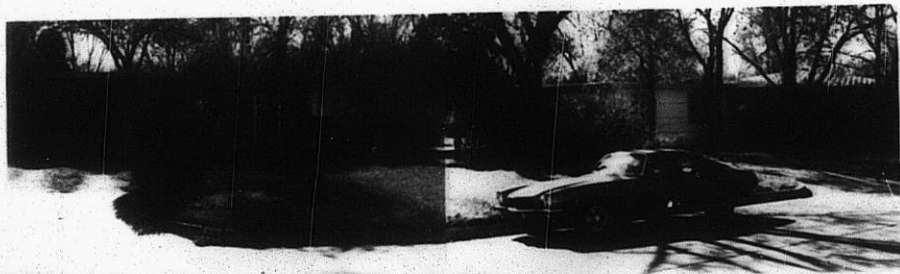
3.



4.



5.



35

35

4.



5.



6.



7.



8.



Z-1669

3E

3E