

NO. Z-1692 5343 "AA" to "A" & "C"

Desc. Southeast corner of 33rd St. South and  
Meridian

By Wayne R. Cain, et.al. by Grey Dresie

DOA BODY ACTION

4-10-75 MAPC Denial "C" Opp. "B" on entire tract

4-29-75 BCC Approved "A" as recommended

file discarded 2-9-82

closed

Ordinance No. 34-437 Published 6-17-76 (T9-201)

Z-1692

319

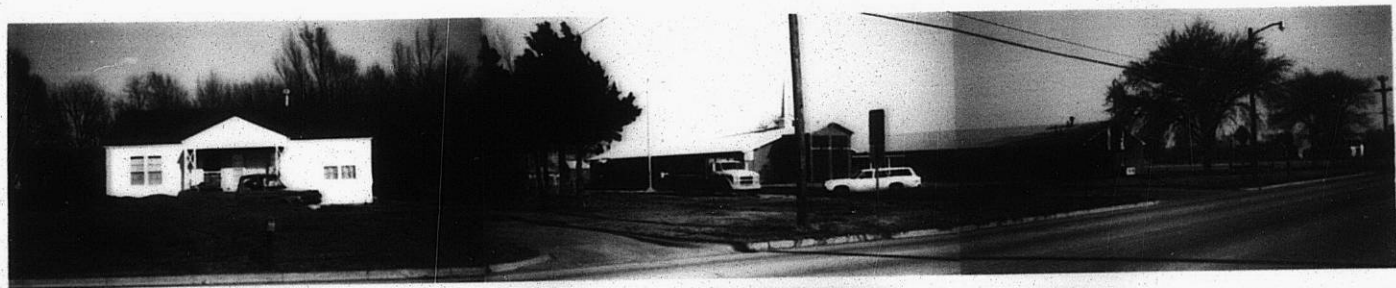
342

Z-1692

1.



2.



3.



4.



XBE

XBE

1.



2.



3.

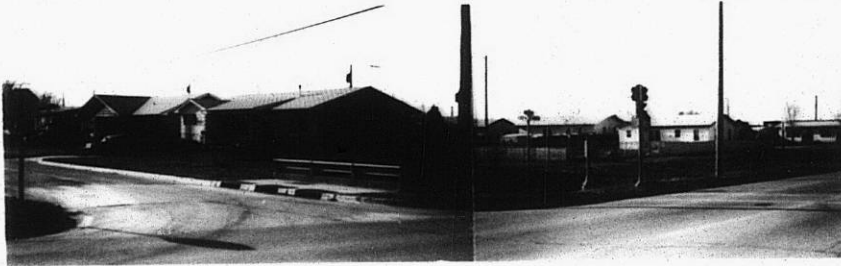


4.



2-1692

5.



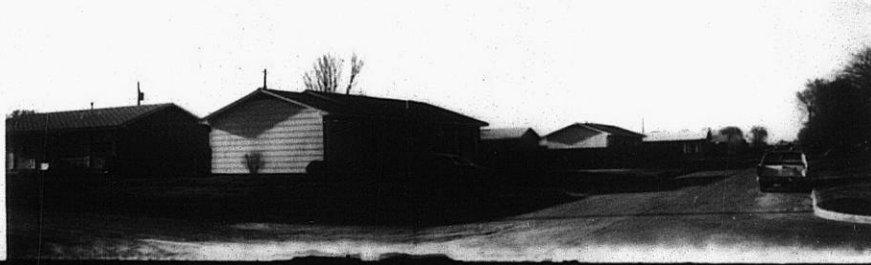
6.



7.



8.



113

X 113



7.



8.



Z-1693

9.



10.



11.



313

XBE