

NO. Z-1698 *Handbook* add "LC" & "BB" to "R-6"

Desc. Northeast corner Crawford and Elizabeth

By Phil Ruffin by Joe Martin

DOA	BODY	ACTION
4-24-75	MAPC	<i>App. subject to platting</i>
5-13-75	BCC	<i>Refer 1 week</i>
5-20-75	BCC	<i>Refer back to map c</i>
6-12-75	map c	<i>App. subj to platting</i>
7-1-75	BCC	<i>App R 6 on recommendation</i>

*Desired and closed* *Failure to complete plat.*  
Ordinance No.                      Published                      (T9-201)  
*file discarded 2-9-82*

Z-1698

STE

XFE

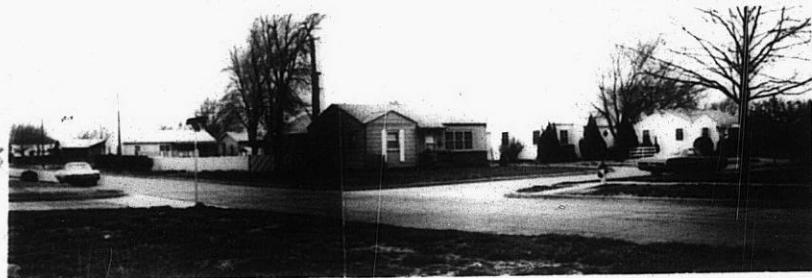
Z-1698



1.



2.



3.



4.



5.

6.

Z-1698

6



5.

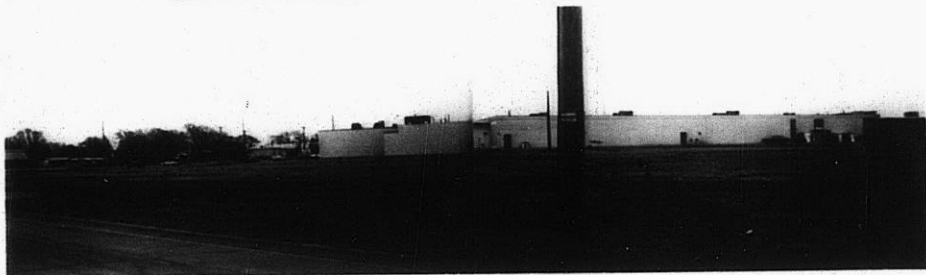


6.

Z-1698



7.



8.



9.

310

34X