

NO. Z-1708 "B" to "C"

Desc. South side of 26th St. between Market
and Park Place

By Wichita White Truck Sales by Geo. McCarthy

DOA BODY ACTION

6-12-75 MAPC defered at applicants request

6-26-75 MAPC Approved subject to replatting

7-15-75 B.C.C. Reper on Mc.

Denial and closed. Failure to plat.

file discarded 2-9-82

Ordinance No. _____ Published _____ (T9-201)

Z-1708

311

311

Z-1708

1.



2.

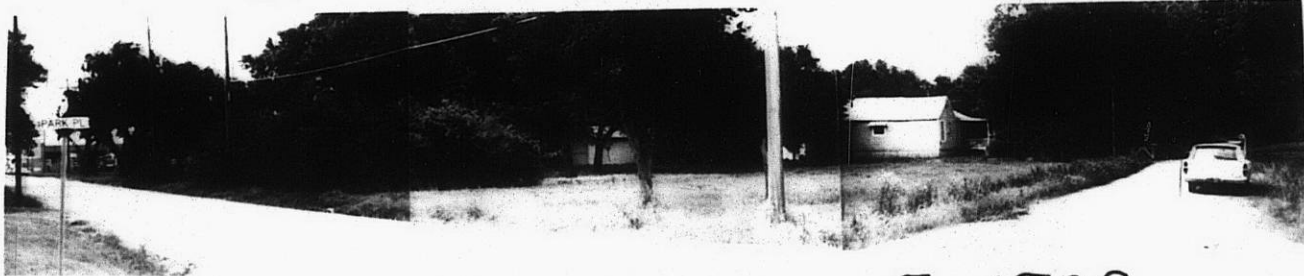


3.



4.

5.



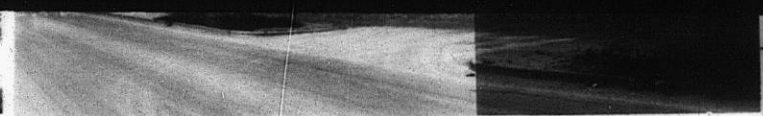
Z-1708

310

34X



3.



4.



5.

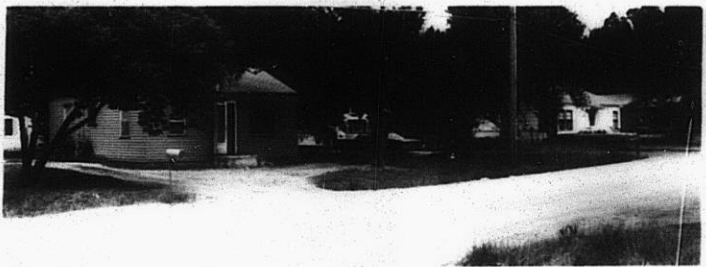
Z-1708



6.



7.



8.

13E

14E