

NO. Z-1716 5743 "E" to "B"

Desc. East side of Bluff between Navajo Lane and  
Kansas Turnpike.

By John Poston

DOA BODY ACTION

7-24-75 MAPC App subject to sidewalk

8-19-75 BCC Approved.

closed

file discarded 2-9-82

Ordinance No. 33-999 Published 8-29-75 (T9-201)

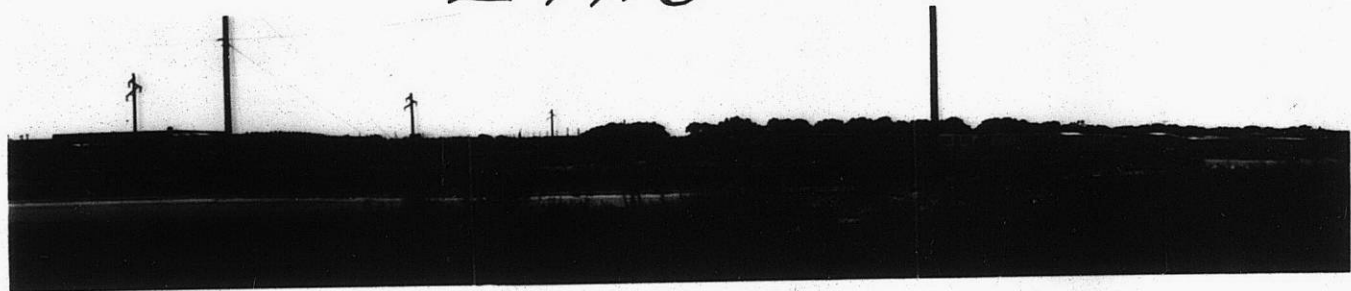
Z-1716

318

342

2-1716

1.



2.



3.



4.



1716

1716