

NO. Z-1720 *accession* "AA" to "E" (5343)

Desc. West side of Seneca in an area north of I-235

and south of the Little Arkansas River

By R. J. Foster by Eugene G. Coombs

DOA	BODY	ACTION
7-24-75	MAPC	<i>App subject to platting</i>
<i>8-19-75</i>	<i>BCC</i>	<i>Approved</i>

file discarded *closed*
2-9-82

Ordinance No. 34-953 Published 3-29-77 (T9-201)

Z-1720

319

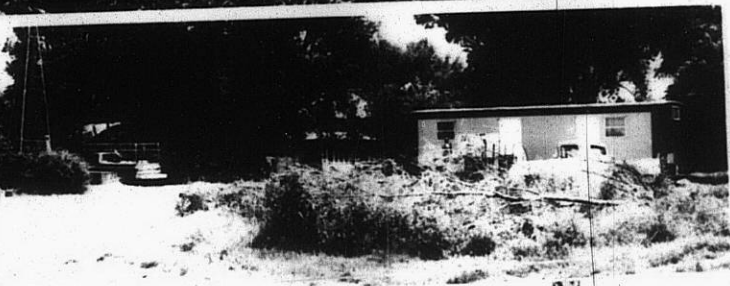
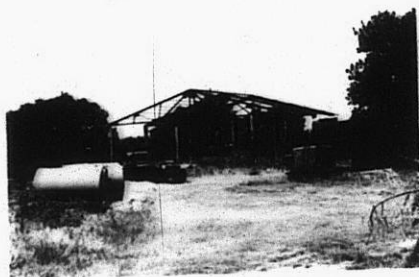
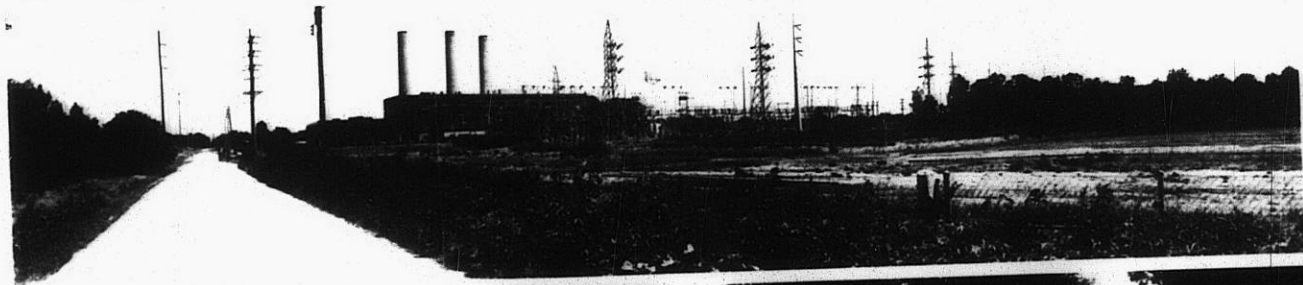
34x

Z-1720

1.



2.



3.

310

34X