

NO. Z-1724 "A" to "BB"

Desc. West side of Edgemoor in an area south of

Kellogg

By Burris & Phyllis Crawford by Everett C. Pettis

DOA	BODY	ACTION
8-14-75	MAPC	referred 2 wks
8-28-75	MAPC	denied
9-16-75	BCC	denied

file discarded 2-9-82 closed

Ordinance No. _____ Published _____ (T9-201)

Z-1724

101
101

Z-1724

1.



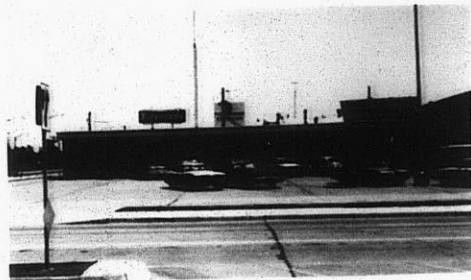
2.



3.



4.



310

XBE