

NO. Z-1725 5945 "AA" to "C"

Desc. Northeast corner of Mt. Vernon and Woodlawn

By Gene M. Campbell, et.al.

DOA	BODY	ACTION
8-28-75	MAPC	approved sub. to platting
9-16-75	Bec	approved as-rec.

file discarded 2-9-82

Associated with DP-74

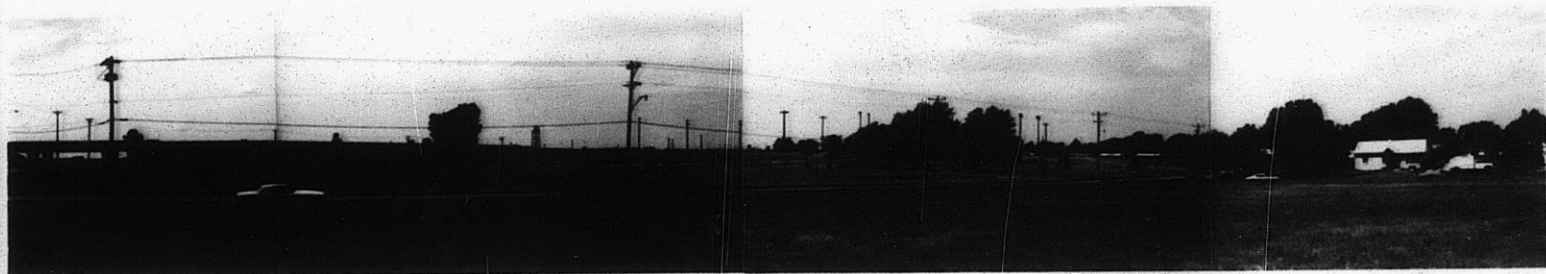
Ordinance No. 34-070 Published 10-17-75 (T9-201)

2-1725

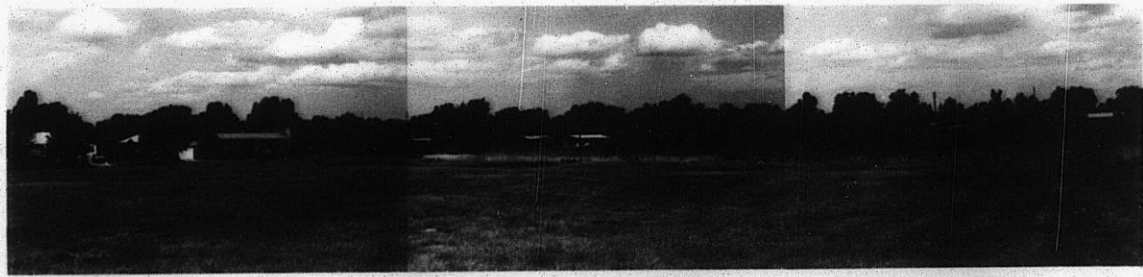
ITE

ITE

2-1725



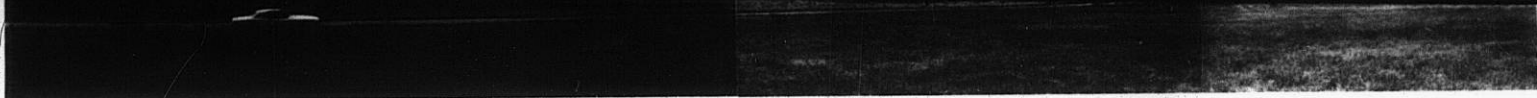
1.



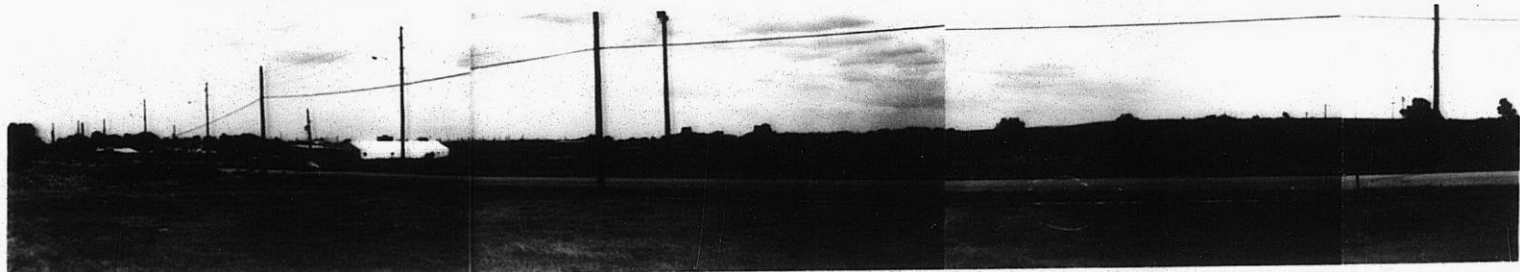
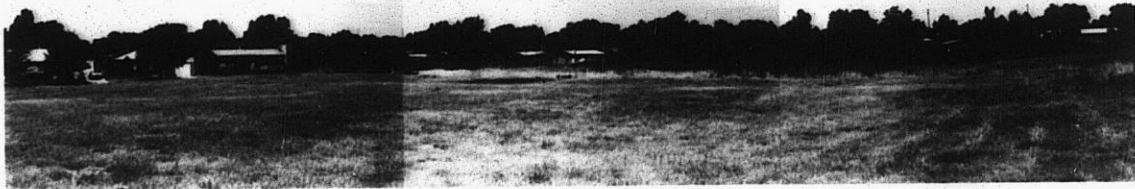
2.

XBE

1.



2.



3.

Z-1725

4.



310

34X