

NO. Z-1729 "AA" to "A"

Desc. West side of Perry in an area north  
of 32nd St. North

By Jay Sanborn by John Bachman

DOA	BODY	ACTION
8-28-75	MAPC	<i>withdrawn by applicant</i>

*file discarded 2-9-82*  
*Case Closed*

Ordinance No. \_\_\_\_\_ Published \_\_\_\_\_ (T9-201)

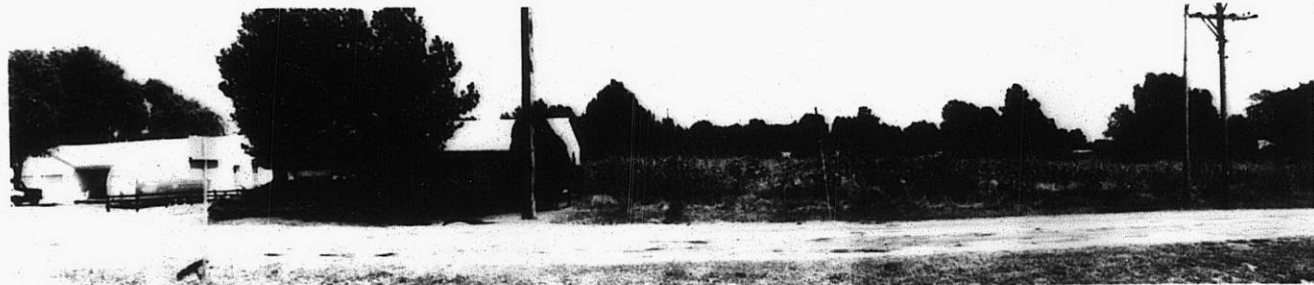
Z-1729

310

XBE

Z-1729

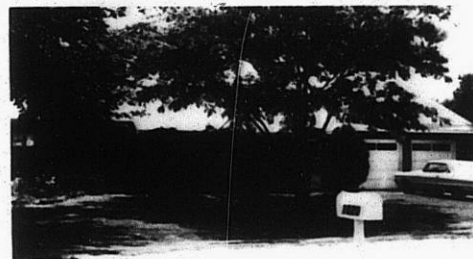
1



2.



3.



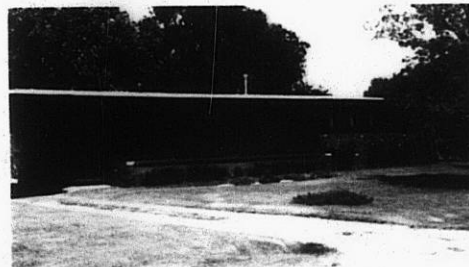
4.



5.



6.



7.

Z-1729

135

XBE

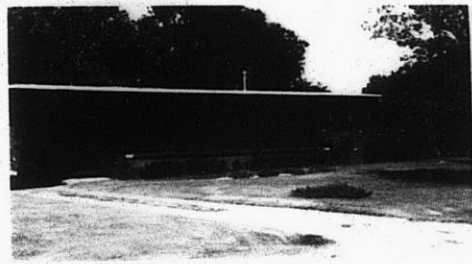
2.



3.



4.



5.



6.

Z-1729

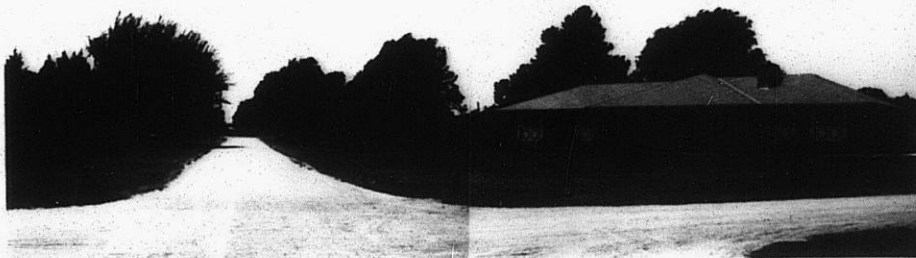
7.



9.



10.



113

113