

NO. Z-1754 *Party over* "B" & "LC" to "C"
need to close

Desc. Between Hydraulic and Kansas in an area south
of Kellogg.

By Raymond E. & Winona L. Walton

DOA BODY ACTION

11-13-75 MAPC *app. c on Hydraulic,*
deny c on Kansas.

12-9-75 Dec. *Return to Mapc*

1-8-76 Mapc *app. c in pair and lots facing Hydraulic;*
allowing 400' is denied c on Kansas, all

1-27-76 Dec. *sub. to respondents*
app. as Dec.

Closed - see Case No. Z-1886

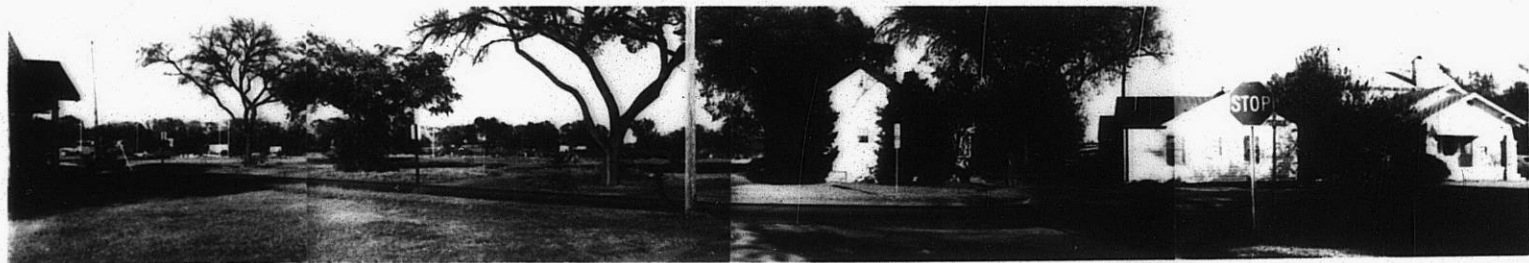
Change No. *file discarded* Published *2-9-82* (T9-201)

2-1754

311

34X

Z-1754

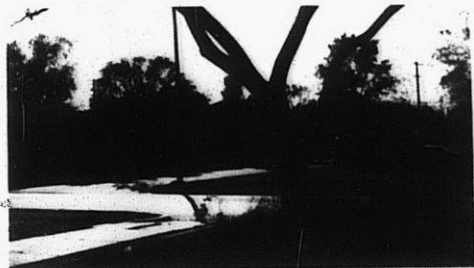


1.

2.



3.

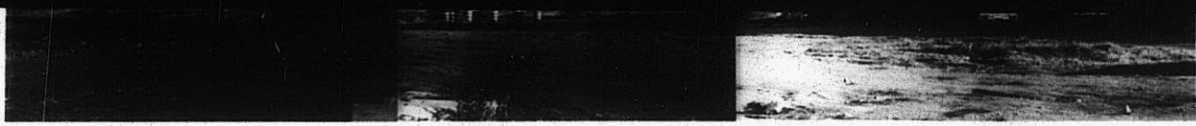


4.

Z-1754

319

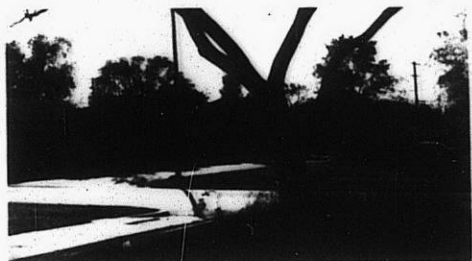
34x



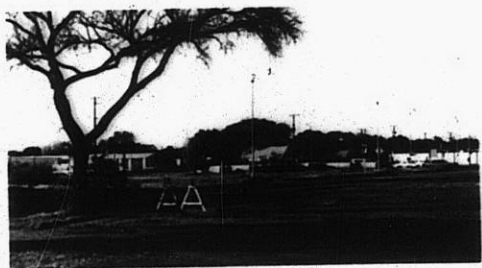
3.



4.



2-1754



5.

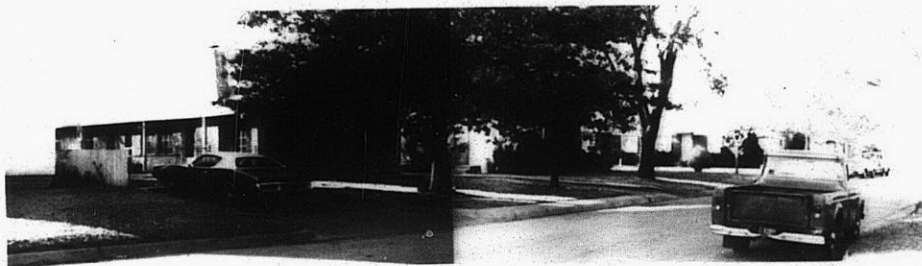


6.



7.

8.



3E

3E