

NO. Z-1758 5746 "B" to "TC"

Desc. Northeast corner of Harry and Terrace Drive.

By Ralsco, Inc. (Richard Ralls)
DOA BODY ACTION

12-1-75 MAPC approved sub to replatting
~~12-23-75~~ Bcc Return to MAPC for re consideration
of Residential Classification

1-8-76 MAPC app. sub to replatting

1-27-76 Bcc App. as per

file discarded 2-9-82 closed

Ordinance No. 34-546 Published 9-20-76 (T9-201)

Z-1758

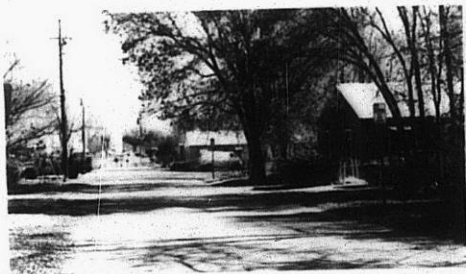
310

XBE

Z-1758



1.



2.



3.



A.

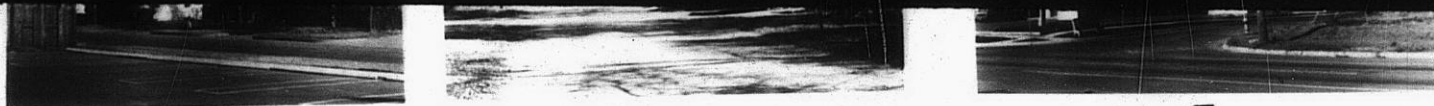
Z-1758



5.

310

34x

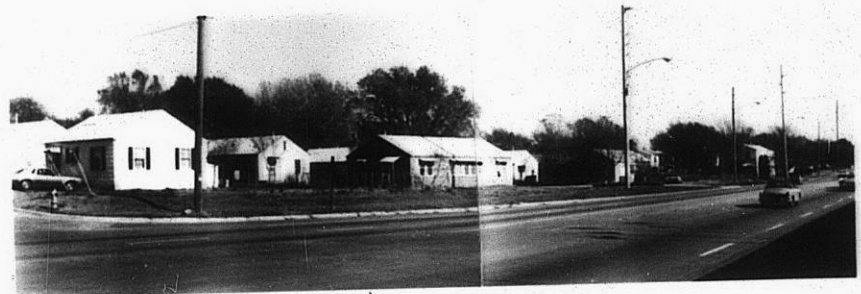


1.

2.

3.

A.

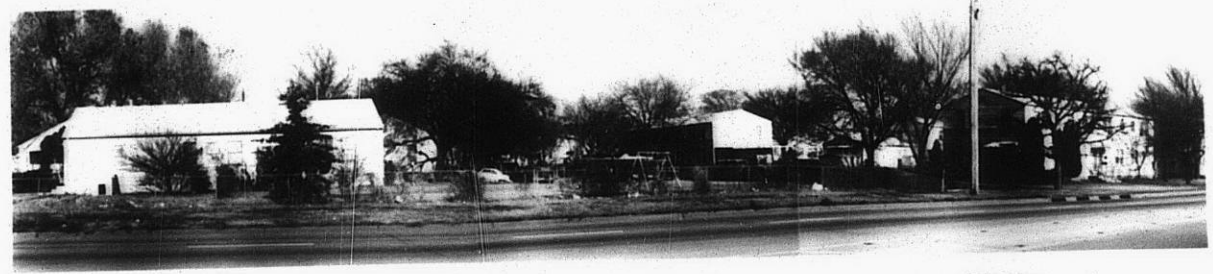


Z-1758

5.



6.



3E

X 3E