

LANDSCAPE NOTES

- 1. The Contractor shall field verify the actual locations, bury depths and sizes of all existing utilities prior to commencing landscape and seeding activities. They shall contact the Kansas One-Call system a minimum of two full business days prior to work to request marking of utilities by the respective utility owners. They shall directly contact any utility owners not subscribing to the One-Call system.

PLANTING NOTES

- 1. All work shall be done in accordance with these Landscape Specifications and Local Industry Standards.
- 2. Shrubs with broken leaders will not be accepted.
- 3. Topsoil hauled onto site shall be fertile, friable, natural loam topsoil, of uniform quality characteristic of representative local soils which produce heavy growth of crops, grass, or other vegetation. It shall be free of subsoil, clay lumps, brush, weeds, roots, stones, trash, or other matter toxic to plant growth.

IRRIGATION NOTES

- 1. The Contractor shall field verify the actual locations, bury depths and sizes of all existing utilities prior to commencing irrigation installation. He shall contact the Kansas One-Call system a minimum of two full business days prior to work to request marking of utilities by the respective utility owners. He shall directly contact any utility owners not subscribing to the One-Call system.
- 2. The Contractor shall immediately advise the Owner and/or Architect of any utility locations which may adversely impact irrigation improvements shown on these drawings.

LEGAL DESCRIPTION

Parcel A: A tract of land lying with the north 125.00 feet of Lot 4, Block A, Fossil Rim Commercial, Wichita, Sedgwick County, Kansas as prepared by Baughman Company, P.A., State of Kansas, County of Sedgwick, more particularly described as beginning at the northeast corner of Lot 4, Block A in said Fossil Rim Commercial; thence S00D0'26"E coincident with the east line of said Lot 4, 125.02 feet to a point 125.00 feet normally distant south of the north line of said Lot 4; thence S89D11'18"W parallel with the north line of said Lot 4, 113.95 feet; thence S80D30'47"W parallel with the north line of said Lot 4, 101.13 feet; thence S89D23'31"W parallel with the north line of said Lot 4, 48.28 feet to a point in the west line of said Lot 4 and to a point 125.00 feet normally distant south of the north line of said Lot 4; thence N00D0'00"W coincident with the west line of said Lot 4, 125.02 feet to the northwest corner of said Lot 4; thence N89D12'31"E coincident with the north line of said Lot 4, 34.87 feet to a deflection point in the north line of said Lot 4; thence N80D30'47"E coincident with the north line of said Lot 4, 101.15 feet to a deflection point in the north line of said Lot 4; thence N89D31'18"E coincident with the north line of said Lot 4, 125.33 feet to the point of beginning.

CONTROL

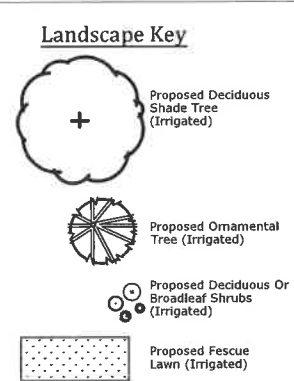
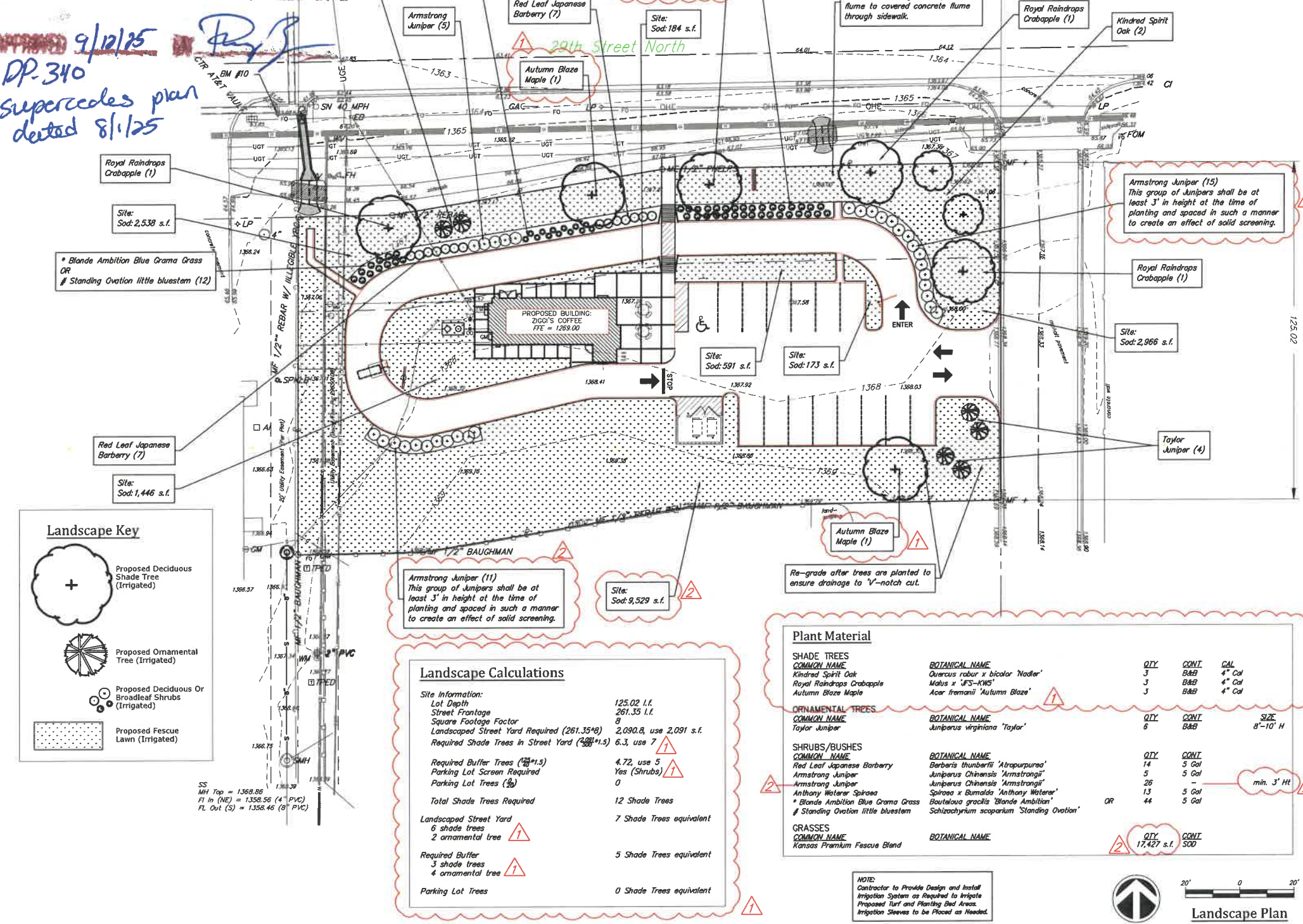
Horizontal Control: Basis of Bearing for this survey is a platted bearing of N00°-00'-00"W along the west line of Parcel A, Lot 4, Block A, Fossil Rim Commercial, Wichita, Sedgwick County, Kansas. Vertical Control: BM #10: Chiseled square "□" on the SW corner of curb inlet near the NW corner of Project and just east of North Gas Station entrance. Elevation: 1,362.99 (NAVD 88) N: 5205.30 E: 4918.90

UTILITY & EMERGENCY CONTACT INFORMATION

Table with columns for Utility Type, Provider Name, and Contact Information. Includes Electric (383-8650), Water (City of Wichita Water Department), Sanitary Sewer (City of Wichita Sewer Maintenance), Storm Sewer (City of Wichita Storm Sewer Maint.), Gas (Kansas Gas Service, Black Hills Energy), Communications (AT&T, Cox Communications), and Emergency (Police Department, Fire Department, Ambulance).

LANDSCAPE PLAN

APPROVED 9/12/25 DP-340 Supercedes plan dated 8/1/25



Landscape Calculations table with columns for Site Information, Required Buffer, Landscaped Street Yard, and Parking Lot Trees. Includes calculations for lot depth, street frontage, and required shade trees.

Plant Material table with columns for Shade Trees, Ornamental Trees, Shrubs/Bushes, and Grasses. Lists common names, botanical names, quantities, and container sizes.

NOTE: Contractor to Provide Design and Install Irrigation System as Required to Irrigate Proposed Turf and Planting Bed Areas. Irrigation Sleeves to be Placed as Needed.



ZIGGI'S 8669 W 29th Street N Wichita, Kansas 67205

Revisions: Added 1.5x trees 07/17/25 MWS CUP Adjustment Requirements 08/11/25 MWS

Date: 05-2025 SE Project No: 25.2.0014 Drawn By: MS Checked By: MS

Sheet Name: Landscape Plan Sheet No: L1.0