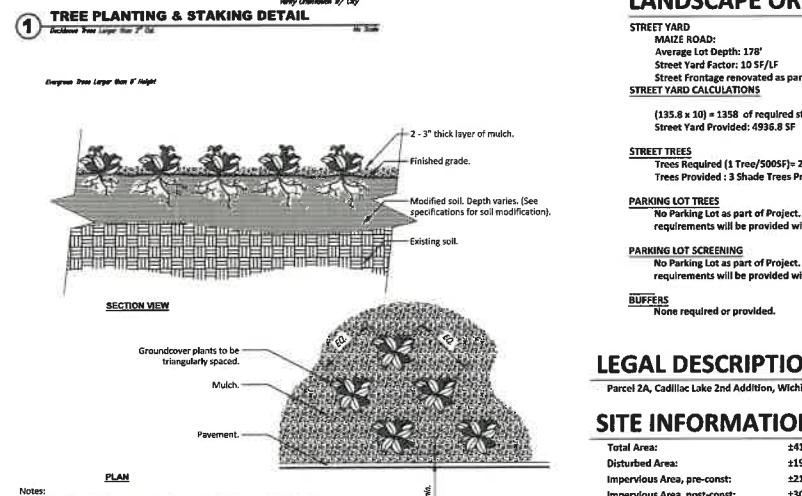
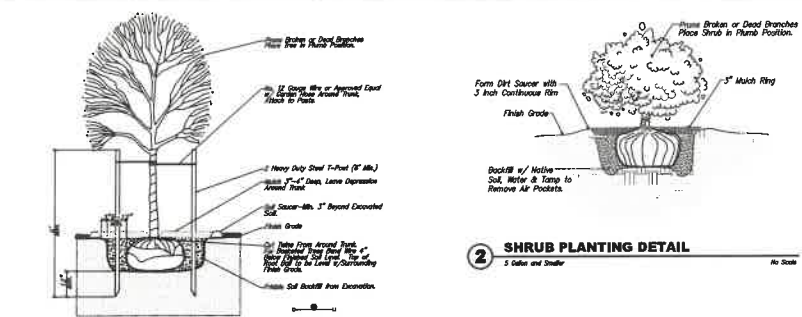
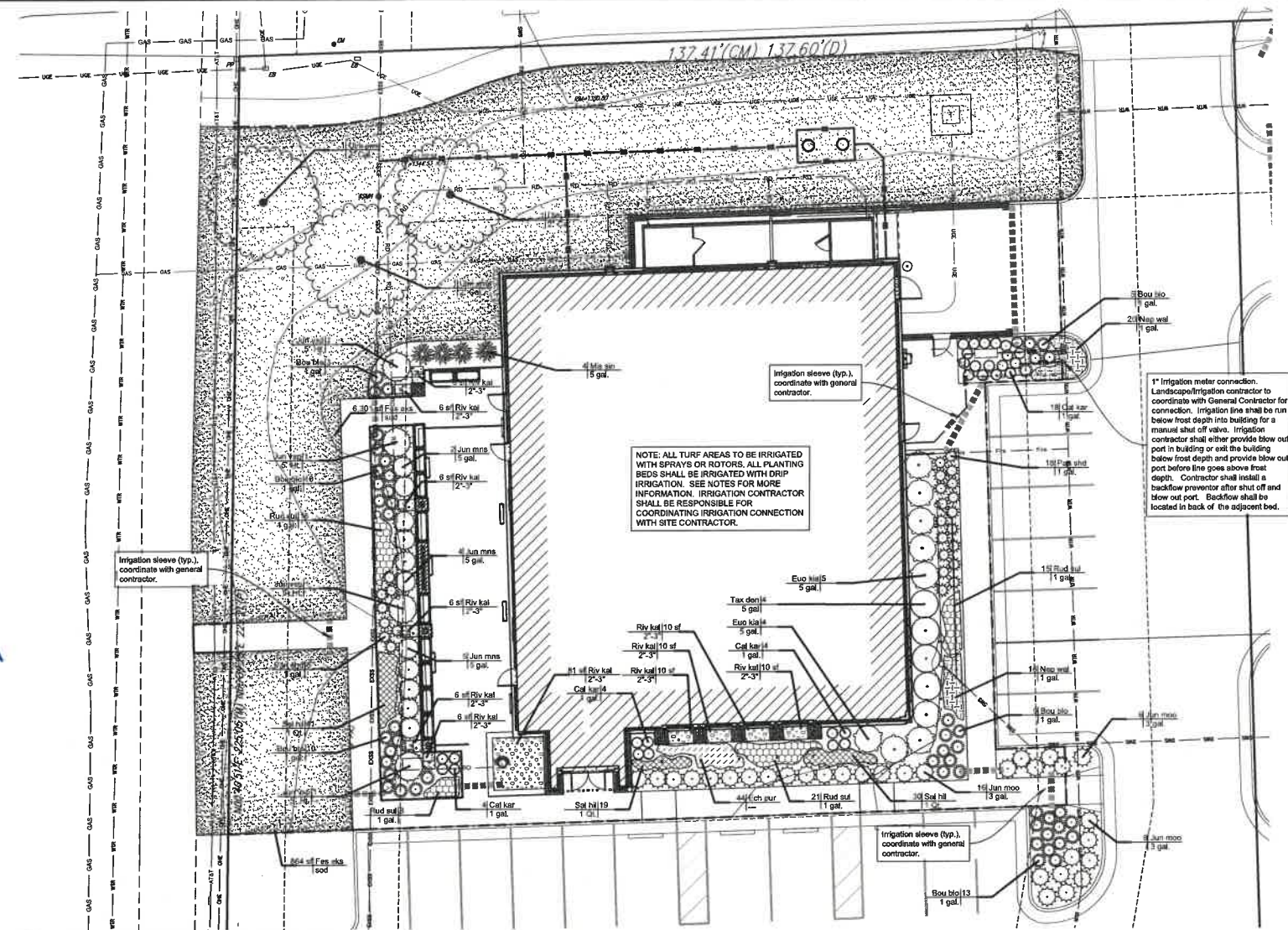


LANDSCAPE PLAN

APPROVED 12/15/24 BY R.J. DP-336



- Notes:
- See planting legend for groundcover species, size, and spacing dimension.
 - Small roots (1/2" or less) that grow around, up, or down the root ball periphery are considered a normal condition in container production and are acceptable; however, they should be eliminated at the time of planting. Roots on the periphery can be removed at the time of planting. (See root ball shaving container detail).
 - Settle soil around root ball of each groundcover prior to mulching.

LEGEND

Existing Utilities		Proposed Utilities	
USE	ONE	USE	ONE
WTR	WTR	WTR	WTR
GAS	GAS	GAS	GAS
PPR	PPR	PPR	PPR
SW	SW	SW	SW
SS	SS	SS	SS
AT&T	AT&T	AT&T	AT&T
QWV	QWV	QWV	QWV
USE	ONE	USE	ONE
WTR	WTR	WTR	WTR
GAS	GAS	GAS	GAS
PPR	PPR	PPR	PPR
SW	SW	SW	SW
SS	SS	SS	SS
AT&T	AT&T	AT&T	AT&T
QWV	QWV	QWV	QWV

- LANDSCAPE NOTES**
- All landscape work shall be done in accordance with industry standards.
 - All areas called out as seeded shall be seeded at 2.5 to 3 lbs per 1,000 sq ft and fertilized at 40 lbs per acre.
 - Trees with broken leaders or no central leader will not be accepted.
 - All planting beds shall be prepared by killing all existing vegetation with Round-Up (or equal) according to label directions. A Pre-emergent herbicide such as Treflan (5%) (or equal) shall be applied per label directions. All planting beds to receive 2" organic matter (such as cotton bur mulch, compost, or humus) and shall be rototilled to a depth of 10-12".
 - Mulch all planting beds with min. 3" of mulch. Mulch all tree saucer wells with min. 3" of mulch. Mulch material to be premium cedar mulch of uniform consistency.
 - Metal edging shall be used to separate all turf areas from planting beds. Edging shall be 10 gauge thickness, commercial grade, or approved equal.
 - General Contractor to supply and place at a depth of 4", all topsoil on site within the Limits of Construction.
 - Topsoil hauled onto site shall be fertile, friable, natural loam topsoil, of uniform quality characteristic of representative local soils which produce healthy growth of crops, grass, or other vegetation. It shall be free of trash, or other matter toxic to plant growth.
 - Topsoil shall be delivered in an unfrozen and non-muddy condition and shall be subject to approval by the Landscape Architect.
 - Prior to any excavation for landscaping purposes the location of underground utilities shall be determined by calling Kansas One Call at 877-247-344-7233. Contractor shall be responsible for any damage done to existing utilities.
 - Report any discrepancies in the planting plan to the Landscape Architect, prior to starting construction.
 - The Landscape Contractor shall coordinate with the G.C. to gain site access to install the plants and maintain grounds, until final acceptance from owner. Upon final acceptance, the one (1) year guarantee period will begin.
 - The Landscape Contractor shall coordinate with the G.C. to install the plants and maintain grounds, until final acceptance from owner.
 - The Landscape Contractor shall submit bid with unit prices for all plants, including mulch, installation, 1 year guarantee, bed preparation, fertilizer, etc.
 - The Landscape Contractor is responsible for any damage done to the exterior of the building or any part of the parking lot when installing or maintaining the plantings before final acceptance.
 - Fall planting season shall be September 1 thru October 31. Spring planting season shall be April 1 thru June 30. For grass seeding, fall season shall be September 1 thru mid October. Spring season for seeding shall be from March 15 thru mid May.
 - Landscape to be watered manually. If automatic system is requested by owner, contractor to consult irrigation notes below.

SYMBOL	CODE	BOTANICAL / COMMON NAME	SIZE	CONTAINER	QTY
TREES					
Jun vap		JUNIPERUS VIRGINIANA 'SPARTAN' / SPARTAN EASTERN RED CEDAR	5" HT.	B&B	4
Ulm amo		ULMUS PARVIFOLIA 'EMER II' / ALLEE LACEBARK ELM	2" CAL.	B&B	3
SHRUBS					
Euo klo		EUONYMUS KALTSCHOWICUS 'MANHATTAN' / MANHATTAN EUONYMUS	5 GAL.	POT	9
Jun moo		JUNIPERUS SABINA 'MONARD' / MOOR-DENSE JUNIPER	3 GAL.	POT	31
Jun mns		JUNIPERUS X PRYTERIANA 'MONSIEUR' / SEA OF GOLD PRYZTER JUNIPER	5 GAL.	POT	11
Tax dca		TAXUS X MEDIA 'DENSIFORMIS' / DENSE ANGLE-JAPANESE YEW	5 GAL.	POT	4
ORNAMENTAL GRASSES					
Bou blo		BOUTELOUJA GRACILIS 'BLONDE AMBITION' / BLONDE AMBITION BLUE GRAMA	1 GAL.	POT	50
Cal har		CALAMAGROSTIS X ACUTIFLORA 'KARL FOERSTER' / KARL FOERSTER FEATHER REED GRASS	1 GAL.	POT	30
Mis sh		MISCANTHUS SINEENSIS 'ADAGIO' / ADAGIO BULMIA GRASS	3 GAL.	POT	4
Pan shd		PANICUM VIRGATUM 'SHENANDOAH' / SHENANDOAH SWITCH GRASS	1 GAL.	POT	29
GROUND COVERS					
Ech pur		ECHINACEA PURPUREA / CONEFLOWER	---	12" o.a.	44
Map wd		HEPETA X FRASSINI 'WALKER'S LOW' / WALKER'S LOW CATMINT	1 GAL.	POT	36
Rud sal		RUDEBEDIA FLUIDA 'LITTLE GOLDSTAR' / LITTLE GOLDSTAR CONEFLOWER	1 GAL.	POT	30
Sal hill		SALVIA NEMOROSA 'BLUE HILL' / BLUE HILL MEADOW SAGE	1 QT.	POT	80
ROCK MULCH					
Riv ind		RIVER ROCK COLORADO 2"-3" / RIVER ROCK INSTALL TO A MINIMUM DEPTH OF 3" OVER 4 OZ. NONWOVEN LANDSCAPE FABRIC	2"-3"		157 SF
SOD/SEED					
Fes aka		FESTUCA X KANSAS PREMIUM BLEND / KANSAS PREMIUM BLEND	SOD		7,160 SF

