

RECOMMENDATION FROM MAPC TO BOARD OF CITY COMMISSIONERS

V-1232 - VACATION OF A PORTION OF A UTILITY EASEMENT ON LOT 13, BLOCK 5, ECHO HILLS,
LOCATED ON THE EAST SIDE OF CHAMBERS IN AN AREA SOUTH OF 16TH STREET NORTH.

The Planning Commission recommends approval subject to:

- A. Any relocation or reconstruction of utilities necessitated by this vacation shall be at the sole expense of the applicant.
- B. All proceedings shall be without cost to the City, County, or any utility company.

Bayouth moved, Gardner seconded and it carried unanimously. Chisholm was absent. Crockett and Moore not yet present. (12-1-83)

ACTION: Approve the vacation request as recommended by the Metropolitan Area Planning Commission and place the ordinance on first reading.

VACATION CASE DATA

Legal Description: Commencing at the southwest corner of Lot 13, Block 5, Echo Hills, An Addition to Wichita, Sedgwick County Kansas; thence S63°50'E along the southerly line of said Lot 13, 38 feet; thence N26°10'E, 6 feet for a place of beginning; thence S63°50' E, 8.5 feet; thence N26°10'E, 4 feet; thence N63°50'W, 8.5 feet; thence S26°10'W, 4 feet to the place of beginning;

General Location: East side of Chambers in an area south of 16th Street North

Applicant: J & O Construction Company
602 W. 25th Street South
Wichita, Kansas 67217

Protestors (If any): None

98266) (Published in The Daily Record December 23, 1983)

ORDINANCE NO. 38-609

AN ORDINANCE VACATING A PORTION OF A UTILITY
EASEMENT ON LOT 13, BLOCK 5, ECHO HILLS, AN
ADDITION TO WICHITA, SEDGWICK COUNTY, KANSAS.

BE IT ORDAINED BY THE GOVERNING BODY OF THE
CITY OF WICHITA, KANSAS:

SECTION 1. That the portion of utility easement described
as follows, to-wit:

Commencing at the southwest corner of Lot 13, Block
5, Echo Hills, An Addition to Wichita, Sedgwick County,
Kansas; thence S63°50'E along the southerly line of
said Lot 13, 38 feet; thence N26°10'E, 6 feet for a
place of beginning; thence S63°50' E, 8.5 feet; thence
N26°10'E, 4 feet; thence N63°50'W, 8.5 feet; thence
S26°10'W, 4 feet to the place of beginning; (MAPC
NO. V-1232);

be and the same is hereby vacated in accordance with K.S.A. 13-443,
subject, however, to the concurrence in such vacation by the Board
of County Commissioners as by law provided.

SECTION 2. That it is hereby recommended to the Board of
County Commissioners of Sedgwick County, Kansas, that said above
described easement be vacated by said Board in case a proper petition is
filed under the provisions of K.S.A. 12-504, 12-505 and K.S.A.
12-506.

SECTION 3. That this Ordinance shall be in force and
take effect from and after its passage and publication once in
the official city paper.

PASSED AND APPROVED at Wichita, Kansas this 20th
day of December, 1983.

ATTEST:

Margalee Wright, Mayor

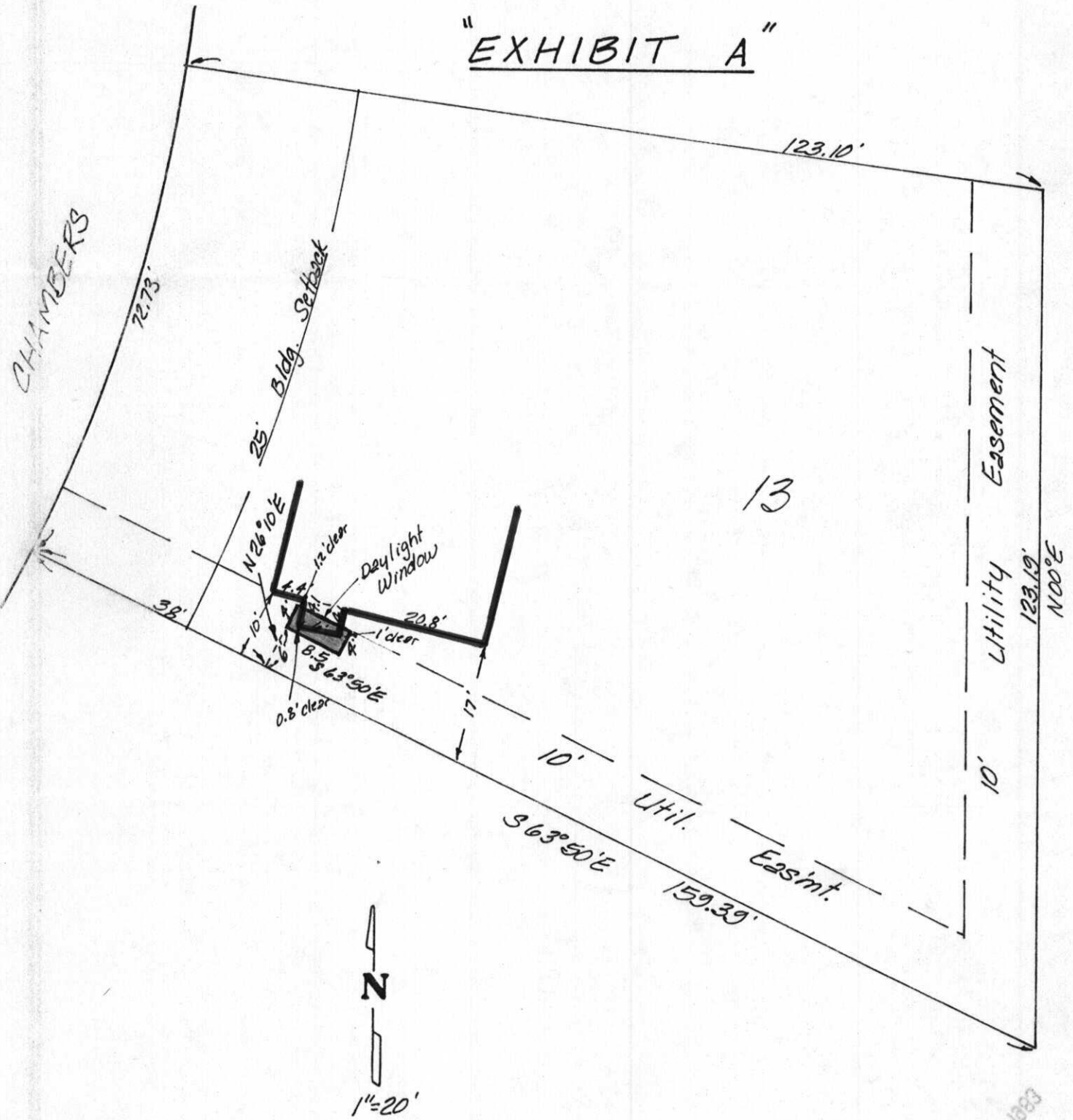
Donald C. Gisick, City Clerk

(SEAL)

WILLIAM L. KORBER, L.S.
JOHN E. LUNDBLADE, L.S.
N. BRENT WOOTEN, P.E.

BAUGHMAN COMPANY, P.A.
SURVEYING & ENGINEERING
316 262-7271 • 330 LAURA • WICHITA, KANSAS 67211

"EXHIBIT A"



1101 5 1983
Oct. 27, 1983