

RECOMMENDATION FROM MAPC TO BOARD OF CITY COMMISSIONERS

V-1203 - VACATION OF PORTIONS OF THE UTILITY EASEMENTS ON LOTS 23 AND 24, BLOCK 2, CLASSEN PARKED ADDITION TO SEDGWICK COUNTY, KANSAS.

The Planning Commission recommends approval subject to:

1. Any relocation or reconstruction of utilities necessitated by this vacation shall be at the sole expense of the applicant.
2. All proceedings shall be without cost to the City, County, or any utility company.

Gardner moved, Goebel seconded and it carried unanimously. Chisholm and Hansen were absent. Moore not yet present. One vacancy. (7-28-83)

ACTION:

Approve the vacation request as recommended by the Metropolitan Area Planning Commission and place the ordinance on first reading.

VACATION CASE DATA

Legal Description: All the easement platted on the rear of Lot 23, Block 2, Classen Parked Addition to Sedgwick County, Kansas, which is east of a line connecting a point on the north lot line 120 feet east of the northwest lot corner with a point on the south lot line 120 feet east of the southwest lot corner; AND

All the easement platted on the rear of Lot 24, Block 2, Classen Parked Addition to Sedgwick County, Kansas, which is east of a line connecting a point on the north lot line 120 feet east of the northwest lot corner with a point on the south lot line 120 feet east of the southwest lot corner.

General Location: east of Classen in an area north of Wassall.

Applicants: William B. Manning	LeRoy A. Bollig
2752 Classen, 67216	2756 Classen, 67216

Protestors (If any): None

Attachments: Vacation Ordinance

(97843) (Published in The Daily Record SEPT. 2, 1983)

ORDINANCE NO. 38-496

AN ORDINANCE VACATING PORTIONS OF THE UTILITY EASEMENTS ON LOTS 23 AND 24, BLOCK 2, CLASSEN PARKED ADDITION TO SEDGWICK COUNTY, KANSAS.

BE IT ORDAINED BY THE GOVERNING BODY OF THE CITY OF WICHITA, KANSAS:

SECTION 1. That the utility easements described as follows, to-wit:

All the easement platted on the rear of Lot 23, Block 2, Classen Parked Addition to Sedgwick County, Kansas, which is east of a line connecting a point on the north lot line 120 feet east of the northwest lot corner with a point on the south lot line 120 feet east of the southwest lot corner; AND

All the easement platted on the rear of Lot 24, Block 2, Classen Parked Addition to Sedgwick County, Kansas, which is east of a line connecting a point on the north lot line 120 feet east of the northwest lot corner with a point on the south lot line 120 feet east of the southwest lot corner; (MAPC NO. V-1203);

be and the same are hereby vacated in accordance with K.S.A. 13-443, subject, however, to the concurrence in such vacation by the Board of County Commissioners as by law provided.

SECTION 2. That it is hereby recommended to the Board of County Commissioners of Sedgwick County, Kansas, that said above described easements be vacated by said Board in case a proper petition is filed under the provisions of K.S.A. 12-504, 12-505 and K.S.A. 12-506.

SECTION 3. That this Ordinance shall be in force and take effect from and after its passage and publication once in the official city paper.

PASSED AND APPROVED at Wichita, Kansas this 30TH day of AUGUST, 1983.

ATTEST:

Margalee Wright, Mayor

Donald C. Gisick, City Clerk

(SEAL)

July 7, 1983

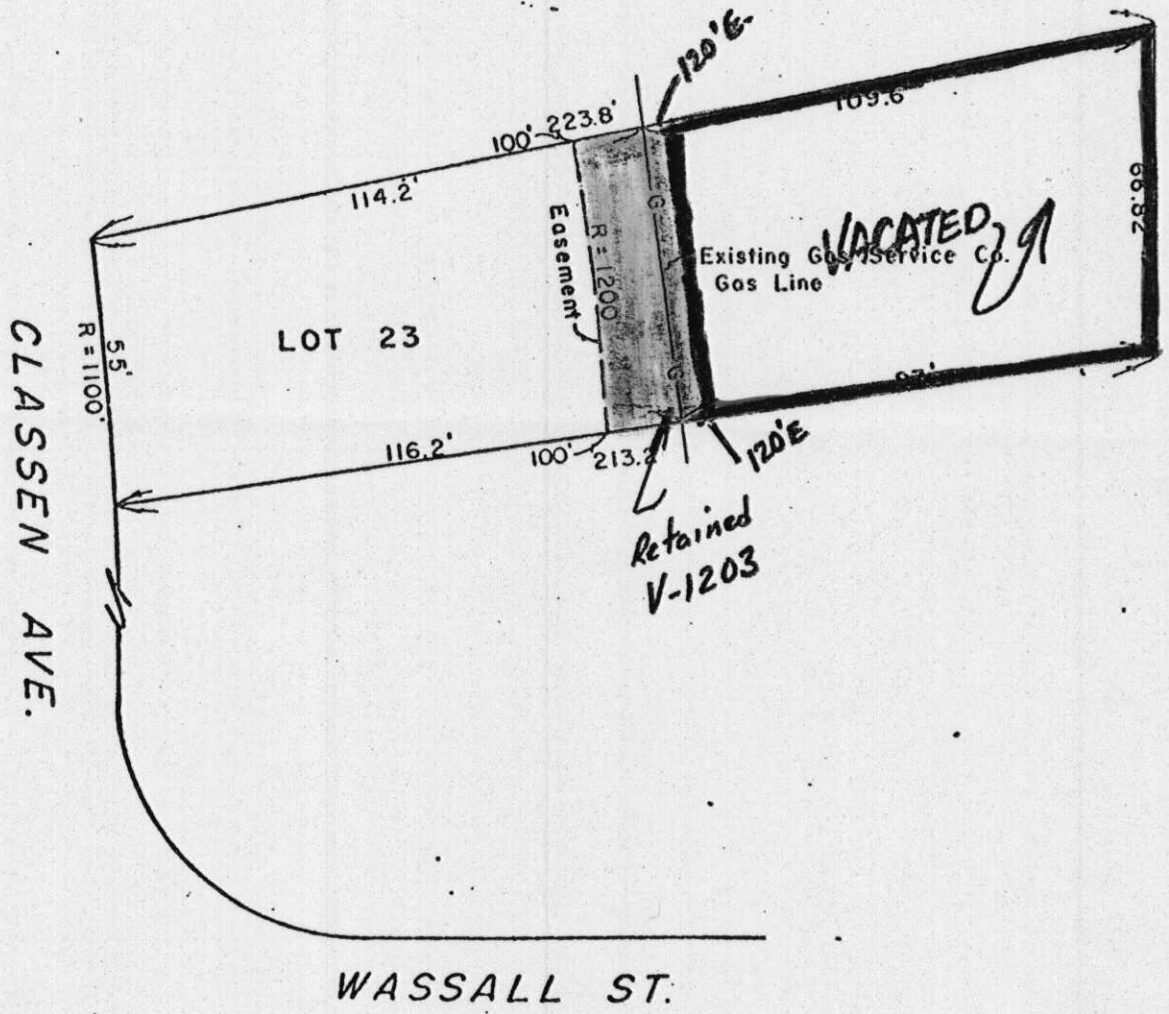
State of Kansas
County of Sedgwick) SS

I, Lowell D. High, Land Surveyor in the State of Kansas do hereby certify that I did on the 7th day of July, 1983, locate the existing Gas Service Company gas line on the following described property:

Lot 23, Block 2, Classen Parked Addition in Sedgwick County, Kansas.

The accompanying plat is a true and correct exhibit of said survey.

Lowell D. High
Lowell D. High, L.S.



1" = 40'

V-1203

WASSALL ST.