

May 29, 1984

RECOMMENDATION FROM MAPC TO BOARD OF CITY COMMISSIONERS

V-1264 - VACATION OF MOST PLATTED BUILDING SETBACKS WITHIN RIVER OAKS ADDITION LOCATED EAST OF HYDRAULIC IN AN AREA NORTH OF 55TH STREET SOUTH.

The Planning Commission recommends approval subject to all proceedings being at the expense of the applicant.

Gardner moved, Bayouth seconded and it carried unanimously. Hansen was absent. (5-17-84)

ACTION: Approve the vacation request and place the ordinance on first reading.

VACATION CASE DATA

Legal Description: All platted building setback lines in River Oaks Addition to Wichita, Sedgwick County, Kansas, EXCEPT the 20-foot setback from Hydraulic on Lot 1, Block 1, Lots 1 through 17, Block 3, and Lot 1, Block 10; and EXCEPT the 20-foot setback from Lockwood on Lots 3 and 12, Block 1; AND EXCEPT the 20-foot setback from Kansas on Lot 2, Block 3 and Lot 3, Block 4; and EXCEPT the 20-foot setback from Maywood on Lots 31 and 32, Block 5; and EXCEPT the 20-foot setback from Minneapolis on Lot 32, Block 5, all in River Oaks Addition to Wichita, Sedgwick County, Kansas.

Applicant: Resla, Inc., et al
225 N. Main, 67202

Protestors: Jo B. Jones, 1912 E. Lockwood, 67216
Cecil J. Henry, 1903 E. Lockwood, 67216

(99014) (Published in the Daily Record JUNE 8, 1984)

ORDINANCE NO. 38-811

AN ORDINANCE VACATING CERTAIN PLATTED BUILDING SETBACK LINES IN RIVER OAKS ADDITION TO WICHITA, SEDGWICK COUNTY, KANSAS.

BE IT ORDAINED BY THE GOVERNING BODY OF THE CITY OF WICHITA, KANSAS.

SECTION 1. That the platted building setback lines described as follows, to-wit:

All platted building setback lines in River Oaks Addition to Wichita, Sedgwick County, Kansas, EXCEPT the 20-foot setback from Hydraulic on Lot 1, Block 1, Lots 1 through 17, Block 3, and Lot 1, Block 10; and EXCEPT the 20-foot setback from Lockwood on Lots 3 and 12, Block 1; AND EXCEPT the 20-foot setback from Kansas on Lot 2, Block 3 and Lot 3, Block 4; and EXCEPT the 20-foot setback from Maywood on Lots 31 and 32, Block 5; and EXCEPT the 20-foot setback from Minneapolis on Lot 32, Block 5, all in River Oaks Addition to Wichita, Sedgwick County, Kansas; (MAPC NO. V-1264);

be and the same are hereby vacated in accordance with K.S.A. 13-443, subject however, to the concurrence in such vacation by the Board of County Commissioners as by law provided.

SECTION 2. That it is hereby recommended to the Board of County Commissioners of Sedgwick County, Kansas, that said above described building setback lines be vacated by said Board in case a proper petition is filed under the provisions of K.S.A. 12-504, 12-505 and K.S.A. 12-506.

SECTION 3. That this Ordinance shall be in force and take effect from and after its passage and publication once in the official city paper.

PASSED AND APPROVED at Wichita, Kansas, this 5TH day of JUNE, 1984.

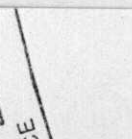
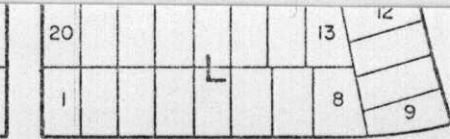
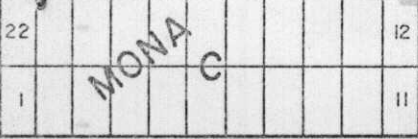
ATTEST:

Robert G. Knight, Mayor

Donald C. Gisick, City Clerk

(SEAL)

HYDRAULIC

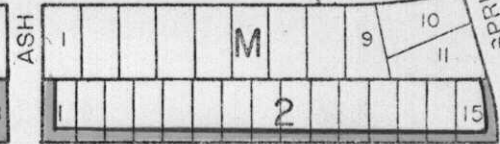
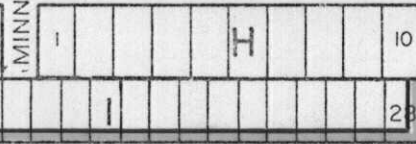
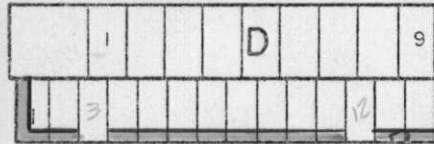


FIFTY THIRD

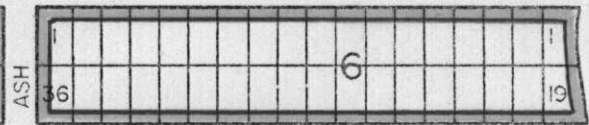
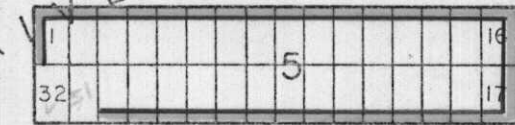
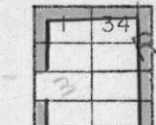
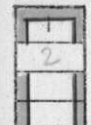
ST. SO.

SPRUC

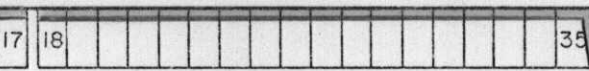
MINNESOTA AVE



LOCKWOOD



MAYWOOD

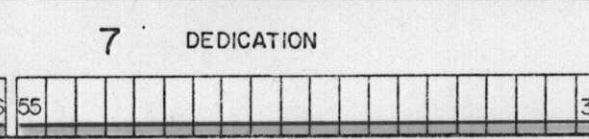
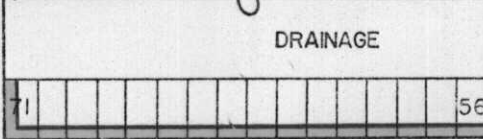


OAKS

DRAINAGE

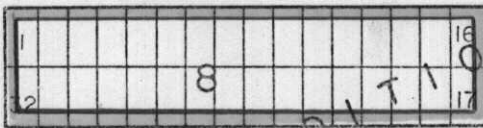
7

DEDICATION



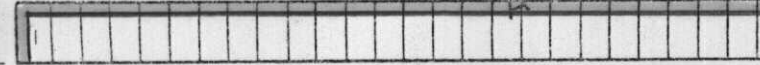
54 TH. STREET

MINNEAPOLIS



CAMPUS

ADDITION



100' x 125' 20' 1/2'

No 8669 56. m 195 49/10

DRAINAGE DEDICATION

48

47