

RECOMMENDATION FROM MAPC TO BOARD OF CITY COMMISSIONERS

V-1243 - VACATION OF CERTAIN PLATTED MINIMUM BUILDING PAD ELEVATIONS IN BRUSH CREEK ADDITION LOCATED SOUTH OF 37TH STREET NORTH IN AN AREA EAST OF WOODLAWN.

The Planning Commission recommends approval subject to all proceedings being without cost to the City, County, or any utility company.

Bayouth moved, Goebel seconded and it carried unanimously. Chisholm and Wilson were absent. (2-23-84).

ACTION: Approve the vacation request as recommended by the Metropolitan Area Planning Commission and place the ordinance on first reading.

VACATION CASE DATA

Legal Description: Vacate totally the platted minimum building pad on Lot 1, Block 1; Lots 1-17, Block 2; and Lots 2-7, 10-16, and 20-36, Block 3.

Vacate 1.6 feet of the platted minimum building pad on Lots 3-18, Block 1; Lots 18-25, Block 2; and Lots 1, 8, 9, 17, 18 and 19, Block 3; (I.e. reduce the pad from 1365 to 1363.4 m.s.l.)

Note: the minimum building pad for Lot 2, Block 1 remains as platted at 1363.0 m.s.l.

Applicant: Brush Creek Community, a Joint Venture
attn: Earl M. Steward III
1101 Gretchen, 67206

Protestors (If any): None

(98684) (Published in The Daily Record MARCH 23, 1984)

ORDINANCE NO. 38-751

AN ORDINANCE VACATING CERTAIN MINIMUM BUILDING
PAD ELEVATIONS PLATTED IN BRUSH CREEK ADDITION,
WICHITA, KANSAS.

BE IT ORDAINED BY THE GOVERNING BODY OF THE
CITY OF WICHITA, KANSAS:

SECTION 1. That the platted minimum building pad
elevations, or portions thereof, described as follows, to-wit:

The entire platted minimum building pad
elevations for Lot 1, Block 1; Lots 1-17,
Block 2; and Lots 2-7, 10-16, and 20-36,
Block 3, Brush Creek Addition, Wichita,
Kansas; AND

One and six-tenths (1.6) feet of the
platted minimum building pad elevations
on Lots 3-18, Block 1; Lots 18-25,
Block 2; and Lots 1, 8, 9, 17, 18 and 19,
Block 3, Brush Creek Addition, Wichita,
Kansas, (I.e. reduce these pads from
1365.0 sea level datum to 1363.4
sea level datum); (MAPC NO. V-1243);

be and the same are hereby vacated in accordance with K.S.A. 13-443,
subject, however, to the concurrence in such vacation by the Board
of County Commissioners as by law provided. The minimum pad eleva-
tion of 1363.0 sea level datum on Lot 2, Block 1, Brush Creek
Addition, Wichita, Kansas, remains as platted.

SECTION 2. That it is hereby recommended to the Board of
County Commissioners of Sedgwick County, Kansas, that said above
described minimum building pad elevations be vacated by said
Board in case a proper petition is filed under the provisions of
K.S.A. 12-504, 12-505 and K.S.A. 12-506.

SECTION 3. That this Ordinance shall be in force and
take effect from and after its passage and publication once in
the official city paper.

PASSED AND APPROVED at Wichita, Kansas this 20TH
day of MARCH, 1984.

ATTEST:

Margalee Wright, Mayor

Donald C. Gisick, City Clerk

(SEAL)

WOODLAWN

CHILD CREEK

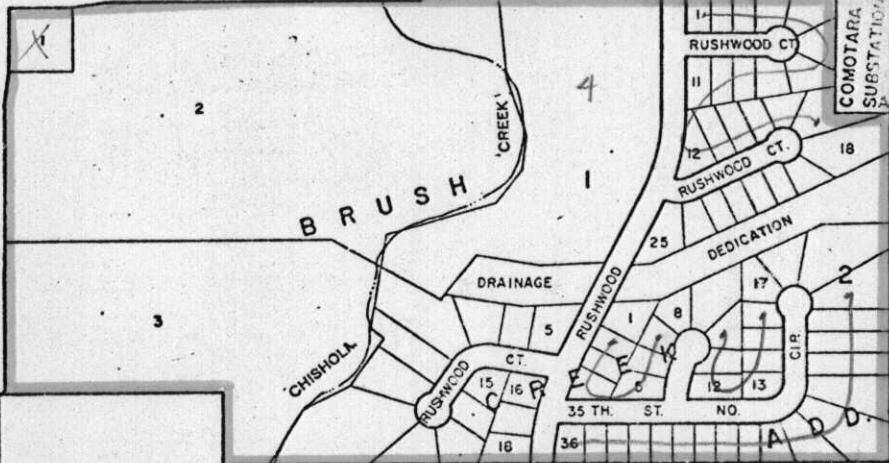
ADD.

37th ST BOOSTER PUMPING STATION ADDITION

37TH ST. NO.

37TH ST. NO.

BLVD.



COMOTARA SUBSTATION

FORK