

Planning Agenda Item # \_\_\_\_\_

City of Wichita  
City Council Meeting  
October 23, 1990

Agenda Report # \_\_\_\_\_

TO: Mayor and City Council Members

SUBJECT: PUBLIC HEARING V-1673 - REQUEST TO VACATE SANITARY SEWER  
EASEMENTS AND A BUILDING SETBACK LOCATED BETWEEN ST. FRANCIS  
AND SANTA FE, SOUTH OF 9TH STREET.  
(District #1A)

INITIATED BY: Metropolitan Area Planning Department

AGENDA ACTION: Planning

-----  
Staff Recommendation: Approve vacation of setback and easements.

MAPC Recommendation: Approve vacation of setback and easements.  
(unanimous)

Background: This vacation is being requested by St. Francis Medical Center in order to construct additional medical facilities and a parking garage adjacent to the existing hospital facilities. A requirement before this vacation could go to Council was that the applicant seal off and abandon the east/west sanitary sewer. This has been satisfied by the applicant. The vacation request has been reviewed and approved by the Planning Commission, subject to conditions.

Legal Considerations: The City Clerk needs to certify as to proper notification and no filing of written protest.

Recommendations/Action: Close public hearing, approve vacation; authorize the Mayor to sign the Vacation Order; and record certified copy of Order, recording costs to be billed to:

150029-2909

Approved / Accepted By City Council

This ... OCT 23 1990

Page 1 of 2

BEFORE THE CITY COUNCIL OF THE CITY OF WICHITA, SEDGWICK COUNTY, KANSAS

IN THE MATTER OF THE VACATION OF PLATTED )  
BUILDING SETBACK AND SANITARY SEWER )  
EASEMENTS. )  
 )  
GENERALLY LOCATED SOUTH OF 9TH STREET )  
NORTH AND WEST OF SANTA FE. (V-1673) )  
 )  
 )  
MORE FULLY DESCRIBED BELOW )

VACATION ORDER

NOW on this 23 day of October, 1990, comes on for hearing the petition for vacation filed by St. Francis Regional Medical Center, Inc., praying for the vacation of the following described sanitary sewer easements and a portion of a platted building setback, to-wit:

See Attachment A

The City Council, after being duly and fully informed as to fully understand the true nature of this petition and the propriety of granting the same, makes the following findings:

1. That due and legal notice has been given by publication as required by law, by publication in the Daily Record of notice of this vacation proceeding for consecutive weeks on OCT 9 1990 + OCT 16 1990.
2. No private rights will be injured or endangered by the vacation of the above-described platted building setback and sanitary sewer easements, and the public will suffer no loss or inconvenience thereby.
3. In justice to the petitioner(s), the prayer of the petition ought to be granted.
4. No written objection to said vacation has been filed with the City Clerk by any owner or adjoining owner who would be a proper party to the petition.
5. The vacation of the platted building setback and sanitary sewer easements described herein should be approved.

MICROFILMED OF RECORD

10.c.c.k

city clerk

200 11110 711 11 12

Vacation Order  
V-1673  
Page 2 of 2

IT IS, THEREFORE, BY THE CITY COUNCIL, on this 23 day of October, 1990, ordered that the above-described platted building setback and sanitary sewer easements is hereby vacated. IT IS FURTHER ORDERED that the City Clerk shall certify a copy of this order to the Register of Deeds of Sedgwick County.



*Bob Knight*  
\_\_\_\_\_  
Bob Knight, Mayor

ATTEST:

*Pat Burnett*  
\_\_\_\_\_  
Pat Burnett, Deputy City Clerk

Approved as to Form:

*Thomas Powell*  
\_\_\_\_\_  
Thomas Powell, Director of Law

State of Kansas }  
Sedgwick County) ss  
City of Wichita )  
I, *Cheryl Albany* Deputy City Clerk of the City  
of Wichita, Kansas, do hereby certify that the document  
to which this is affixed is a true and correct copy of  
the original on file in the office of the City Clerk.  
Given under my hand and seal of the City of  
Wichita, this 24th day of Nov., 1990  
*Cheryl Albany* Deputy City Clerk



STATE OF KANSAS } ss  
SEDGWICK COUNTY )  
REGISTER OF DEEDS  
NOV 26 1990  
1109270

REGISTER  
OF DEEDS

*Cheryl Albany*

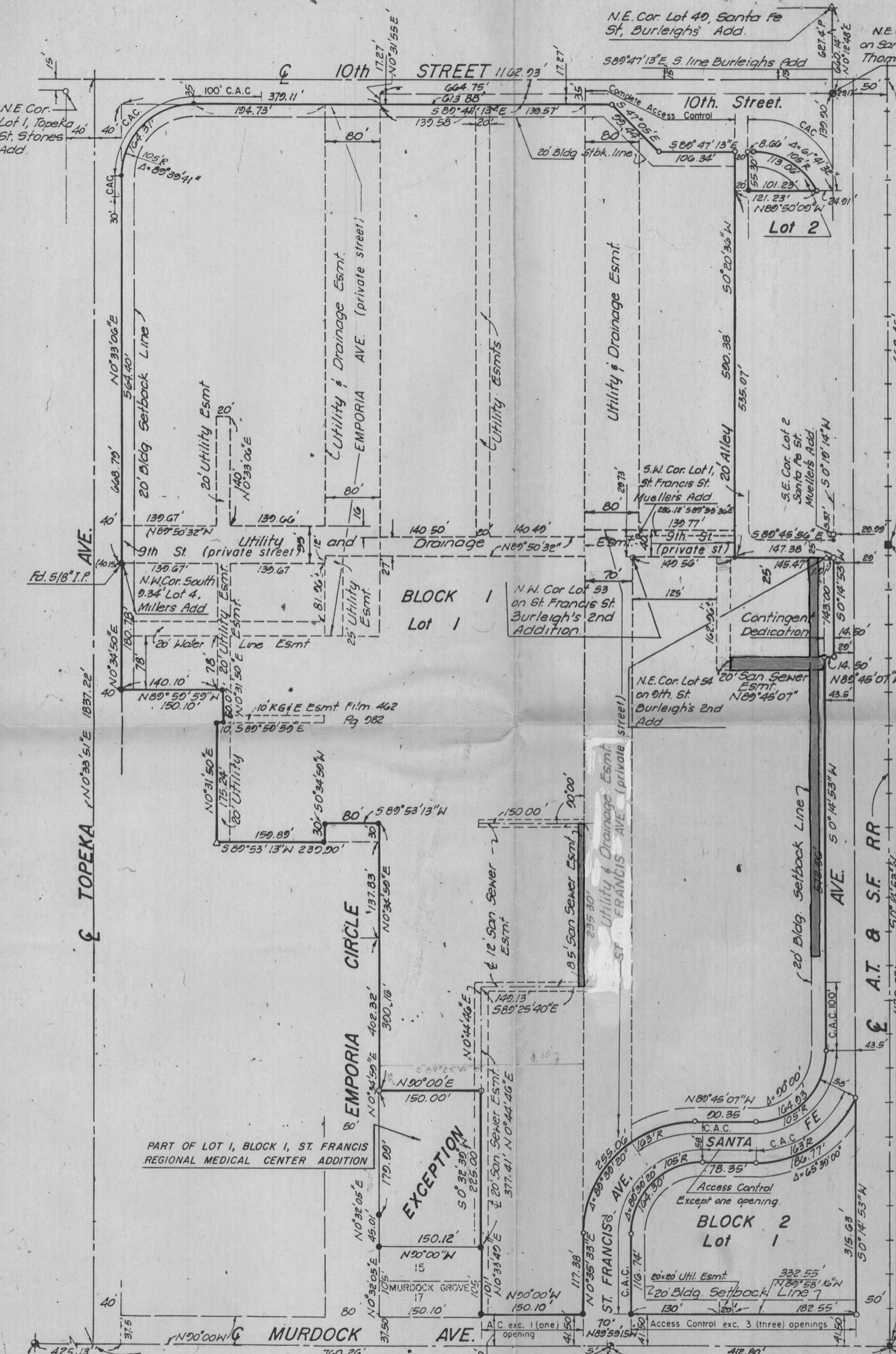
Attachment A  
V-1673

A 20 foot sanitary sewer easement in Lot 1, Block 1, St. Francis Regional Medical Center 2nd Addition to Wichita, Sedgwick County, Kansas, described as follows:

Beginning at a point on the west line of Santa Fe Avenue, 163 feet south of the south line of ninth street; thence bearing in N  $89^{\circ}45'07''$  W, a distance of 137.5 feet; thence bearing N  $00^{\circ}14'53''$  E, a distance of 20 feet; thence bearing S  $89^{\circ}45'07''$  W, a distance of 137.5 feet to the west line of Santa Fe Avenue; thence south, along the west line of Santa Fe Avenue, 20 feet to the point of beginning.

Another sanitary sewer easement being 8.50 feet in width and immediately west of the following described line: Commencing at the intersection of the north line of Murdock Avenue with the west line of St. Francis Avenue as shown in St. Francis Regional Medical Center 2nd Addition to Wichita, Sedgwick County, Kansas; thence bearing N  $0^{\circ}35'33''$  E along the west line of St. Francis Avenue extended north a distance of 482.91 feet to the point of beginning; thence continuing bearing N  $0^{\circ}35'33''$  E a distance of 223.30 feet to the point of ending.

The West 13 feet of the 20 foot building setback in Lot 1, Block 1, St. Francis Regional Medical Center 2nd Addition to Wichita, Sedgwick County, Kansas, adjacent to Santa Fe Avenue and described as beginning at the south line of ninth street, thence south 585 feet.



Scale 1" = 100'

- = 3/4" I.P. Set
- = 3/4" I.P. Fd.
- △ = 1/2" I.P. Fd.
- = 1" rebar Fd.
- = Fd. nail & washer
- ⊙ = Exist. thimble
- C.A.C. = Complete Access Control

Note:  
All exist. & set I.P.s in this plat, have been tagged "P.E.C. P.A."

B.M. Brass Rod in Conc. post 20' West & 22' So. of @'s Broadway & 9th Street. Elev. = 114.23 City Datum.

PART OF LOT 1, BLOCK 1, ST. FRANCIS REGIONAL MEDICAL CENTER ADDITION

EXCEPTION

B.M. Brass Rod in Conc. post 20' West & 22' South of @'s Broadway & 9th Street. Elev. = 114.23 City Datum.

@ Murdock at @ St. Francis St. South.

@ Murdock at @ Washington



N.E. Cor. Lot 40, Santa Fe St, Burleighs Add.  
589°47'13"E. S. line Burleighs Add

N.E. Cor. Lot 1, Topeka St, Stones Add.

N.E. Cor. Lot 50 on Santa Fe St, Thomas Add.

S.W. Cor. Lot 1, St. Francis St, Muellers Add.  
286.18' 589°53'30"E

S.E. Cor. Lot 2 on Santa Fe St, Muellers Add.  
50°10'14"W

N.W. Cor. Lot 53 on St. Francis St, Burleighs 2nd Addition.

N.E. Cor. Lot 54 on 9th St, Burleighs 2nd Add

Contingent Dedication

BLOCK 2 Lot 1

SANTA FE

MURDOCK AVE.

TOPEKA AVE.

EMPORIA CIRCLE

ST. FRANCIS AVE.

A.T. & S.F. RR

10th STREET

10th Street.

AVE.

9th St (private street)

EMPORIA

MURDOCK AVE.

ST. FRANCIS AVE.

A.T. & S.F. RR

EMPORIA CIRCLE

BLOCK 1 Lot 1

BLOCK 2 Lot 1

SANTA FE

MURDOCK AVE.

TOPEKA AVE.

EMPORIA CIRCLE

ST. FRANCIS AVE.

A.T. & S.F. RR

10th STREET

10th Street.

AVE.

9th St (private street)

EMPORIA

MURDOCK AVE.

ST. FRANCIS AVE.

A.T. & S.F. RR

EMPORIA CIRCLE

BLOCK 1 Lot 1

BLOCK 2 Lot 1

SANTA FE

MURDOCK AVE.

TOPEKA AVE.

EMPORIA CIRCLE

ST. FRANCIS AVE.

A.T. & S.F. RR

10th STREET

10th Street.

AVE.

9th St (private street)

EMPORIA

MURDOCK AVE.

ST. FRANCIS AVE.

A.T. & S.F. RR

EMPORIA CIRCLE

BLOCK 1 Lot 1

BLOCK 2 Lot 1

SANTA FE

MURDOCK AVE.

TOPEKA AVE.

EMPORIA CIRCLE

ST. FRANCIS AVE.

A.T. & S.F. RR

10th STREET

10th Street.

AVE.

9th St (private street)

EMPORIA

MURDOCK AVE.

ST. FRANCIS AVE.

A.T. & S.F. RR

EMPORIA CIRCLE

BLOCK 1 Lot 1

BLOCK 2 Lot 1

SANTA FE

MURDOCK AVE.

TOPEKA AVE.

EMPORIA CIRCLE

ST. FRANCIS AVE.

A.T. & S.F. RR

10th STREET

10th Street.

AVE.

9th St (private street)

EMPORIA

MURDOCK AVE.

ST. FRANCIS AVE.

A.T. & S.F. RR

EMPORIA CIRCLE

BLOCK 1 Lot 1

BLOCK 2 Lot 1

SANTA FE

MURDOCK AVE.

TOPEKA AVE.

EMPORIA CIRCLE

ST. FRANCIS AVE.

A.T. & S.F. RR

10th STREET

10th Street.

AVE.

9th St (private street)

EMPORIA

MURDOCK AVE.

ST. FRANCIS AVE.

A.T. & S.F. RR

EMPORIA CIRCLE

BLOCK 1 Lot 1

BLOCK 2 Lot 1

SANTA FE

MURDOCK AVE.

TOPEKA AVE.

EMPORIA CIRCLE

ST. FRANCIS AVE.

A.T. & S.F. RR

10th STREET

10th Street.

AVE.

9th St (private street)

EMPORIA

MURDOCK AVE.

ST. FRANCIS AVE.

A.T. & S.F. RR

EMPORIA CIRCLE

BLOCK 1 Lot 1

BLOCK 2 Lot 1

SANTA FE

MURDOCK AVE.

TOPEKA AVE.

EMPORIA CIRCLE

ST. FRANCIS AVE.

A.T. & S.F. RR

10th STREET

10th Street.

AVE.

9th St (private street)

EMPORIA

MURDOCK AVE.

ST. FRANCIS AVE.

A.T. & S.F. RR

EMPORIA CIRCLE

BLOCK 1 Lot 1

BLOCK 2 Lot 1

SANTA FE

MURDOCK AVE.

TOPEKA AVE.

EMPORIA CIRCLE

ST. FRANCIS AVE.

A.T. & S.F. RR

10th STREET

10th Street.

AVE.

9th St (private street)

EMPORIA

MURDOCK AVE.

ST. FRANCIS AVE.

A.T. & S.F. RR

EMPORIA CIRCLE

BLOCK 1 Lot 1

BLOCK 2 Lot 1

SANTA FE

MURDOCK AVE.

TOPEKA AVE.

EMPORIA CIRCLE

ST. FRANCIS AVE.

A.T. & S.F. RR

10th STREET

10th Street.

AVE.

9th St (private street)

EMPORIA

MURDOCK AVE.

ST. FRANCIS AVE.

A.T. & S.F. RR

EMPORIA CIRCLE

BLOCK 1 Lot 1

BLOCK 2 Lot 1

SANTA FE

MURDOCK AVE.

TOPEKA AVE.

EMPORIA CIRCLE

ST. FRANCIS AVE.

A.T. & S.F. RR

10th STREET

10th Street.

AVE.

9th St (private street)

EMPORIA

MURDOCK AVE.

ST. FRANCIS AVE.

A.T. & S.F. RR

EMPORIA CIRCLE

BLOCK 1 Lot 1

BLOCK 2 Lot 1

SANTA FE

MURDOCK AVE.

TOPEKA AVE.

EMPORIA CIRCLE

ST. FRANCIS AVE.

A.T. & S.F. RR

10th STREET

10th Street.

AVE.

9th St (private street)

EMPORIA

MURDOCK AVE.

ST. FRANCIS AVE.

A.T. & S.F. RR

EMPORIA CIRCLE

BLOCK 1 Lot 1

BLOCK 2 Lot 1

SANTA FE

MURDOCK AVE.

TOPEKA AVE.

EMPORIA CIRCLE

ST. FRANCIS AVE.

A.T. & S.F. RR

10th STREET

10th Street.

AVE.

9th St (private street)

EMPORIA

MURDOCK AVE.

ST. FRANCIS AVE.

A.T. & S.F. RR

EMPORIA CIRCLE

BLOCK 1 Lot 1

BLOCK 2 Lot 1

SANTA FE

MURDOCK AVE.

TOPEKA AVE.

EMPORIA CIRCLE

ST. FRANCIS AVE.

A.T. & S.F. RR

10th STREET

10th Street.

AVE.

9th St (private street)

EMPORIA

MURDOCK AVE.

ST. FRANCIS AVE.

A.T. & S.F. RR

EMPORIA CIRCLE

BLOCK 1 Lot 1

BLOCK 2 Lot 1

SANTA FE

MURDOCK AVE.

TOPEKA AVE.

EMPORIA CIRCLE

ST. FRANCIS AVE.

A.T. & S.F. RR

10th STREET

10th Street.

AVE.

9th St (private street)

EMPORIA

MURDOCK AVE.

ST. FRANCIS AVE.

A.T. & S.F. RR

EMPORIA CIRCLE

BLOCK 1 Lot 1

BLOCK 2 Lot 1

SANTA FE

MURDOCK AVE.

TOPEKA AVE.

EMPORIA CIRCLE

ST. FRANCIS AVE.

A.T. & S.F. RR

10th STREET

10th Street.

AVE.

9th St (private street)

EMPORIA

MURDOCK AVE.