

Planning Agenda Item # \_\_\_\_\_

City of Wichita  
City Council Meeting  
September 15, 1992

Agenda Report # \_\_\_\_\_

TO: Mayor and City Council Members

SUBJECT: V-1781 REQUEST TO VACATE A DRAINAGE AND A SANITARY SEWER EASEMENTS

INITIATED BY: Metropolitan Area Planning Department

AGENDA ACTION: Planning

*McGraw*

-----  
Staff Recommendation: Approve vacation of drainage and sanitary sewer easements.

MAPC Recommendation: Approve vacation of drainage and sanitary sewer easements. (unanimous)

Background: In order to obtain more buildable area in the backyard of the property, the property owner has provided the County with a substitute easement to replace the easements requested for vacation. The applicant has also made arrangements with the County to pay any costs involved with moving or redesigning the utilities involved with these easements. County Engineering and the Subdivision Committee have indicated that the easements may be vacated with no negative impacts expected. The vacation request has been reviewed and approved by the Planning Commission, subject to conditions.

Legal Considerations: This request for vacation is located on property outside the City of Wichita, but within three miles thereof. As such, no petition, publication of notification or public hearing is required before the Wichita City Council.

Recommendations/Action: Approve vacation.

FILE COPY

SEDGWICK COUNTY

METROPOLITAN AREA PLANNING  
DEPARTMENT

CITY HALL — TENTH FLOOR  
455 NORTH MAIN STREET  
WICHITA, KANSAS 67202-1688  
(316) 268-4421

August 28, 1992

Gary Wiley  
Professional Engineering Consultants, Inc. P. A.  
303 S. Topeka  
Wichita, KS 67202

Re: V-1781 Request to vacate a drainage and sanitary sewer  
easements

Dear Mr. Wiley:

At the August 27, 1992 meeting of the Metropolitan Area Planning Commission the above-referenced vacation request was approved subject to the conditions recommended by the Subdivision Committee and stated in our letter of August 21, 1992. Since you have completed all the approval conditions, we are automatically scheduling this case for review by the Wichita City Council on Tuesday, September 15, 1992. Since this case is in the County, if approved by the City Council, it will be forwarded to the County Commission for the required public hearing at the first available hearing date following the required publications of the hearing notice.

Sincerely,



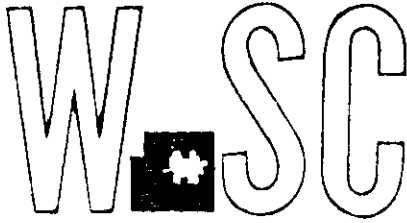
Don Losew  
Senior Planner

DL:rh

cc: Ritchie Associates, Inc., c/o Jack Ritchie, 8100 East 22nd  
Street North - Building 1000, Wichita, KS 67226  
Mike Lindebak, City Engineer

REC'D

WICHITA — SEDGWICK COUNTY



METROPOLITAN AREA PLANNING  
DEPARTMENT

CITY HALL — TENTH FLOOR  
455 NORTH MAIN STREET  
WICHITA, KANSAS 67202-1688  
(316) 268-4421

August 21, 1992

Gary Wiley  
Professional Engineering Consultants, Inc. P. A.  
303 S. Topeka  
Wichita, KS 67202

Re: V-1781 Request to vacate a drainage and sanitary sewer easements

Dear Mr. Wiley:

At the regular meeting of the Subdivision Committee of the Metropolitan Area Planning Commission, Thursday, August 20, 1992, the above-captioned vacation request was considered. The action of the Committee was to recommend that this vacation be approved subject to:

- A. Any relocation or reconstruction of utilities necessitated by this vacation shall be the sole responsibility of the applicant.

This matter will be forwarded to the Planning Commission for its consideration on Thursday, August 27, 1992 at 1:30 p.m.

If you have any questions, please call - 268-4459.

Sincerely,

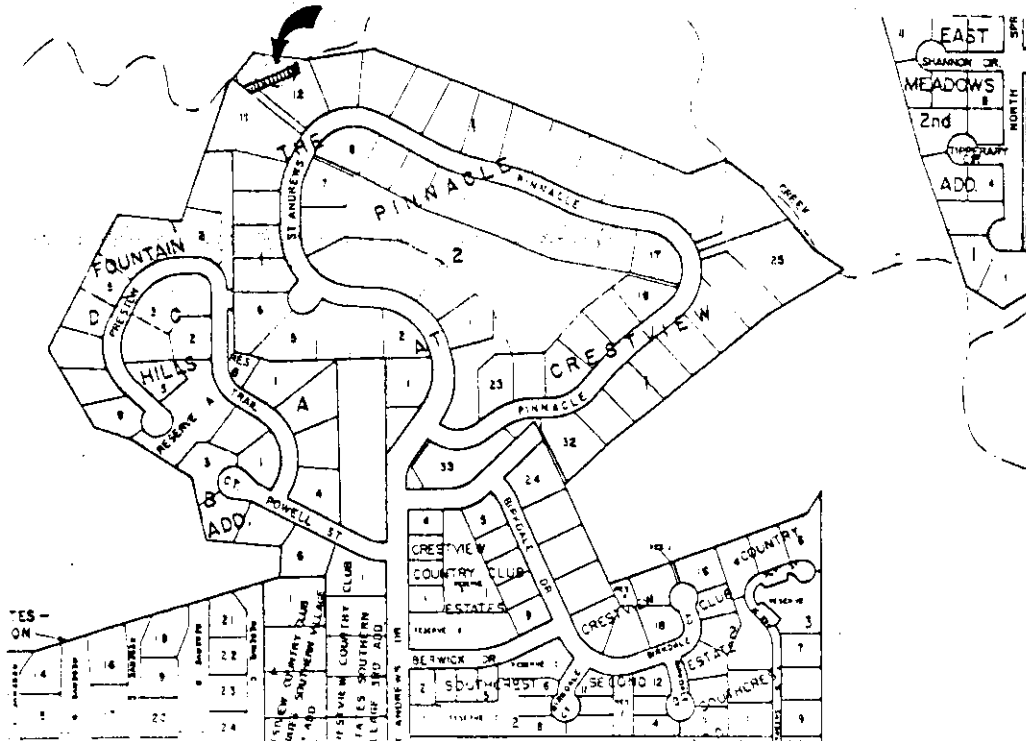
Don Losew  
Senior Planner

DL:rh

cc: Ritchie Associates, Inc., c/o Jack Ritchie, 8100 East 22nd  
Street North - Building 1000, Wichita, KS 67226  
Mike Lindebak, City Engineer

FILE COPY





Application Filed 8/3/92  
 S/D Comm. Action 8/20/92 *App*  
 M.A.P.C. Action 8/27/92  
Approved

W.C.C. Action 9-15-92  
Approved  
 Bd. Co. Co. Action 10-25-92 *Approved*  
 Order to Vacate Recorded

*March 10 1993*