

(_____) Published in The Daily Reporter on May 30, 1983

R E S O L U T I O N

CASE NO. CU-267

R#393-1983

A RESOLUTION PERMITTING THE ESTABLISHMENT OF CLUSTER SINGLE-FAMILY DEVELOPMENTS IN THE "AA" ONE-FAMILY DWELLING DISTRICT ON CERTAIN LANDS LOCATED WITHIN THE UNINCORPORATED TERRITORY LYING WITHIN THREE MILES OF EITHER THE CITY OF WICHITA, THE CITY OF HAYSVILLE, THE CITY OF DERBY, THE CITY OF MULVANE, THE CITY OF VALLEY CENTER, THE CITY OF GODDARD, AND THAT PORTION OF THE AREA WITHIN THREE MILES OF THE CITY OF CHENEY AS ESTABLISHED BY THE BOARD OF COUNTY COMMISSIONERS ON OCTOBER 3, 1973, ALL IN SEDGWICK COUNTY, KANSAS, UNDER THE AUTHORITY GRANTED BY SECTION 5.A.10.i AND SECTION 11.E OF THE ZONING RESOLUTION ADOPTED BY THE BOARD OF COUNTY COMMISSIONERS OF SEDGWICK COUNTY, KANSAS, ON MARCH 3, 1958, AND SUBSEQUENT AMENDMENTS THERETO.

BE IT RESOLVED BY THE BOARD OF COMMISSIONERS OF SEDGWICK COUNTY, KANSAS:

SECTION 1. That after receiving a recommendation from the Wichita-Sedgwick County Metropolitan Area Planning Commission and after said Planning Commission has given proper notice and held a public hearing as provided by law, and under authority granted by Section 5.A.10.i, and Section 11.E of the Zoning Resolution, a Conditional Use Permit to allow the establishment of cluster single-family developments in the "AA" One-Family Dwelling District is hereby approved on the lands legally described as follows:

The south 85 feet of Lots 1 and 2 and all of Lots 3 through 9, Block 2; Lots 25 and 26, Block 4; and Lots 1 through 15, Block 6, all in Crestview Country Club Estates Bridgwood Addition, Sedgwick County, Kansas. Generally located at the northwest corner of 13th Street North and 127th Street East.

SUBJECT TO THE FOLLOWING:

- a. Approval of a zone change (SCZ-0528) from "R-1" to "AA" by the Board of County Commission.
- b. A site plan shall be submitted to the Planning Department for review and approval for each lot prior to the issuance of any building permits for that lot. The site plan shall show all proposed structures, setbacks, drives, easements, etc.
- c. The maximum number of dwelling units per site shall be:


<u>Area</u>	<u>Max DU</u>
The south 85' of lots 1 & 2 & all of lots 6 & 7, Block 2, Bridgwood Addition	9
Lots 3, 4, 5, 8 and 9 Block 2, Bridgwood Addition	12
Lots 25 and 26, Block 4 Bridgwood Add.	7
Lots 1 through 15, Block 6, Bridgwood Add.	32

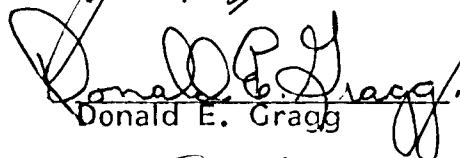
- d. Development in the areas described above shall be limited to detached single-family dwellings.


SECTION II. That upon the taking effect of this Resoluiton, the notation of such Conditional Use approval shall be entered in the Official Zoning atlas on file in the Office of the County Zoning Administrator and in the Office of the Wichita-Sedgwick County Metropolitan Area Planning Department.

SECTION III. That this Resolution shall take effect and be in force from and after its adoption and publication in the Official County Paper.

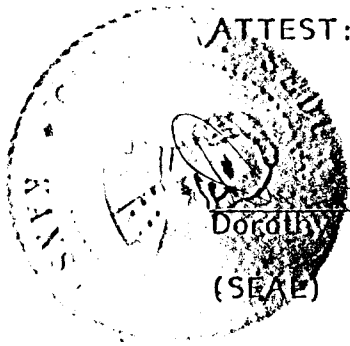
PASSED AND ADOPTED by the Board of County Commissioners at Wichita, Kansas, this 14th day of December, 1983.

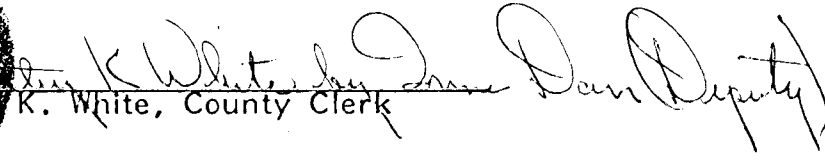

Jack Spratt, Chairman


Donald E. Gragg, Commissioner


Tom Scott, Commissioner

ATTEST:



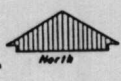
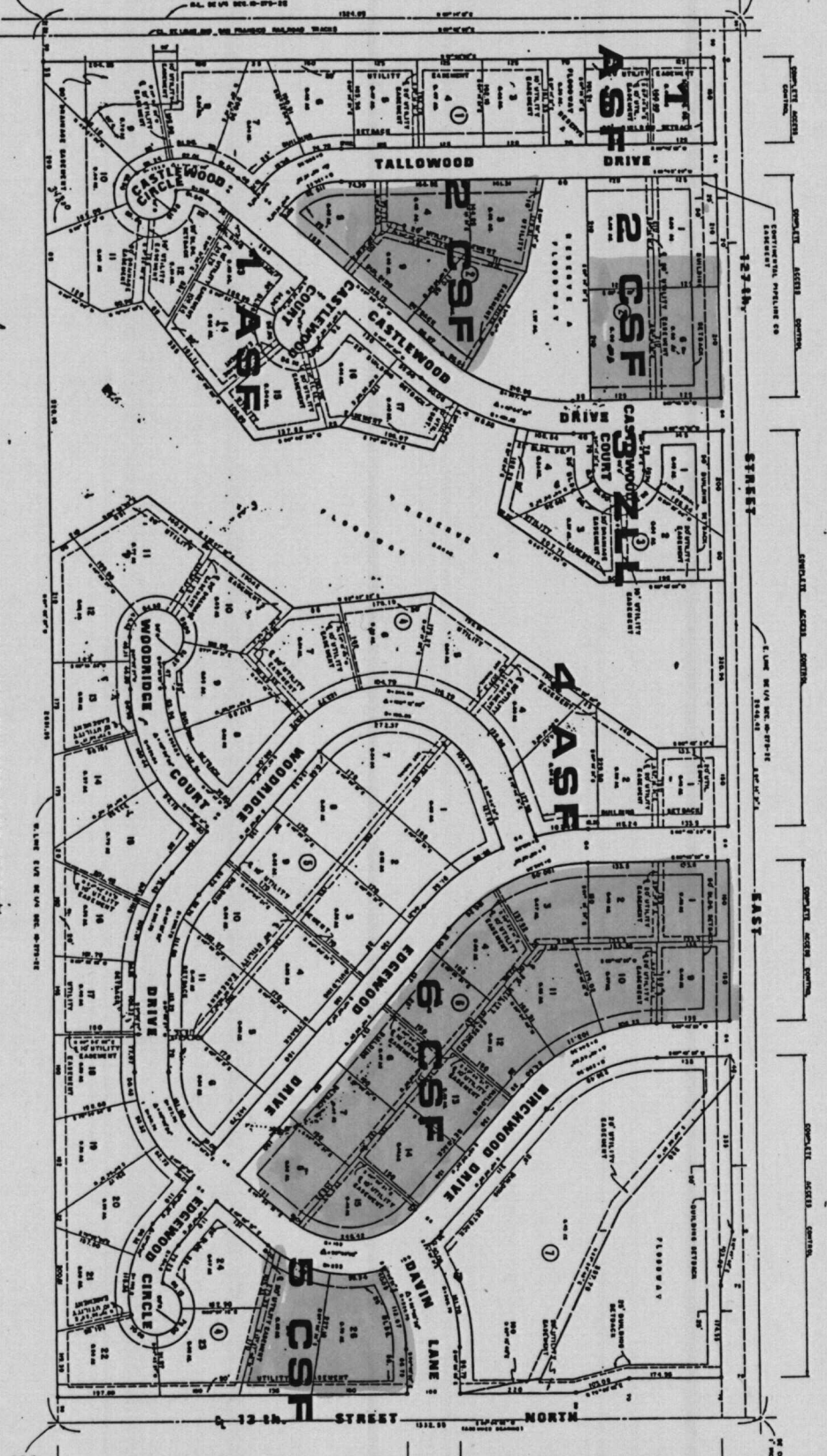

Dorothy K. White, County Clerk
(SEAL)

Approved as to form by County Counselor


William D. Rustin, County Counselor

ZLL ZERO LOT LINE
 CSF CLUSTER SINGLE FAMILY
 ASF ATTACHED SINGLE FAMILY

LOT	FLOOR	ELEVATIONS
12	1	1311
12	2	1312
12	3	1313
12	4	1314
12	5	1315
12	6	1316
12	7	1317
12	8	1318
12	9	1319
12	10	1320
12	11	1321
12	12	1322
12	13	1323
12	14	1324
12	15	1325
12	16	1326
12	17	1327
12	18	1328
12	19	1329
12	20	1330
12	21	1331
12	22	1332
12	23	1333
12	24	1334
12	25	1335
12	26	1336
12	27	1337
12	28	1338
12	29	1339
12	30	1340
12	31	1341
12	32	1342
12	33	1343
12	34	1344
12	35	1345
12	36	1346
12	37	1347
12	38	1348
12	39	1349
12	40	1350
12	41	1351
12	42	1352
12	43	1353
12	44	1354
12	45	1355
12	46	1356
12	47	1357
12	48	1358
12	49	1359
12	50	1360
12	51	1361
12	52	1362
12	53	1363
12	54	1364
12	55	1365
12	56	1366
12	57	1367
12	58	1368
12	59	1369
12	60	1370
12	61	1371
12	62	1372
12	63	1373
12	64	1374
12	65	1375
12	66	1376
12	67	1377
12	68	1378
12	69	1379
12	70	1380
12	71	1381
12	72	1382
12	73	1383
12	74	1384
12	75	1385
12	76	1386
12	77	1387
12	78	1388
12	79	1389
12	80	1390
12	81	1391
12	82	1392
12	83	1393
12	84	1394
12	85	1395
12	86	1396
12	87	1397
12	88	1398
12	89	1399
12	90	1400
12	91	1401
12	92	1402
12	93	1403
12	94	1404
12	95	1405
12	96	1406
12	97	1407
12	98	1408
12	99	1409
12	100	1410
12	101	1411
12	102	1412
12	103	1413
12	104	1414
12	105	1415
12	106	1416
12	107	1417
12	108	1418
12	109	1419
12	110	1420
12	111	1421
12	112	1422
12	113	1423
12	114	1424
12	115	1425
12	116	1426
12	117	1427
12	118	1428
12	119	1429
12	120	1430
12	121	1431
12	122	1432
12	123	1433
12	124	1434
12	125	1435
12	126	1436
12	127	1437
12	128	1438
12	129	1439
12	130	1440
12	131	1441
12	132	1442
12	133	1443
12	134	1444
12	135	1445
12	136	1446
12	137	1447
12	138	1448
12	139	1449
12	140	1450
12	141	1451
12	142	1452
12	143	1453
12	144	1454
12	145	1455
12	146	1456
12	147	1457
12	148	1458
12	149	1459
12	150	1460
12	151	1461
12	152	1462
12	153	1463
12	154	1464
12	155	1465
12	156	1466
12	157	1467
12	158	1468
12	159	1469
12	160	1470
12	161	1471
12	162	1472
12	163	1473
12	164	1474
12	165	1475
12	166	1476
12	167	1477
12	168	1478
12	169	1479
12	170	1480
12	171	1481
12	172	1482
12	173	1483
12	174	1484
12	175	1485
12	176	1486
12	177	1487
12	178	1488
12	179	1489
12	180	1490
12	181	1491
12	182	1492
12	183	1493
12	184	1494
12	185	1495
12	186	1496
12	187	1497
12	188	1498
12	189	1499
12	190	1500
12	191	1501
12	192	1502
12	193	1503
12	194	1504
12	195	1505
12	196	1506
12	197	1507
12	198	1508
12	199	1509
12	200	1510



Scale: 1"=100'

CRESTVIEW COUNTRY CLUB ESTATES
 BRIDGEWOOD ADDITION

SEDMWICK COUNTY, KANSAS
 1980

Legend
 30" 1980 2418

NO. 1, 2, 3, 4, 5, 6, 7, 8, 9, 10, 11, 12, 13, 14, 15, 16, 17, 18, 19, 20, 21, 22, 23, 24, 25, 26, 27, 28, 29, 30, 31, 32, 33, 34, 35, 36, 37, 38, 39, 40, 41, 42, 43, 44, 45, 46, 47, 48, 49, 50, 51, 52, 53, 54, 55, 56, 57, 58, 59, 60, 61, 62, 63, 64, 65, 66, 67, 68, 69, 70, 71, 72, 73, 74, 75, 76, 77, 78, 79, 80, 81, 82, 83, 84, 85, 86, 87, 88, 89, 90, 91, 92, 93, 94, 95, 96, 97, 98, 99, 100, 101, 102, 103, 104, 105, 106, 107, 108, 109, 110, 111, 112, 113, 114, 115, 116, 117, 118, 119, 120, 121, 122, 123, 124, 125, 126, 127, 128, 129, 130, 131, 132, 133, 134, 135, 136, 137, 138, 139, 140, 141, 142, 143, 144, 145, 146, 147, 148, 149, 150, 151, 152, 153, 154, 155, 156, 157, 158, 159, 160, 161, 162, 163, 164, 165, 166, 167, 168, 169, 170, 171, 172, 173, 174, 175, 176, 177, 178, 179, 180, 181, 182, 183, 184, 185, 186, 187, 188, 189, 190, 191, 192, 193, 194, 195, 196, 197, 198, 199, 200, 201, 202, 203, 204, 205, 206, 207, 208, 209, 210, 211, 212, 213, 214, 215, 216, 217, 218, 219, 220, 221, 222, 223, 224, 225, 226, 227, 228, 229, 230, 231, 232, 233, 234, 235, 236, 237, 238, 239, 240, 241, 242, 243, 244, 245, 246, 247, 248, 249, 250, 251, 252, 253, 254, 255, 256, 257, 258, 259, 260, 261, 262, 263, 264, 265, 266, 267, 268, 269, 270, 271, 272, 273, 274, 275, 276, 277, 278, 279, 280, 281, 282, 283, 284, 285, 286, 287, 288, 289, 290, 291, 292, 293, 294, 295, 296, 297, 298, 299, 300, 301, 302, 303, 304, 305, 306, 307, 308, 309, 310, 311, 312, 313, 314, 315, 316, 317, 318, 319, 320, 321, 322, 323, 324, 325, 326, 327, 328, 329, 330, 331, 332, 333, 334, 335, 336, 337, 338, 339, 340, 341, 342, 343, 344, 345, 346, 347, 348, 349, 350, 351, 352, 353, 354, 355, 356, 357, 358, 359, 360, 361, 362, 363, 364, 365, 366, 367, 368, 369, 370, 371, 372, 373, 374, 375, 376, 377, 378, 379, 380, 381, 382, 383, 384, 385, 386, 387, 388, 389, 390, 391, 392, 393, 394, 395, 396, 397, 398, 399, 400, 401, 402, 403, 404, 405, 406, 407, 408, 409, 410, 411, 412, 413, 414, 415, 416, 417, 418, 419, 420, 421, 422, 423, 424, 425, 426, 427, 428, 429, 430, 431, 432, 433, 434, 435, 436, 437, 438, 439, 440, 441, 442, 443, 444, 445, 446, 447, 448, 449, 450, 451, 452, 453, 454, 455, 456, 457, 458, 459, 460, 461, 462, 463, 464, 465, 466, 467, 468, 469, 470, 471, 472, 473, 474, 475, 476, 477, 478, 479, 480, 481, 482, 483, 484, 485, 486, 487, 488, 489, 490, 491, 492, 493, 494, 495, 496, 497, 498, 499, 500, 501, 502, 503, 504, 505, 506, 507, 508, 509, 510, 511, 512, 513, 514, 515, 516, 517, 518, 519, 520, 521, 522, 523, 524, 525, 526, 527, 528, 529, 530, 531, 532, 533, 534, 535, 536, 537, 538, 539, 540, 541, 542, 543, 544, 545, 546, 547, 548, 549, 550, 551, 552, 553, 554, 555, 556, 557, 558, 559, 560, 561, 562, 563, 564, 565, 566, 567, 568, 569, 570, 571, 572, 573, 574, 575, 576, 577, 578, 579, 580, 581, 582, 583, 584, 585, 586, 587, 588, 589, 590, 591, 592, 593, 594, 595, 596, 597, 598, 599, 600, 601, 602, 603, 604, 605, 606, 607, 608, 609, 610, 611, 612, 613, 614, 615, 616, 617, 618, 619, 620, 621, 622, 623, 624, 625, 626, 627, 628, 629, 630, 631, 632, 633, 634, 635, 636, 637, 638, 639, 640, 641, 642, 643, 644, 645, 646, 647, 648, 649, 650, 651, 652, 653, 654, 655, 656, 657, 658, 659, 660, 661, 662, 663, 664, 665, 666, 667, 668, 669, 670, 671, 672, 673, 674, 675, 676, 677, 678, 679, 680, 681, 682, 683, 684, 685, 686, 687, 688, 689, 690, 691, 692, 693, 694, 695, 696, 697, 698, 699, 700, 701, 702, 703, 704, 705, 706, 707, 708, 709, 710, 711, 712, 713, 714, 715, 716, 717, 718, 719, 720, 721, 722, 723, 724, 725, 726, 727, 728, 729, 730, 731, 732, 733, 734, 735, 736, 737, 738, 739, 740, 741, 742, 743, 744, 745, 746, 747, 748, 749, 750, 751, 752, 753, 754, 755, 756, 757, 758, 759, 760, 761, 762, 763, 764, 765, 766, 767, 768, 769, 770, 771, 772, 773, 774, 775, 776, 777, 778, 779, 780, 781, 782, 783, 784, 785, 786, 787, 788, 789, 790, 791, 792, 793, 794, 795, 796, 797, 798, 799, 800, 801, 802, 803, 804, 805, 806, 807, 808, 809, 810, 811, 812, 813, 814, 815, 816, 817, 818, 819, 820, 821, 822, 823, 824, 825, 826, 827, 828, 829, 830, 831, 832, 833, 834, 835, 836, 837, 838, 839, 840, 841, 842, 843, 844, 845, 846, 847, 848, 849, 850, 851, 852, 853, 854, 855, 856, 857, 858, 859, 860, 861, 862, 863, 864, 865, 866, 867, 868, 869, 870, 871, 872, 873, 874, 875, 876, 877, 878, 879, 880, 881, 882, 883, 884, 885, 886, 887, 888, 889, 890, 891, 892, 893, 894, 895, 896, 897, 898, 899, 900, 901, 902, 903, 904, 905, 906, 907, 908, 909, 910, 911, 912, 913, 914, 915, 916, 917, 918, 919, 920, 921, 922, 923, 924, 925, 926, 927, 928, 929, 930, 931, 932, 933, 934, 935, 936, 937, 938, 939, 940, 941, 942, 943, 944, 945, 946, 947, 948, 949, 950, 951, 952, 953, 954, 955, 956, 957, 958, 959, 960, 961, 962, 963, 964, 965, 966, 967, 968, 969, 970, 971, 972, 973, 974, 975, 976, 977, 978, 979, 980, 981, 982, 983, 984, 985, 986, 987, 988, 989, 990, 991, 992, 993, 994, 995, 996, 997, 998, 999, 1000

