



LANDSCAPE CALCULATIONS:

PARKING LOT ADDITION TO PROPERTY:  
Parking lot screening required and shown.

Parking lot trees:

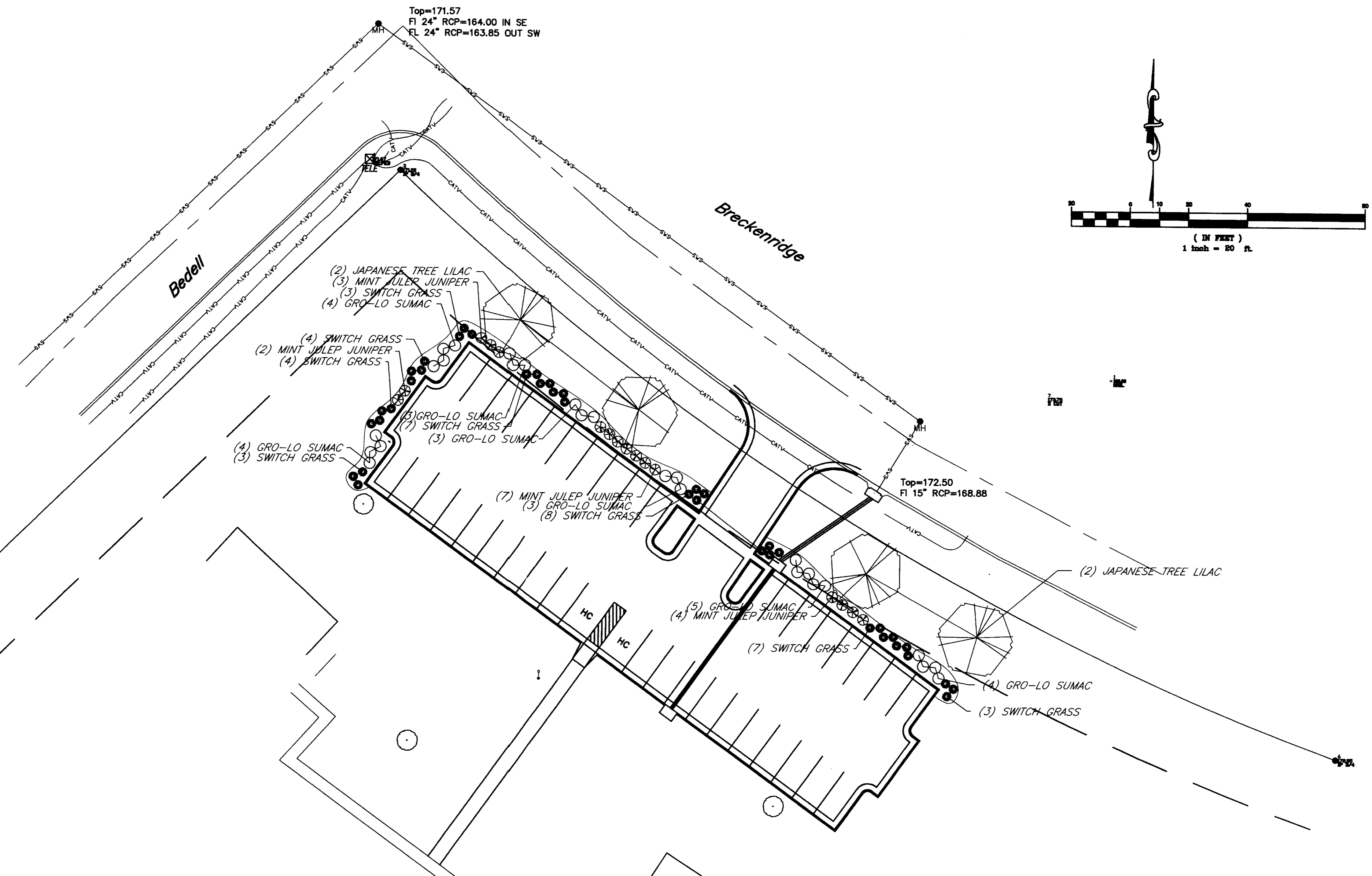
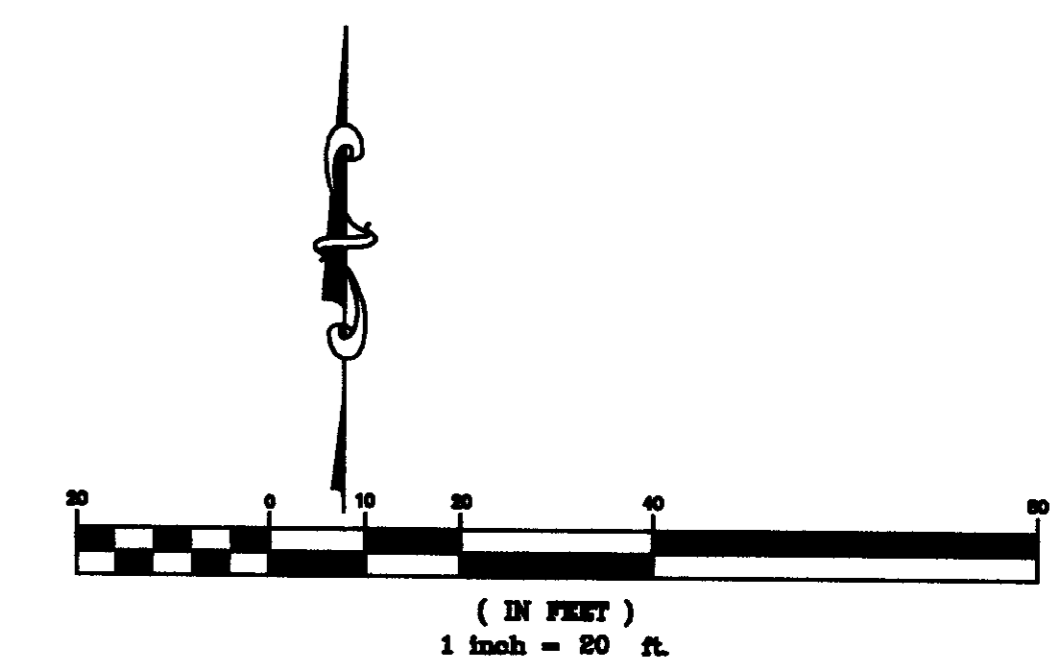
1 shade tree required per 20 spaces.  
39 Parking Spaces = 2 shade trees req.

Shown: 4 Ornamental Trees

Legal Description:  
Lot 1 Block 6 Quail Meadows Addition

Address:  
9100 E. Harry

Top=171.57  
Fl 24" RCP=164.00 IN SE  
Fl 24" RCP=163.85 OUT SW



PLANT SCHEDULE

BROADLEAF DECIDUOUS

QUANTITY	SCIENTIFIC NAME	COMMON NAME	PLANTING SIZE	COMMENTS
4	<i>Syringa reticulata</i>	JAPANESE TREE LILAC	1 1/2"-Cal	

CONIFER EVERGREEN

QUANTITY	SCIENTIFIC NAME	COMMON NAME	PLANTING SIZE	COMMENTS
16	<i>Juniperus chinensis 'Mint Julep'</i>	MINT JULEP JUNIPER	5-Gal	

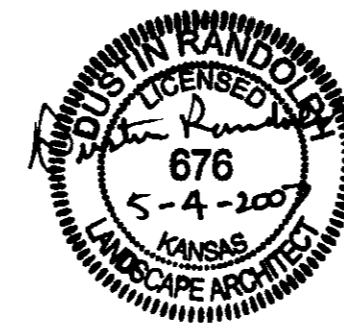
DECIDUOUS SHRUBS/GRASSES

QUANTITY	SCIENTIFIC NAME	Common Name	PLANTING SIZE	COMMENTS
26	<i>Rhus aromatica</i>	FRAGRANT SUMAC	5-Gal	
39	<i>Panicum virgatum 'Shenandoah'</i>	SWITCH GRASS	3-Gal	

DP-53 PARCEL 9 (PORTION)

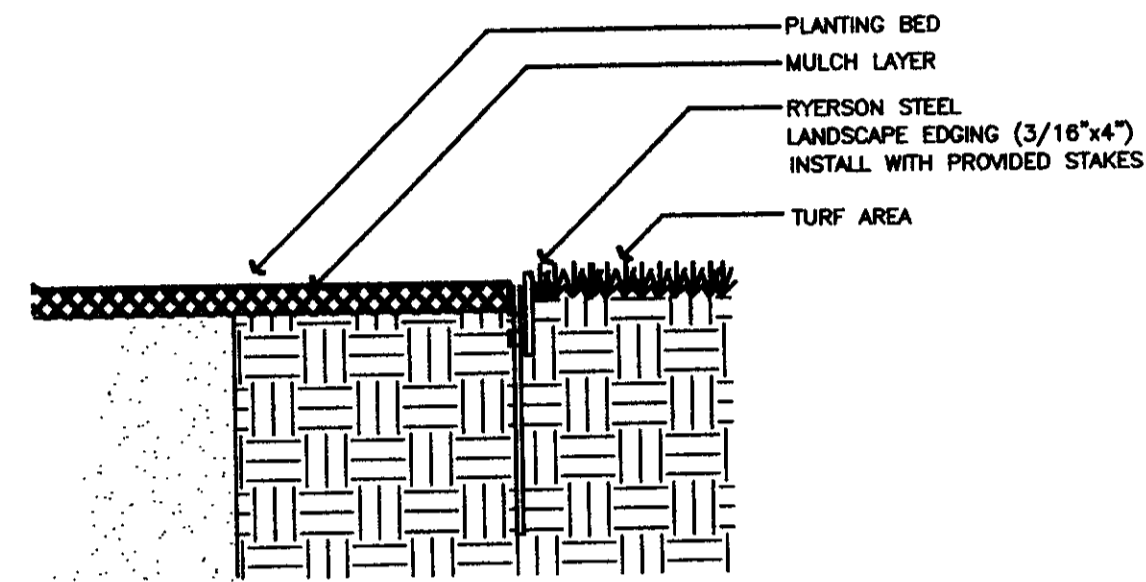
LANDSCAPE PLAN

APPROVED 05/17/07 BY DB  
SHEET 1 OF 2  
PARKING LOT ONLY  
MAPD Copy 1 of 2

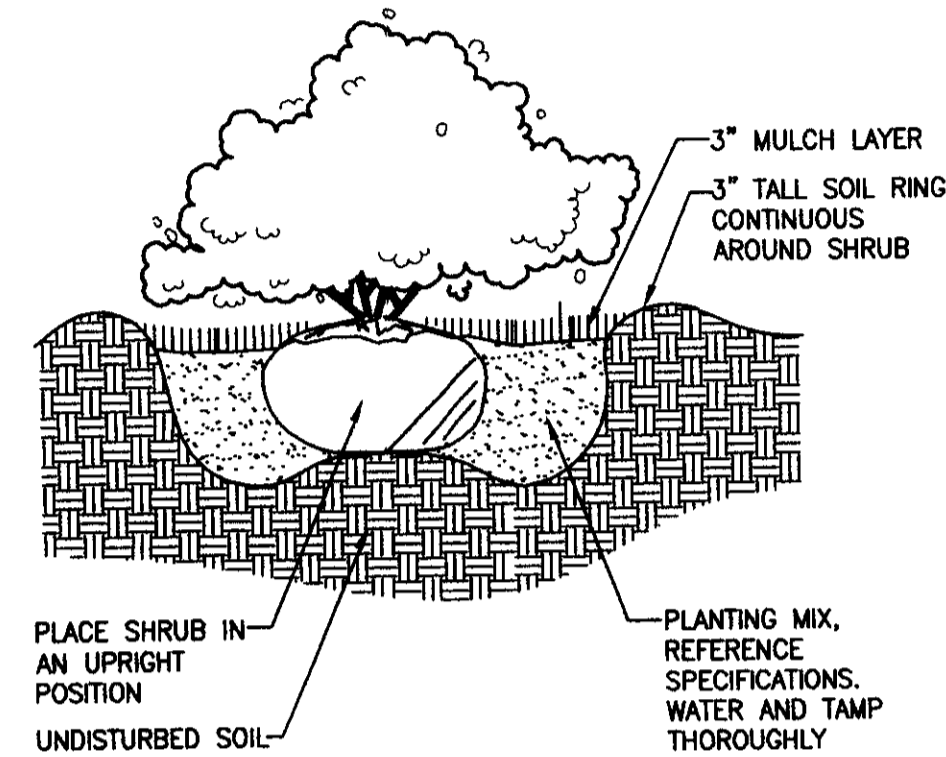


**LANDWORKS**  
Studio  
LANDWORKS STUDIO LLC  
P.O. BOX 5783  
OLATHE, KANSAS  
66063

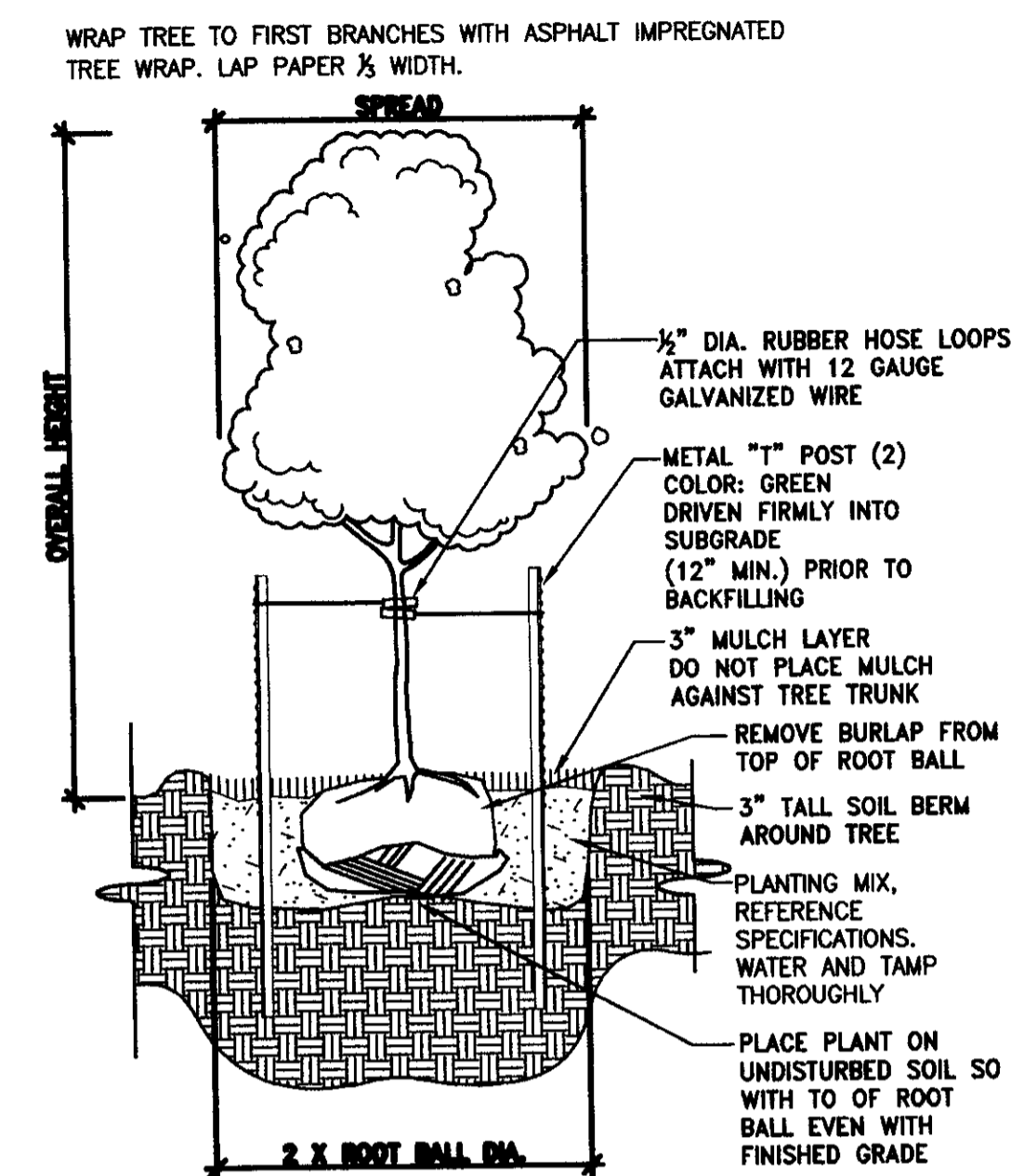
Claremont Apartments Landscape Plan Wichita, Kansas			
<b>kemiller</b> engineering	PROJECT NUMBER		
	KEM NO. 06106	FILE landscape	DATE 5/07
DESIGN CLM	DRAWN CLM	REVISED	SHEET 1 OF 2
518 S. Market, Wichita, KS 67202		316/264-0242	



**1 EDGING DETAIL**  
NO SCALE



**2 SHRUB PLANTING**  
 $\frac{3}{4}'' = 1'-0''$



**3 TREE PLANTING**  
 $\frac{3}{8}'' = 1'-0''$

**LANDSCAPE NOTES**

- GENERAL NOTES:**
1. PRIOR TO BEGINNING ANY WORK ON THE SITE, THE CONTRACTOR SHALL CONTACT THE OFFICE OF THE OWNER AND THE ARCHITECT/LANDSCAPE ARCHITECT FOR SPECIFIC INSTRUCTIONS RELEVANT TO THE SEQUENCING OF WORK.
  2. LANDSCAPE CONTRACTOR SHALL PROVIDE ALL LABOR, MATERIALS AND SERVICE NECESSARY TO FURNISH AND INSTALL PLANTINGS AS SPECIFIED HEREIN AND AS SHOWN ON THE PLANS.
  3. NO MATERIAL SUBSTITUTIONS SHALL BE MADE WITHOUT THE LANDSCAPE ARCHITECT'S APPROVAL.
  4. LANDSCAPE QUANTITIES ARE PROVIDED FOR INFORMATION ONLY. LANDSCAPE CONTRACTOR SHALL BE RESPONSIBLE FOR VERIFYING PLANT QUANTITIES ON THE PLANTING PLAN.
  5. REPORT ANY DISCREPANCIES TO THE LANDSCAPE ARCHITECT IMMEDIATELY.

- SITE PREPARATION AND EARTHWORK:**
1. CONTRACTOR SHALL LOCATE ALL UTILITIES BEFORE COMMENCING WORK. COORDINATE UTILITY LOCATIONS WITH GENERAL CONTRACTOR AND LOCAL UTILITY LOCATOR. CONTRACTOR SHALL BE RESPONSIBLE FOR THE REPAIR OF DAMAGED UTILITIES RESULTING FROM LANDSCAPE OPERATIONS.
  2. GENERAL CONTRACTOR SHALL PROVIDE 6" OF CLEAN SHREDDED TOPSOIL TO THE SITE. ALL FINISH GRADING SHALL BE DONE BY LANDSCAPE CONTRACTOR.
  3. WHEN CLAY SOIL IS ENCOUNTERED IN THE ESTABLISHMENT OF THE LAWN OR THE INSTALLATION OF PLANT MATERIAL IT SHALL BE IMPROVED WITH THE ADDITION OF GYPSUM IN ACCORDANCE WITH STANDARD TRADE PRACTICE.
  4. PROTECT ALL EXISTING PLANT MATERIAL UNLESS NOTED TO BE REMOVED.

- PLANTING PREPARATION:**
1. COVER ALL PLANTING BEDS WITH 1" DEPTH OF COMPOSTED COTTON BOLL MULCH AND TILL TO A DEPTH OF 6".
  2. BACKFILL ALL ALL PLANTED MATERIALS WITH A MIX OF 1/2 COTTON BOLL COMPOST AND 1/2 EXISTING SOIL. ADD LOCALLY AVAILABLE SLOW RELEASE STARTER FERTILIZER TO BACKFILL MIX AS PER MFRS. RECOMMENDATIONS.

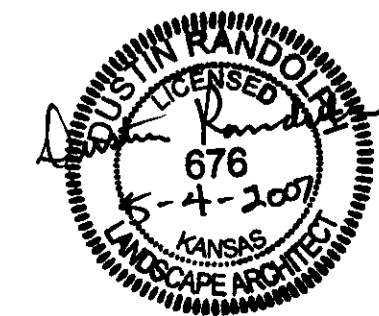
- PLANTING MATERIALS:**
1. ALL PLANT MATERIAL SHALL BE WELL FORMED, HEALTHY AND DISEASE FREE. PLANT MATERIAL SHALL CONFORM TO THE AMERICAN ASSOCIATION OF NURSERYMAN "AMERICAN STANDARDS OF NURSERY STOCK"
  2. PROTECT ALL PLANTS FROM DRYING.
  3. ALL PLANT LOCATIONS ARE APPROXIMATE, ADJUST AS NECESSARY TO AVOID CONFLICTS.
  4. INSTALL ALL PLANT MATERIALS AS PER DETAILS. WATER AND TAMP ALL PLANTS IN.
  6. EDGING SHALL BE LOCALLY AVAILABLE STEEL EDGING INSTALLED AS PER MFR. RECOMMENDATIONS.
  7. INSTALL A PERMEABLE WEED BARRIER AND 3" OF SHREDDED CYPRESS MULCH IN ALL PLANTING BEDS.
  8. PROVIDE 3" DEPTH OF CYPRESS MULCH AROUND ALL ALL TREES LOCATED IN TURF AREAS.
  9. TREAT ALL PLANTING BEDS WITH A PRE-EMERGENT HERBICIDE PRIOR TO MULCH PLACEMENT. DO NOT APPLY HERBICIDE TO PERENNIALS.

- MAINTENANCE AND CLEAN UP:**
1. THE CONTRACTOR SHALL PROVIDE ALL WATER, WATERING DEVICES, AND LABOR NEEDED TO IRRIGATE PLANT MATERIALS UNTIL ACCEPTANCE OF THE PROJECT. THE CONTRACTOR SHALL PROVIDE ENOUGH WATER TO MAINTAIN PLANTS IN A HEALTHY CONDITION.
  2. REMOVE ALL RUBBISH AND DEBRIS FROM SITE AND LEAVE THE AREA IN A NEAT CLEAN CONDITION EACH DAY. REMOVE AND LEGALLY DESPOSE OF ALL EXCESS SOIL AND DEBRIS.
  3. RE-ESTABLISH TURF IN AREAS DISTURBED PLANTING WORK.

- INSPECTION, WARRANTIES AND GUARANTEE:**
1. AT THE COMPLETION OF PLANTING OPERATIONS ALL PLANTS SHALL BE INSPECTED BY THE OWNER AND LANDSCAPE ARCHITECT. LANDSCAPE CONTRACTOR SHALL REPLACE ALL PLANTS NOT IN A HEALTHY CONDITION AT NO EXPENSE TO THE OWNER.
  3. LANDSCAPE CONTRACTOR SHALL PROVIDE OWNER A WRITTEN MAINTENANCE SCHEDULE UPON PROJECT COMPLETION.
  4. GUARANTEE ALL TREES AND SHRUBS FOR ONE YEAR FOLLOWING PROJECT ACCEPTANCE. DURING THE GUARANTEE PERIOD THE CONTRACTOR SHALL REPLACE DEAD TREES OR SHRUBS UPON NOTIFICATION. LIMIT ONE REPLACEMENT PER PLANT. THE CONTRACTOR SHALL NOT BE RESPONSIBLE FOR REPLACEMENT OF PLANT MATERIAL THAT HAS DIED DO TO VANDALISM, IMPROPER MAINTENANCE BY OWNER, OR ACTS OF GOD.

DP-53 PARCEL 9 (PORTION)  
**LANDSCAPE PLAN**

DATE 05/10/07 BY DS  
SHEET 2 OF 2  
PARKING LOT ONLY  
MAPD Copy 1 of 2

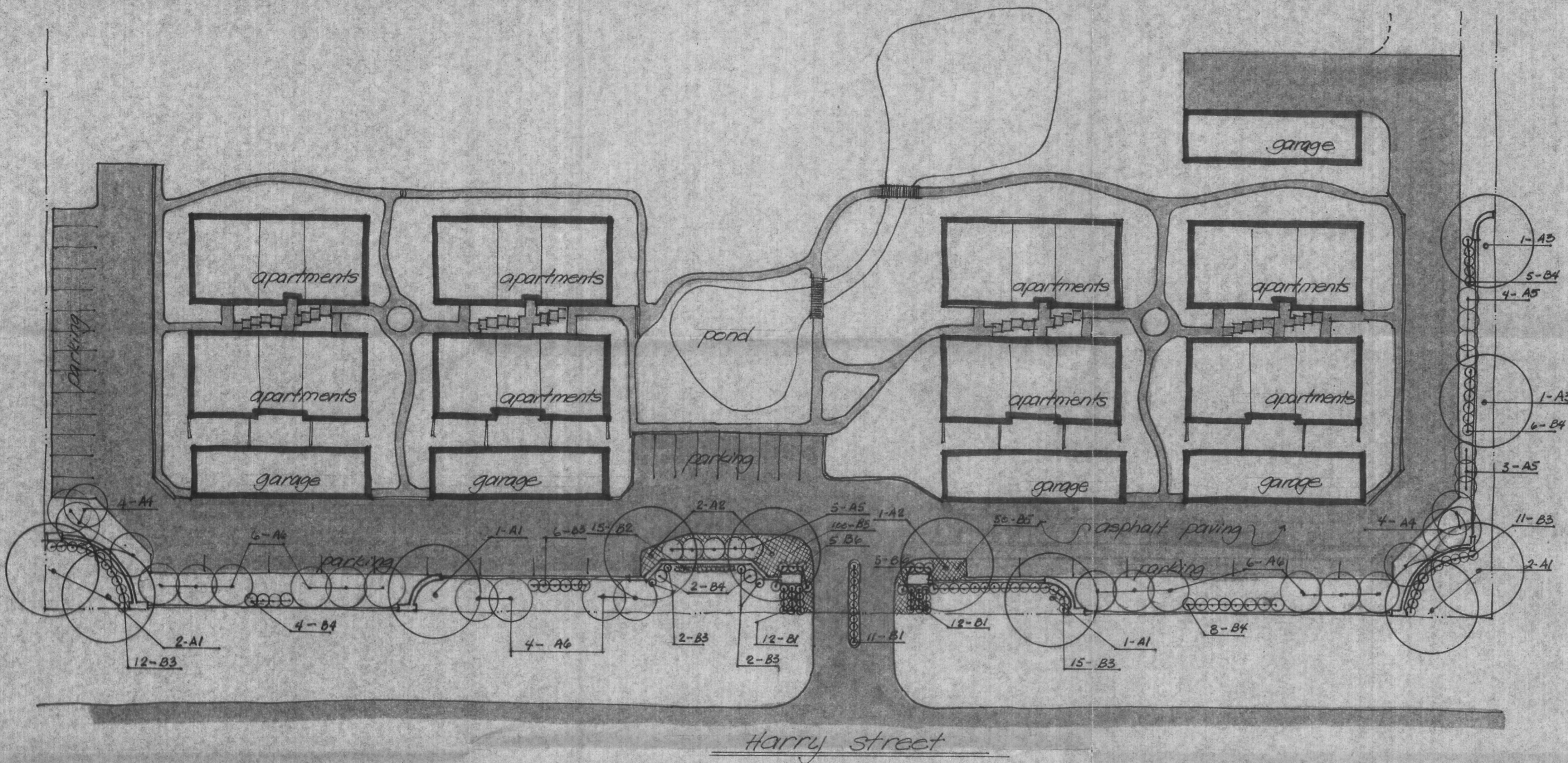


**LANDWORKS**  
Studio  
LANDWORKS STUDIO LLC  
P.O. BOX 3783  
OLATHE, KANSAS  
66063

Claremont Apartments Landscape Plan Wichita, Kansas			
PROJECT NUMBER			
kemiller engineering	KEM NO. 06106	FILE landscape	DATE 5/07
	DESIGN CLM	DRAWN CLM	REVISED
SHEET 2 OF 2			SHEET L2
OF 2			2
316/284-0242		316/284-0242	

316 S. Market  
Wichita, KS 67202





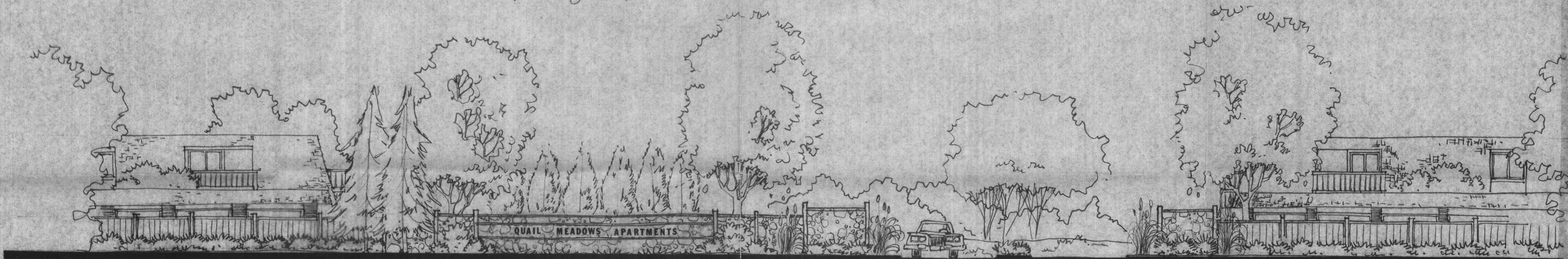
### plant list

code	quantity	plant name	method planted
A1	6	London planetree	BB - 14-1 1/2"
A2	3	thornless Honey Locust	14-1 1/2" BB
A3	2	Japanese pagodatree	BB - 14-1 1/2"
A4	8	pistacia	BB - 14-1 1/2"
A5	12	kefelereri juniper	BB - 5-6"
A6	16	Austrian pine	BB - 5-6"
B1	35	Compact pfitzer Juniper	BB - 18-24"
B2	15	Sargents juniper	BB Cont.
B3	48	Manhattan Euonymus	BB - 15-18"
B4	25	Firethorn pyracantha	BB - 24-30"
B5	150	purple leaf Honeysuckle	2 1/2" pots
B6	10	pampas grass	field clump

## plan view phase I

illustrating landscape plan for required planting strip

↑ scale 1" = 30'-0"



## partial elevation

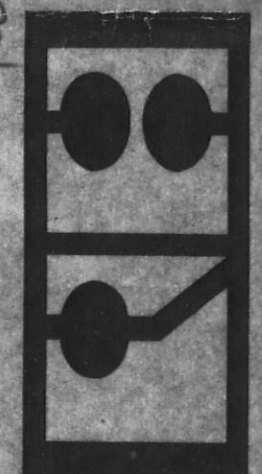
illustrating entrance to apartment complex  
scale 1/8" = 1'-0"

OFFICE COPY  
DO NOT REMOVE

APPROVED IN  
ASSOCIATION WITH

DP-53  
12/19/75 R.D.Y.

**RODGER A BROOKS - ARCHITECT**  
 Professional Association  
 EAST SIDE FINANCIAL CENTER  
 7701 EAST KELLOGG AVENUE SUITE 725  
 WICHITA KANSAS 67207 (316) 894-0147



3/20/1  
1  
of 1

planting plan prep by  
 Bill G. Long - Land Arch.  
 17 Oct 1975  
 Planting Plan for Landscape Green  
 Quail meadows apartment project  
 lot 1 - Second addition, Wichita, Ks.

Legal Description

Tract I - Lot 1, Block G, Qual Meadows  
Second Addition to Wichita, Sedgwick Co.  
Kansas

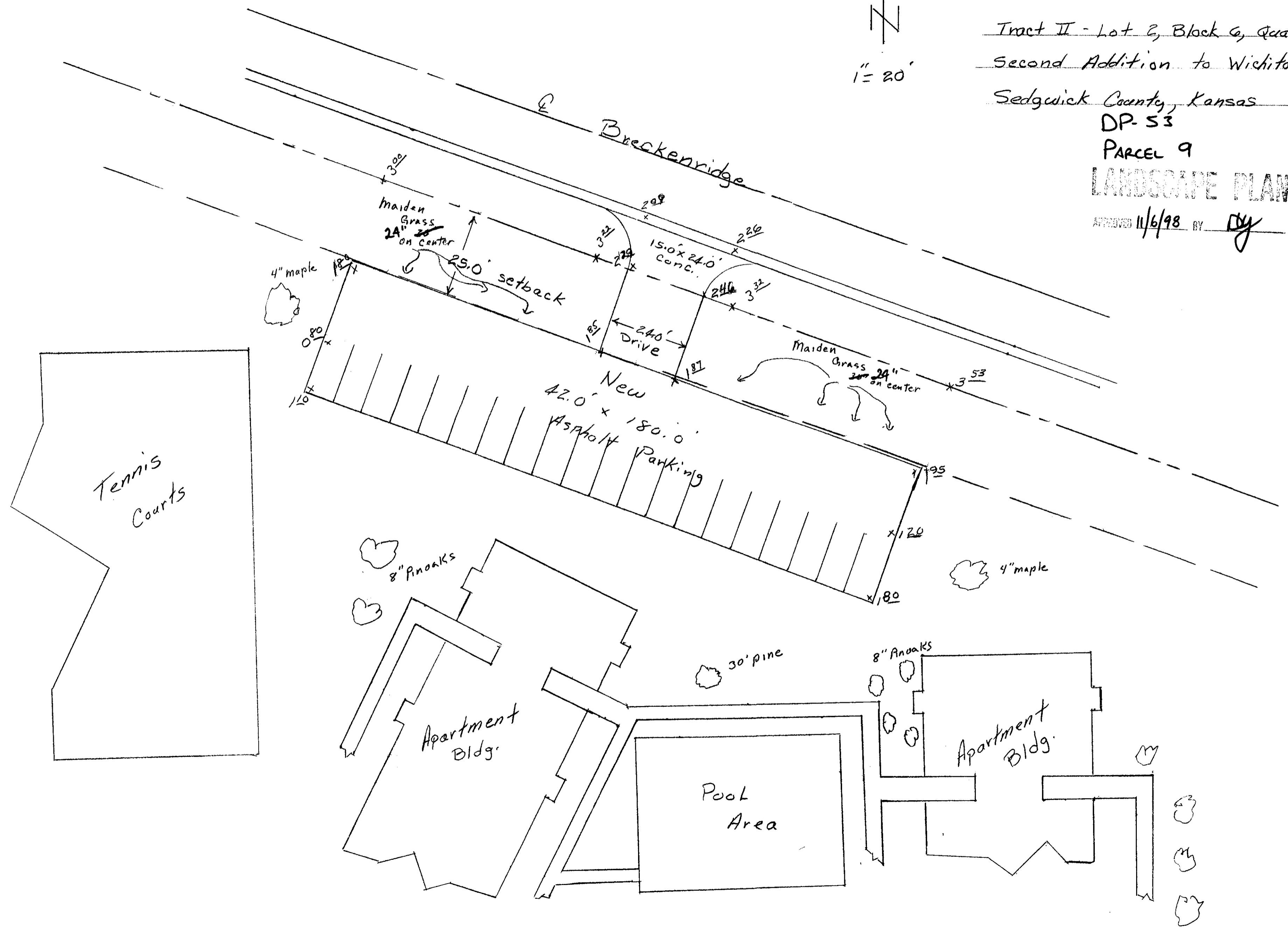
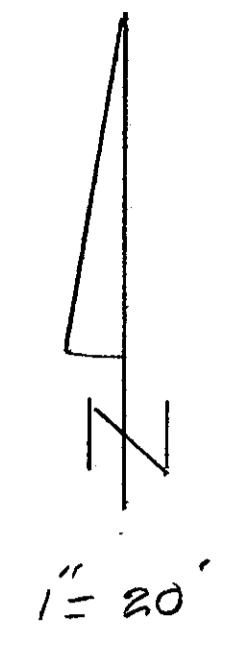
Tract II - Lot 2, Block G, Qual Meadows  
Second Addition to Wichita,  
Sedgwick County, Kansas

DP-53

PARCEL 9

LANDSCAPE PLAN

APPROVED 11/6/98 BY *[Signature]*





LANDSCAPE CALCULATIONS:

PARKING LOT ADDITION TO PROPERTY:  
 Parking lot screening required and shown.

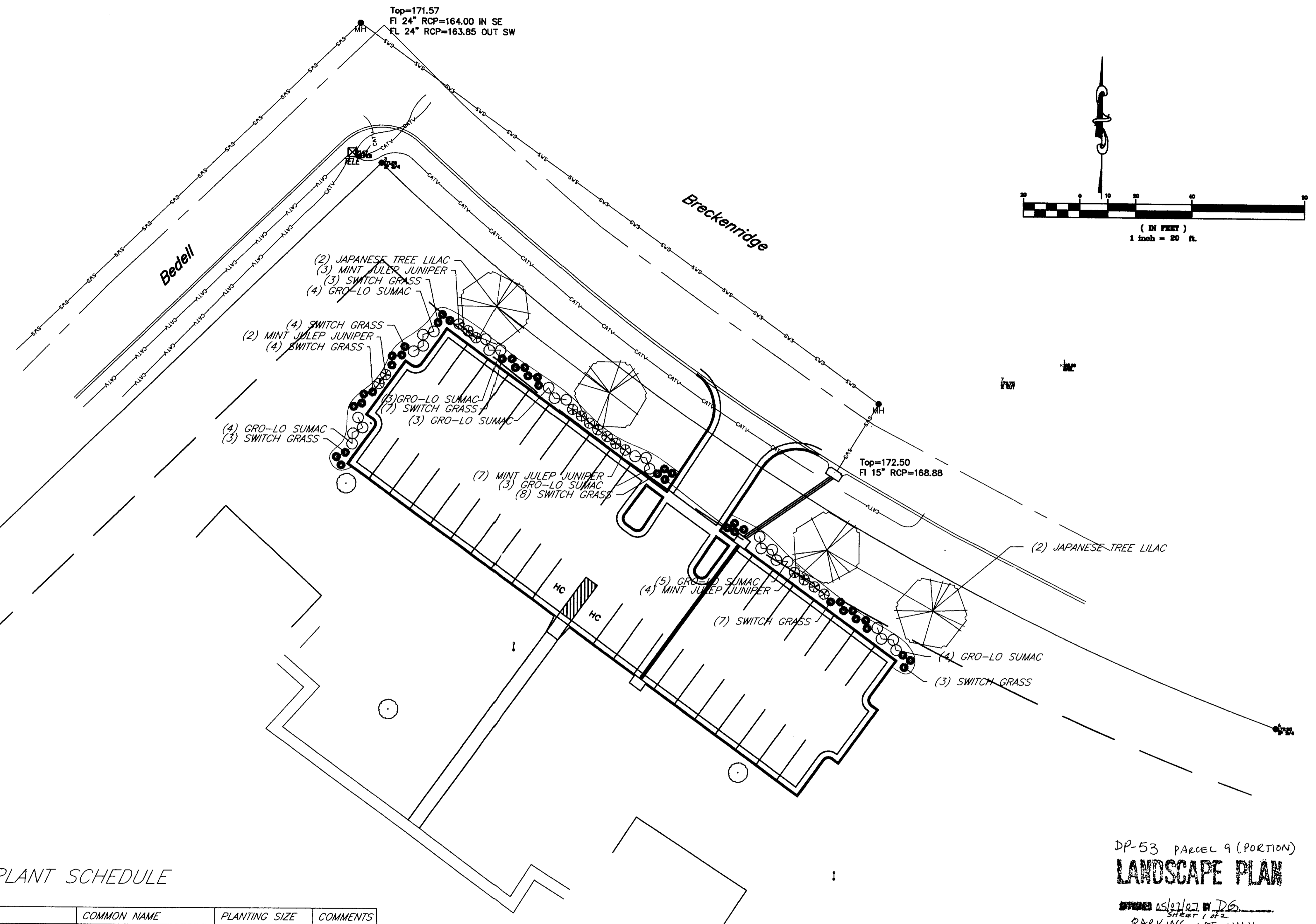
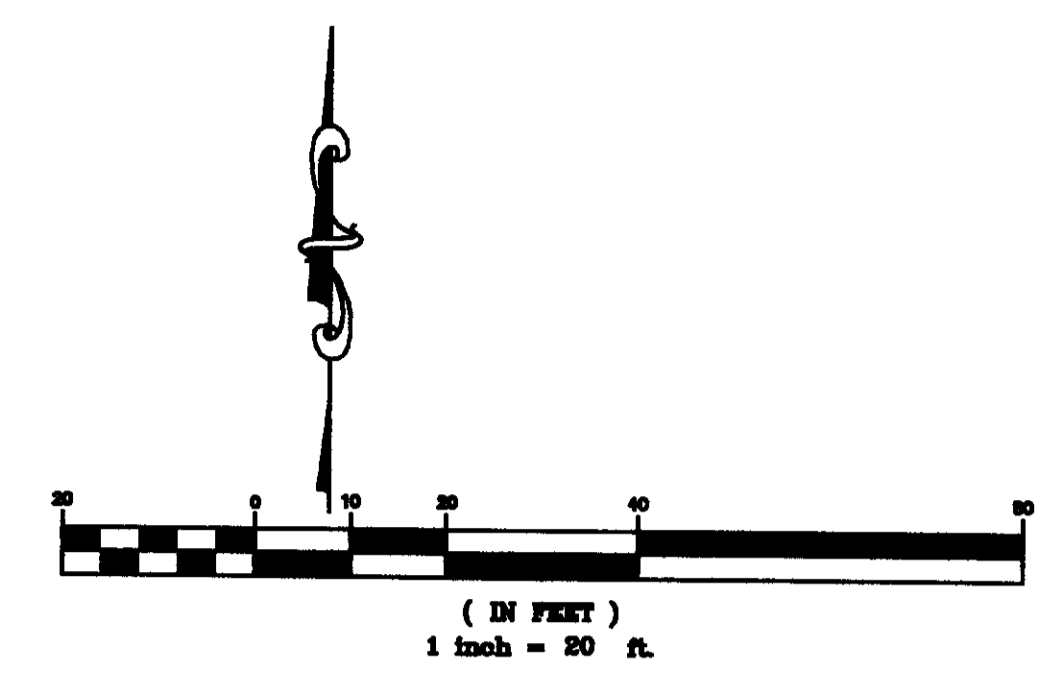
Parking lot trees:

1 shade tree required per 20 spaces.  
 39 Parking Spaces = 2 shade trees req.

Shown: 4 Ornamental Trees

Legal Description:  
 Lot 1 Block 6 Quail Meadows Addition

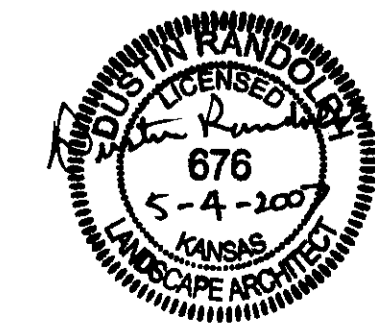
Address:  
 9100 E. Harry



PLANT SCHEDULE

BROADLEAF DECIDUOUS				
QUANTITY	SCIENTIFIC NAME	COMMON NAME	PLANTING SIZE	COMMENTS
4	<i>Syringa reticulata</i>	JAPANESE TREE LILAC	1 1/2"-Gal	
CONIFER EVERGREEN				
QUANTITY	SCIENTIFIC NAME	COMMON NAME	PLANTING SIZE	COMMENTS
16	<i>Juniperus chinensis 'Mint Julep'</i>	MINT JULEP JUNIPER	5-Gal	
DECIDUOUS SHRUBS/GRASSES				
QUANTITY	SCIENTIFIC NAME	Common Name	PLANTING SIZE	COMMENTS
26	<i>Rhus aromatica</i>	FRAGRANT SUMAC	5-Gal	
39	<i>Panicum virgatum 'Shenandoah'</i>	SWITCH GRASS	3-Gal	

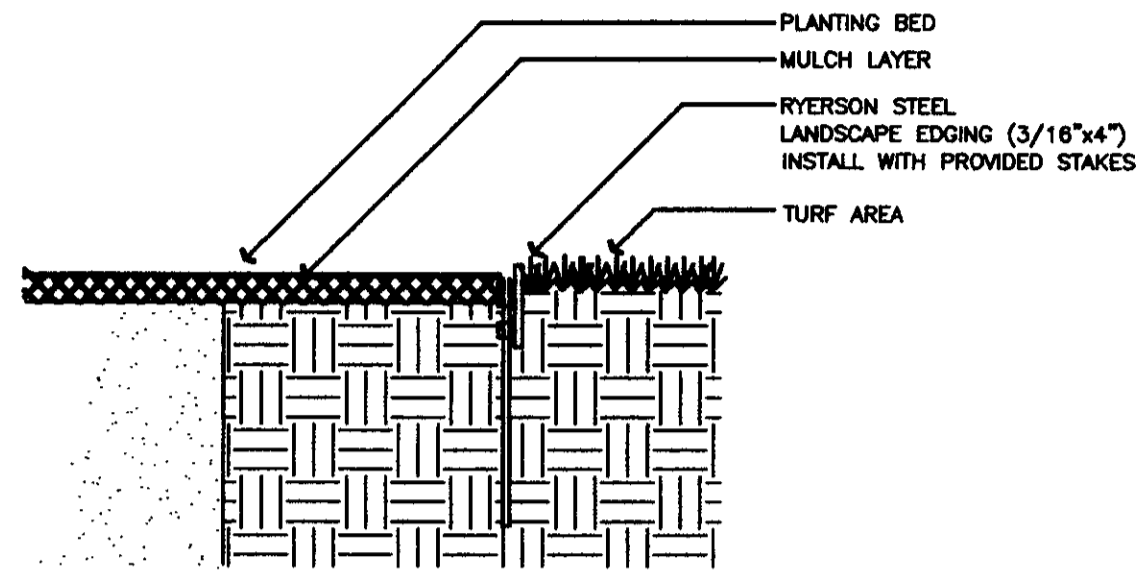
DP-53 PARCEL 9 (PORTION)  
**LANDSCAPE PLAN**  
 DESIGNED AND DRAWN BY D.G.  
 SHEET 1 OF 2  
 PARKING LOT ONLY  
 MAPD Copy 1 of 2



Claremont Apartments  
 Landscape Plan  
 Wichita, Kansas

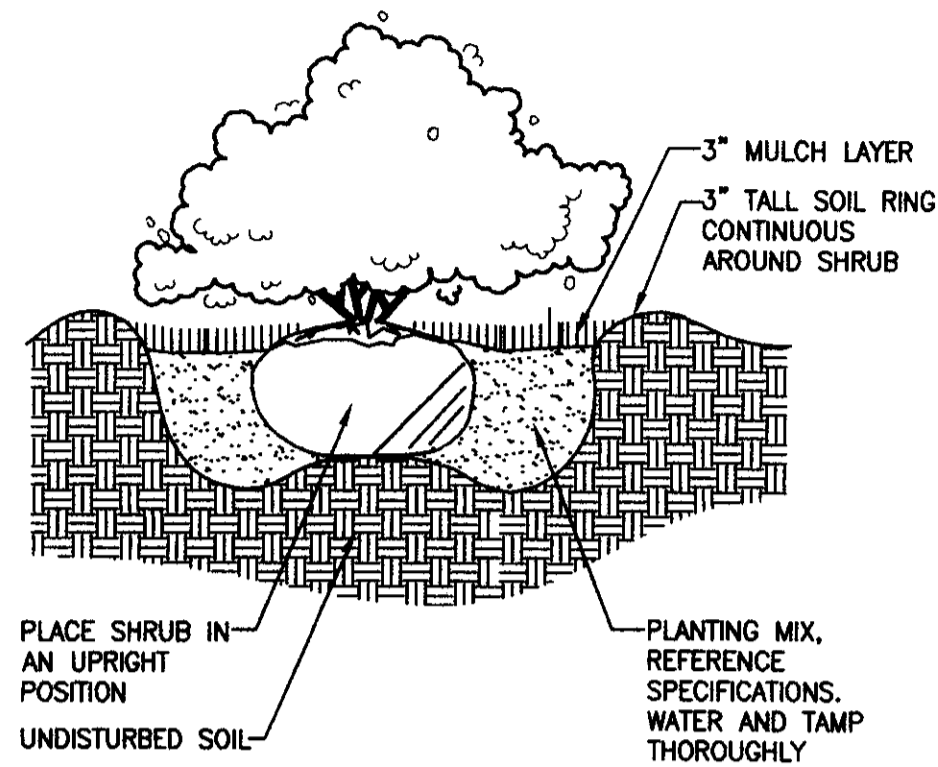
	PROJECT NUMBER			
	KEM NO. 06106	FILE landscape	DATE 5/07	SHEET 1
DESIGN CLM	DRAWN CLM	REVISED	OF 2	

510 S. Market, Wichita, KS 67202      316/264-0242



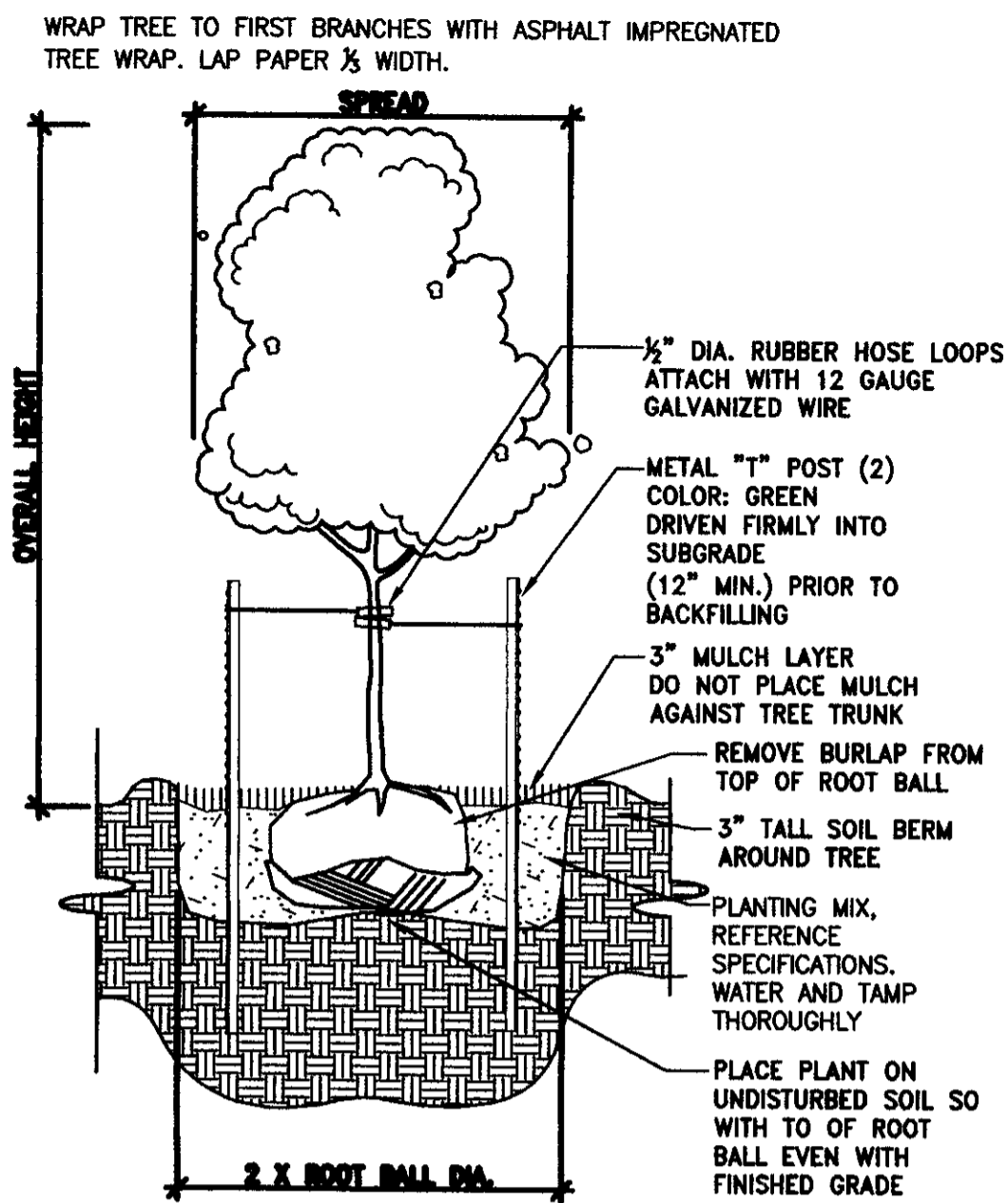
**1 EDGING DETAIL**

NO SCALE



**2 SHRUB PLANTING**

3/4" = 1'-0"



**3 TREE PLANTING**

3/8" = 1'-0"

**LANDSCAPE NOTES**

**GENERAL NOTES:**

1. PRIOR TO BEGINNING ANY WORK ON THE SITE, THE CONTRACTOR SHALL CONTACT THE OFFICE OF THE OWNER AND THE ARCHITECT/LANDSCAPE ARCHITECT FOR SPECIFIC INSTRUCTIONS RELEVANT TO THE SEQUENCING OF WORK.
2. LANDSCAPE CONTRACTOR SHALL PROVIDE ALL LABOR, MATERIALS AND SERVICE NECESSARY TO FURNISH AND INSTALL PLANTINGS AS SPECIFIED HEREIN AND AS SHOWN ON THE PLANS.
3. NO MATERIAL SUBSTITUTIONS SHALL BE MADE WITHOUT THE LANDSCAPE ARCHITECT'S APPROVAL.
4. LANDSCAPE QUANTITIES ARE PROVIDED FOR INFORMATION ONLY. LANDSCAPE CONTRACTOR SHALL BE RESPONSIBLE FOR VERIFYING PLANT QUANTITIES ON THE PLANTING PLAN.
5. REPORT ANY DISCREPANCIES TO THE LANDSCAPE ARCHITECT IMMEDIATELY.

**SITE PREPARATION AND EARTHWORK:**

1. CONTRACTOR SHALL LOCATE ALL UTILITIES BEFORE COMMENCING WORK. COORDINATE UTILITY LOCATIONS WITH GENERAL CONTRACTOR AND LOCAL UTILITY LOCATOR. CONTRACTOR SHALL BE RESPONSIBLE FOR THE REPAIR OF DAMAGED UTILITIES RESULTING FROM LANDSCAPE OPERATIONS.
2. GENERAL CONTRACTOR SHALL PROVIDE 6" OF CLEAN SHREDDED TOPSOIL TO THE SITE. ALL FINISH GRADING SHALL BE DONE BY LANDSCAPE CONTRACTOR.
3. WHEN CLAY SOIL IS ENCOUNTERED IN THE ESTABLISHMENT OF THE LAWN OR THE INSTALLATION OF PLANT MATERIAL IT SHALL BE IMPROVED WITH THE ADDITION OF GYPSUM IN ACCORDANCE WITH STANDARD TRADE PRACTICE.
4. PROTECT ALL EXISTING PLANT MATERIAL UNLESS NOTED TO BE REMOVED.

**PLANTING PREPARATION:**

1. COVER ALL PLANTING BEDS WITH 1" DEPTH OF COMPOSTED COTTON BOLL MULCH AND TILL TO A DEPTH OF 6".
2. BACKFILL ALL ALL PLANTED MATERIALS WITH A MIX OF 1/3 COTTON BOLL COMPOST AND 2/3 EXISTING SOIL. ADD LOCALLY AVAILABLE SLOW RELEASE STARTER FERTILIZER TO BACKFILL MIX AS PER MFRS. RECOMMENDATIONS.

**PLANTING MATERIALS:**

1. ALL PLANT MATERIAL SHALL BE WELL FORMED, HEALTHY AND DISEASE FREE. PLANT MATERIAL SHALL CONFORM TO THE AMERICAN ASSOCIATION OF NURSERYMAN "AMERICAN STANDARDS OF NURSERY STOCK"
2. PROTECT ALL PLANTS FROM DRYING.
3. ALL PLANT LOCATIONS ARE APPROXIMATE, ADJUST AS NECESSARY TO AVOID CONFLICTS.
4. INSTALL ALL PLANT MATERIALS AS PER DETAILS. WATER AND TAMP ALL PLANTS IN.
6. EDGING SHALL BE LOCALLY AVAILABLE STEEL EDGING INSTALLED AS PER MFR. RECOMMENDATIONS.
7. INSTALL A PERMEABLE WEED BARRIER AND 3" OF SHREDDED CYPRESS MULCH IN ALL PLANTING BEDS.
8. PROVIDE 3" DEPTH OF CYPRESS MULCH AROUND ALL ALL TREES LOCATED IN TURF AREAS.
9. TREAT ALL PLANTING BEDS WITH A PRE-EMERGENT HERBICIDE PRIOR TO MULCH PLACEMENT. DO NOT APPLY HERBICIDE TO PERENNIALS.

**MAINTENANCE AND CLEAN UP:**

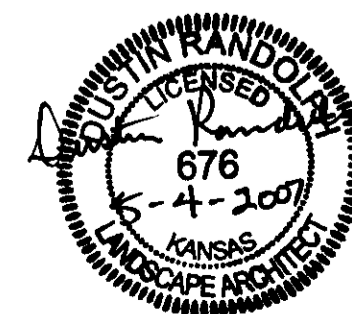
1. THE CONTRACTOR SHALL PROVIDE ALL WATER, WATERING DEVICES, AND LABOR NEEDED TO IRRIGATE PLANT MATERIALS UNTIL ACCEPTANCE OF THE PROJECT. THE CONTRACTOR SHALL PROVIDE ENOUGH WATER TO MAINTAIN PLANTS IN A HEALTHY CONDITION.
2. REMOVE ALL RUBBISH AND DEBRIS FROM SITE AND LEAVE THE AREA IN A NEAT CLEAN CONDITION EACH DAY. REMOVE AND LEGALLY DESPOSE OF ALL EXCESS SOIL AND DEBRIS.
3. RE-ESTABLISH TURF IN AREAS DISTURBED PLANTING WORK.

**INSPECTION, WARRANTIES AND GUARANTEE:**

1. AT THE COMPLETION OF PLANTING OPERATIONS ALL PLANTS SHALL BE INSPECTED BY THE OWNER AND LANDSCAPE ARCHITECT. LANDSCAPE CONTRACTOR SHALL REPLACE ALL PLANTS NOT IN A HEALTHY CONDITION AT NO EXPENSE TO THE OWNER.
3. LANDSCAPE CONTRACTOR SHALL PROVIDE OWNER A WRITTEN MAINTENANCE SCHEDULE UPON PROJECT COMPLETION.
4. GUARANTEE ALL TREES AND SHRUBS FOR ONE YEAR FOLLOWING PROJECT ACCEPTANCE. DURING THE GUARANTEE PERIOD THE CONTRACTOR SHALL REPLACE DEAD TREES OR SHRUBS UPON NOTIFICATION. LIMIT ONE REPLACEMENT PER PLANT. THE CONTRACTOR SHALL NOT BE RESPONSIBLE FOR REPLACEMENT OF PLANT MATERIAL THAT HAS DIED DO TO VANDALISM, IMPROPER MAINTENANCE BY OWNER, OR ACTS OF GOD.

DP-53 PARCEL 9 (PORTION)  
**LANDSCAPE PLAN**

ISSUED 05/11/07 BY DG  
SHEET 2 of 2  
PARKING LOT ONLY  
MAPD Copy 1 of 2



**LANDWORKS**  
*Studio*  
LANDWORKS STUDIO LLC  
P.O. BOX 3783  
OLATHE, KANSAS  
66063



516 S. Market,  
Wichita, KS 67202

316/284-0242

Claremont Apartments  
**Landscape Plan**  
Wichita, Kansas

PROJECT NUMBER			
KEM NO. 06106	FILE landscape	DATE 5/07	SHEET L2
DESIGN CLM	DRAWN CLM	REVISED	OF 2