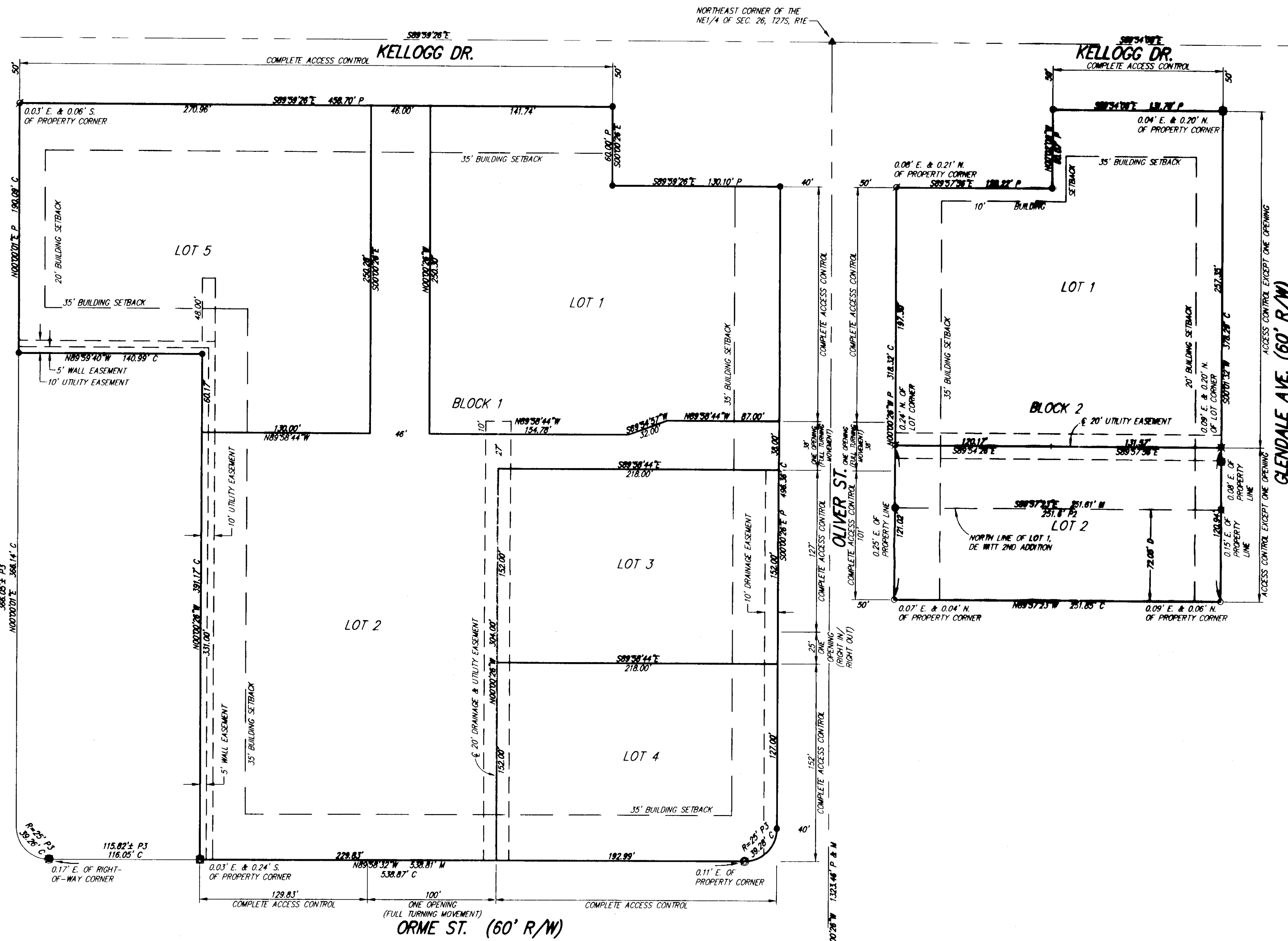


6-12-09  
June 2009-19

# ANN WALENTA COMMERCIAL ADDITION

Wichita, Sedgwick County, Kansas

PERSHING AVE. (76' R/W)



**SURVEY MARKER LEGEND**

- 1/2" IRON PIPE IN THIMBLE (FOUND - ORIGIN UNKNOWN)
- SQUARE BOLT (FOUND - ORIGIN UNKNOWN)
- ▲ 1/2" CAPPED REBAR IN CROSS (FOUND - ORIGIN UNKNOWN)
- ⊗ 1/2" REBAR (FOUND - ORIGIN UNKNOWN)
- MAG NAIL (FOUND - ORIGIN UNKNOWN)
- ⊗ PK NAIL IN A RAILROAD TIE (FOUND - ORIGIN UNKNOWN)
- ⊗ 1/2" REBAR W/REBAR W/BAUGHMAN CAP (FOUND)
- 1" IRON PIPE (FOUND - ORIGIN UNKNOWN)
- 1/2" IRON PIPE (FOUND - ORIGIN UNKNOWN)
- 3/4" IRON PIPE IN CONCRETE (FOUND - ORIGIN UNKNOWN)
- ⊗ 1/2" REBAR - SPINNER (FOUND - ORIGIN UNKNOWN)
- 5/8" REBAR W/ACLS CAP (FOUND)
- 5/8" REBAR W/RUGGLES & BOHM CAP (SET)

NOTE: THIS ADDITION IS SUBJECT TO THE CONDITIONS OF OLIVER RETAIL CENTER COMMUNITY UNIT PLAN (CUP 2008-24, DP-261)

BENCH MARK: CHISELED SQUARE ON THE TOP OF CURB AT THE SOUTH CURB RETURN, AT THE NORTH END OF PERSHING ON THE SOUTH SIDE OF E. KELLOGG DR. S. ELEVATION = 1357.61 (NAVD88)

BENCH MARK: CHISELED SQUARE ON THE TOP OF CURB AT THE SOUTH CURB RETURN, AT THE SOUTHWEST CORNER OF GLENDALE AND E. KELLOGG DR. S. ELEVATION = 1350.90 (NAVD88)

State of Kansas) SS  
Sedgwick County)

We, Ruggles & Bohm, P.A., Land Surveyors in aforesaid county and state, do hereby certify that, under the supervision of the undersigned, we have surveyed and platted "ANN WALENTA COMMERCIAL ADDITION", Wichita, Sedgwick County, Kansas, and that the accompanying plat is a true and correct exhibit of the property surveyed, described as follows:

Lots 1 and 2, Block A, AND Lot 1, Block B, Ann Walenta Addition, Wichita, Sedgwick County, Kansas;

The South 30 feet of Lot 14, all of Lots 15, 16, 17, 18, 19, and 20, and the south 24 feet of Lot 21, Block 1, and the South 40 feet of Lot 6, all of Lots 7, 8, 9, 10, 11 and 12, the North 5 feet of Lot 20, and all of Lot 21, Block 2, Kellogg Heights Addition to Wichita, Kansas;

Dellrose Avenue from the south line of Lots 1 and 2, Block A, in said Ann Walenta Addition to the north right-of-way line of Orme Street;

The north 72.05 feet of Lot 1, De Witt 2nd Addition, Wichita, Kansas, Sedgwick County, Kansas;

Elierts Street from the east right-of-way line of Oliver to the west right-of-way line of Glendale Avenue.

All public easements and dedications are hereby vacated by virtue of K.S.A. 12-512(b).

Ruggles & Bohm, P.A.  
Thomas C. Ruggles  
Land Surveyor

Know all men by these presents that we, the undersigned, have caused the land described in the surveyor's certificate to be platted into Lots and Blocks, to be known as "ANN WALENTA COMMERCIAL ADDITION", Wichita Sedgwick County, Kansas. Access Controls as indicated are hereby granted to the appropriate governing body. Utility Easements are hereby granted to the appropriate governing body. The Drainage Easements are hereby granted to the public as indicated for drainage purposes. A drainage plan has been developed for this plat; the property shall remain at established grades, or as modified with the approval of the City Engineer, and unobstructed to allow for the conveyance of storm water.

S.J. Ram, LC, a Kansas limited liability company  
Donald Walenta  
Managing Member

State of Kansas) SS  
Sedgwick County)

The foregoing instrument acknowledged before me, this 2nd day of June, 2009, by Donald Walenta, Managing Member, on behalf of S.J. Ram, LC, a Kansas limited liability company.

Todd S. Heptig  
Notary Public

We the undersigned, holders of a mortgage on a portion of the above described property, do hereby consent to this plat of "ANN WALENTA COMMERCIAL ADDITION", Wichita, Sedgwick County, Kansas.

Thomas J. McGrath  
Senior Vice President

State of Kansas) SS  
Sedgwick County)

The foregoing instrument acknowledged before me this 5th day of June, 2009, by Thomas J. McGrath, Senior Vice President of Emprise Bank, on behalf of the Bank.

My appointment expires 12/31/2012  
Notary Public

This plat of "ANN WALENTA COMMERCIAL ADDITION", Wichita, Sedgwick County, Kansas, has been submitted to and approved by the Wichita-Sedgwick County Metropolitan Area Planning Commission, Wichita, Kansas.

Dated this 5th day of June, 2009.

Wichita-Sedgwick County Metropolitan Area Planning Commission  
Darrell Downing  
Chair  
John L. Schlegel  
Secretary

This plat approved and all dedications shown hereon accepted by the City Council of the City of Wichita, Kansas, this 5th day of June, 2009.

At the Direction of the City Council  
Carl Brewer  
Mayor  
Karen Sublett  
City Clerk

Reviewed in accordance with K.S.A. 58-2005 on this 5th day of June, 2009.  
Deputy County Surveyor

Entered on transfer record this 5th day of June, 2009.  
County Clerk  
Kelly B. Arnold

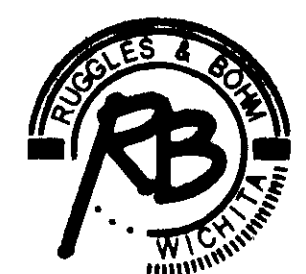
State of Kansas) SS  
Sedgwick County)

This is to certify that this plat has been filed for record in the office of the Register of Deeds, this 5th day of June, 2009, at 10 o'clock A.M., and is duly recorded.

Bill Meek  
Register of Deeds  
Tonya Buckingham  
Deputy



(A) = Assumed Basis of Bearing  
P = Platted (Ann Walenta Addition)  
P2 = Platted (De Witt 2nd Addition)  
P3 = Platted (Kellogg Heights Addition)  
M = Measured  
C = Calculated  
D = Described



Ruggles & Bohm, P.A.  
Engineering, Surveying, Land Planning  
924 North Main  
Wichita, Kansas 67203  
www.rbkansas.com  
(316) 264-8006  
(316) 264-4821 fax  
E-mail: info@rbkansas.com

DWG FILE: SURVEY BASE  
PROJECT NO. 3391P  
APRIL 30, 2009