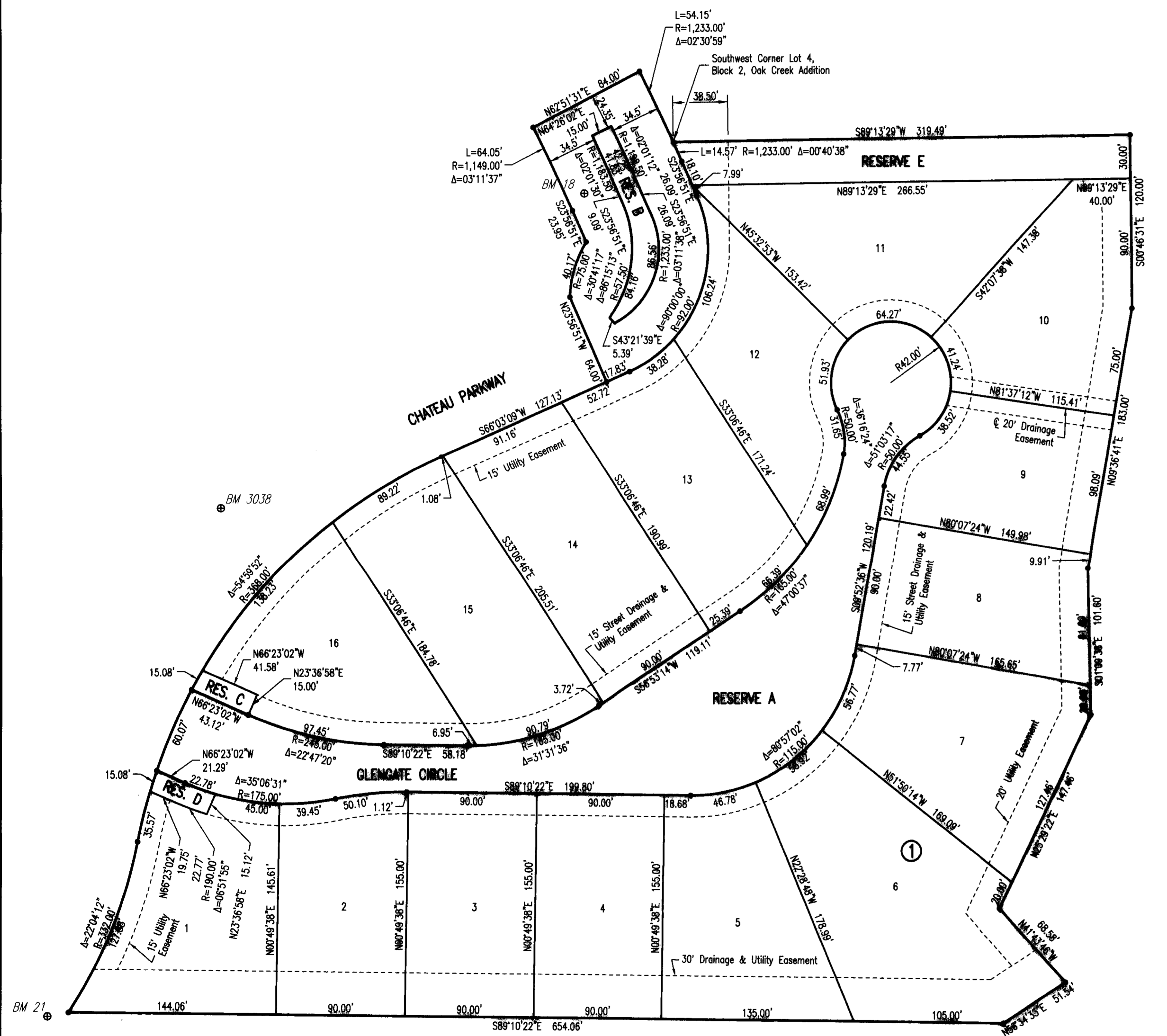


GLENVIEW

AN ADDITION TO WICHITA, SEDGWICK COUNTY, KANSAS

SUB 2008-0024
FINAL TRACING REC'D 3-19-12
FILE COPY



| MINIMUM PAD ELEVATIONS (LOWEST OPENING) SHALL BE AS FOLLOWS: | | |
|--|------------|----------|
| BLOCK | CITY DATUM | N.G.V.D. |
| LOT 6 | 197.6 | 1385.0 |
| LOT 7 | 191.6 | 1379.0 |
| LOTS 8-10 | 197.6 | 1379.0 |

BENCHMARKS

BM 18
 CHISELED "d" ON CENTER FACE CURB INLET ON WEST SIDE CHATEAU PARKWAY, 600' SOUTH OF 21ST ST. NORTH NEAR NORTHWEST CORNER GLENVIEW ADDITION.
 ELEV. = 1378.64 N.G.V.D.

BM 21
 CHISELED "d" ON WEST SIDE OF CONCRETE BASE FOR LIGHT POLE ON EAST SIDE CHATEAU PARKWAY, 1,200'± SOUTH OF 21ST ST. NORTH NEAR SOUTHWEST CORNER GLENVIEW ADDITION.
 ELEV. = 1389.73 N.G.V.D.

BM 3038
 CITY DISC ON WEST TOP OF CURB CHATEAU PARKWAY, 165' NORTH OF GLENVIEW CIRCLE.
 ELEV. = 1384.11 N.G.V.D.

SCALE: 1" = 50'

• = 1/2" REBAR W/PEC CAP UNLESS OTHERWISE NOTED

STATE OF KANSAS }
 COUNTY OF SEDGWICK } SS

WE, PROFESSIONAL ENGINEERING CONSULTANTS, P.A., ENGINEERS AND SURVEYORS IN AFORESAID STATE AND COUNTY, DO HEREBY CERTIFY THAT OF THIS 15TH DAY OF MARCH, 2012, WE HAVE SURVEYED AND PLATTED GLENVIEW, AN ADDITION TO WICHITA, SEDGWICK COUNTY, KANSAS, INTO LOTS, BLOCKS, AND RESERVES, THE SAME BEING DESCRIBED AS FOLLOWS:

LOTS 13, 14, 15, 16, 17, 18, 19, 20, 21, 22, 23, 24, 25, 26, AND 27, BLOCK 1, RESERVE "A" (GLENVIEW CIRCLE), THAT PART OF RESERVE "C" LYING WEST OF THE EAST LINE OF LOT 17 BLOCK 1, EXTENDED N00°46'31"W, TO THE NORTH LINE OF OAK CREEK 3RD, SAID POINT BEING 319.49 FEET EAST OF THE NORTHWEST CORNER OF RESERVE "C" AND RESERVE "D" OF OAK CREEK 3RD AN ADDITION TO WICHITA, SEDGWICK COUNTY, KANSAS.

TOGETHER WITH RESERVES "J" AND "G" AND THE CHATEAU PARKWAY ROUNDABOUT, LYING WITHIN OAK CREEK 2ND AND AN ADDITION TO WICHITA, SEDGWICK COUNTY, KANSAS DESCRIBED AS: BEGINNING AT THE SOUTHWEST CORNER OF LOT 4, BLOCK 2, OAK CREEK; THENCE ALONG SAID CURVE TO THE RIGHT (NON TANGENT), HAVING A RADIUS OF 1,233.00 FEET, A CHORD BEARING OF S24°17'11"E, A CHORD DISTANCE OF 14.57 FEET AND THROUGH A CENTRAL ANGLE OF 00°40'38", AN ARC DISTANCE OF 14.57 FEET; THENCE BEARING S23°56'51"E, A DISTANCE OF 23.95 FEET; THENCE ALONG SAID CURVE TO THE RIGHT (NON TANGENT), HAVING A RADIUS OF 75.00 FEET, A CHORD BEARING OF S25°27'08"W, A CHORD DISTANCE OF 144.85 FEET AND THROUGH A CENTRAL ANGLE OF 210°41'17", AN ARC DISTANCE OF 275.79 FEET; THENCE BEARING N23°56'51"W, A DISTANCE OF 64.00 FEET; THENCE ALONG SAID CURVE TO THE RIGHT (NON TANGENT), HAVING A RADIUS OF 75.00 FEET, A CHORD BEARING OF N18°39'09"E, A CHORD DISTANCE OF 39.59 FEET AND THROUGH A CENTRAL ANGLE OF 30°41'17", AN ARC DISTANCE OF 40.17 FEET; THENCE BEARING N23°56'51"W, A DISTANCE OF 23.95 FEET; THENCE ALONG SAID CURVE TO THE LEFT (TANGENT), HAVING A RADIUS OF 1,149.00 FEET, A CHORD BEARING OF N25°32'40"W, A CHORD DISTANCE OF 64.04 FEET AND THROUGH A CENTRAL ANGLE OF 03°11'37", AN ARC DISTANCE OF 64.05 FEET; THENCE BEARING N62°51'31"E, A DISTANCE OF 84.00 FEET; THENCE ALONG SAID CURVE TO THE RIGHT (NON TANGENT), HAVING A RADIUS OF 1,233.00 FEET, A CHORD BEARING OF S25°52'50"E, A CHORD DISTANCE OF 54.15 FEET AND THROUGH A CENTRAL ANGLE OF 02°30'59", AN ARC DISTANCE OF 54.15 FEET TO THE POINT OF BEGINNING.

ALL PUBLIC EASEMENTS LYING WITHIN THE ABOVE DESCRIBED TRACT OF LAND ARE HEREBY VACATED AND REPLATTED BY VIRTUE OF KSA 12-512(b) AMENDED.

JAMES R. BECKETT, R.L.S. NO. 832
 PROFESSIONAL ENGINEERING CONSULTANTS, P.A.

THIS ADDITION IS SUBJECT TO THE CONDITIONS OF OAK CREEK COMMUNITY UNIT PLAN (CUP 2004-09, DP-274).

EASEMENTS FOR THE CONSTRUCTION AND MAINTENANCE OF PUBLIC UTILITIES ARE HEREBY GRANTED.

RESERVE "A" IS HEREBY PLATTED FOR PRIVATE STREET, ENTRY MONUMENTS, GATES, DRAINAGE, LANDSCAPING, SIGNAGE, PARKING, AND UTILITIES. RESERVES "B" IS HEREBY PLATTED FOR ENTRY MONUMENTS, DRAINAGE, LANDSCAPING, SIDEWALKS, AND UTILITIES. RESERVES "C" AND "D" ARE HEREBY PLATTED FOR ENTRY MONUMENTS, GATES, LANDSCAPING, DRAINAGE, AND UTILITIES. RESERVE "E" IS HEREBY PLATTED FOR SIDEWALKS, DRAINAGE, UTILITIES, AND LANDSCAPING. RESERVES "A" THROUGH "E" SHALL BE OWNED AND MAINTAINED BY AN OWNER'S ASSOCIATION TO BE FORMED WITHIN GLENVIEW ADDITION.

A DRAINAGE PLAN HAS BEEN APPROVED FOR THIS PLAT. ALL DRAINAGE EASEMENTS, RIGHTS-OF-WAY, OR RESERVES SHALL REMAIN AT ESTABLISHED GRADES AND UNOBTSTRUCTED TO ALLOW FOR THE COMMENCEMENT OF STORM WATER, UNLESS MODIFIED WITH THE APPROVAL OF THE CITY ENGINEER.

KNOW ALL MEN BY THESE PRESENTS THAT WE, THE UNDERSIGNED PROPERTY OWNERS OF THE LAND AS ABOVE SET FORTH IN THE SURVEYOR'S CERTIFICATE, HAVE CAUSED THE LAND TO BE SURVEYED AND PLATTED INTO LOTS, BLOCKS, AND RESERVES; THE SAME TO BE KNOWN AS GLENVIEW ADDITION, AN ADDITION TO WICHITA, SEDGWICK COUNTY, KANSAS.

OWNERS:
 SLAWSON COMMERCIAL PROPERTIES, L.L.C.

 DAVID A. HAMBRICK, VICE PRESIDENT

STATE OF KANSAS }
 COUNTY OF SEDGWICK } SS

THIS INSTRUMENT WAS ACKNOWLEDGED BEFORE ME ON THIS 16TH DAY OF MARCH, 2012, BY DAVID A. HAMBRICK, VICE PRESIDENT OF SLAWSON COMMERCIAL PROPERTIES, L.L.C.

F. LYNN HOLLOWAY, NOTARY PUBLIC

MY APPOINTMENT EXPIRES: 7/27/13

WE, INTRUST BANK, N.A., HOLDER OF A MORTGAGE ON THE ABOVE DESCRIBED PROPERTY, DO HEREBY CONSENT TO THE PLATTING OF GLENVIEW ADDITION, AN ADDITION TO WICHITA, SEDGWICK COUNTY, KANSAS.

ROGER G. EASTWOOD, SENIOR VICE PRESIDENT

STATE OF KANSAS }
 COUNTY OF SEDGWICK } SS

THIS INSTRUMENT WAS ACKNOWLEDGED BEFORE ME ON THIS 16TH DAY OF March, 2012, BY ROGER G. EASTWOOD, SENIOR VICE PRESIDENT OF INTRUST BANK.

MELINDA A. JABARA, NOTARY PUBLIC

MY APPOINTMENT EXPIRES: 2/18/15

THIS PLAT OF GLENVIEW ADDITION HAS BEEN SUBMITTED TO AND APPROVED BY THE WICHITA-SEDGWICK COUNTY METROPOLITAN AREA PLANNING COMMISSION, WICHITA, KANSAS.

DATED THIS _____ DAY OF _____, 2012.

WICHITA-SEDGWICK COUNTY METROPOLITAN AREA PLANNING COMMISSION

SHAWN FARNEY, CHAIR

JOHN L. SCHLEGEL, SECRETARY

REVIEWED IN ACCORDANCE WITH K.S.A. 58-2005 ON THIS _____ DAY OF _____, 2012.

TRICIA L. ROBELLO, LS #1246
 DEPUTY COUNTY SURVEYOR
 SEDGWICK COUNTY KANSAS

THIS PLAT IS APPROVED AND ALL DEDICATIONS SHOWN HEREON, IF ANY ARE ACCEPTED BY THE CITY COUNCIL OF THE CITY OF WICHITA, KANSAS, THIS _____ DAY OF _____, 2012.

_____, MAYOR

KAREN SUBLETT, CITY CLERK

ENTERED ON TRANSFER RECORD THIS _____ DAY OF _____, 2012.

_____, COUNTY CLERK

THIS IS TO CERTIFY THAT THIS INSTRUMENT WAS FILED FOR RECORD IN THE REGISTER OF DEEDS OFFICE AT _____, M., ON THE _____ DAY OF _____, 2012.

BILL MBEK, REGISTER OF DEEDS

TONYA BUCKINGHAM, DEPUTY