

# DEER CREEK ESTATES

## Sedgwick County, Kansas

SW QUARTER SEC.24, T28S, R1W

STATE OF KANSAS)
SS
SEDGWICK COUNTY)

TERRA TECH LAND SURVEYING, INC., A CORPORATION REGISTERED AND AUTHORIZED TO PRACTICE LAND SURVEYING IN THE STATE OF KANSAS, HEREBY CERTIFIES THAT IT HAS SURVEYED AND PLATTED "DEER CREEK ESTATES", SEDGWICK COUNTY, KANSAS, AND THE ACCOMPANYING PLAT IS A TRUE AND CORRECT EXHIBIT OF SUCH SURVEY DESCRIBED AS:

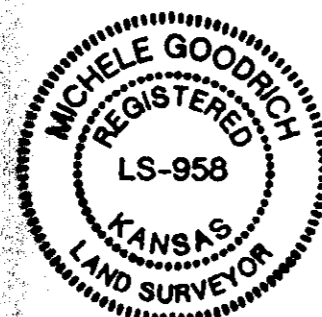
PART OF THE SOUTHWEST QUARTER OF SECTION 24, TOWNSHIP 28 SOUTH, RANGE 1 WEST OF THE SIXTH PRINCIPAL MERIDIAN, SEDGWICK COUNTY, KANSAS, MORE PARTICULARLY DESCRIBED AS FOLLOWS: FROM THE INTERSECTION OF THE EASTERLY RIGHT-OF-WAY LINE OF THE WICHITA - VALLEY CENTER FLOODWAY AND A LINE PARALLEL WITH AND 560 FEET SOUTH OF THE NORTH LINE OF SAID SOUTHWEST QUARTER; THENCE WITH AN ASSUMED BEARING OF NORTH 90°00' EAST, PARALLEL WITH SAID NORTH LINE OF SAID QUARTER, A DISTANCE OF 700 FEET TO THE POINT OF BEGINNING; THENCE SOUTH 0°00' EAST, A DISTANCE OF 430 FEET; THENCE SOUTH 90°00' WEST, A DISTANCE OF 145 FEET; THENCE SOUTH 53°05'33" WEST, A DISTANCE OF 185.55 FEET, MORE OR LESS, TO THE INTERSECTION WITH THE EASTERLY RIGHT-OF-WAY LINE OF SAID FLOODWAY; THENCE SOUTH 36°54'27" EAST ON SAID RIGHT-OF-WAY LINE, A DISTANCE OF 200 FEET; THENCE SOUTH 90°00' EAST, A DISTANCE OF 501.01 FEET; THENCE NORTH 0°00'30" EAST, PARALLEL WITH THE EAST LINE OF SAID QUARTER, A DISTANCE OF 1181.12 FEET, MORE OR LESS, TO THE INTERSECTION WITH A LINE PARALLEL WITH AND 560 FEET SOUTH OF THE NORTH LINE OF SAID QUARTER; THENCE NORTH 90°00' WEST, ON SAID LINE, A DISTANCE OF 688.23 FEET, MORE OR LESS, TO THE POINT OF BEGINNING.

AND

PART OF THE SOUTHWEST QUARTER OF SECTION 24, TOWNSHIP 28 SOUTH, RANGE 1 WEST OF THE SIXTH PRINCIPAL MERIDIAN, SEDGWICK COUNTY, KANSAS, MORE PARTICULARLY DESCRIBED AS FOLLOWS: FROM THE INTERSECTION OF THE EASTERLY RIGHT-OF-WAY LINE OF THE WICHITA - VALLEY CENTER FLOODWAY AND A LINE PARALLEL WITH AND 560 FEET SOUTH OF THE NORTH LINE OF SAID SOUTHWEST QUARTER; THENCE WITH AN ASSUMED BEARING OF SOUTH 36°54'27" EAST, ON SAID EASTERLY RIGHT-OF-WAY LINE, A DISTANCE OF 1477.12 FEET TO THE POINT OF BEGINNING; THENCE SOUTH 90°00' WEST, PARALLEL WITH THE NORTH LINE OF SAID SOUTHWEST QUARTER, A DISTANCE OF 501.01 FEET; THENCE SOUTH 0°00'30" WEST, PARALLEL WITH THE EAST LINE OF SAID QUARTER, A DISTANCE OF 35 FEET; THENCE SOUTH 90°00' WEST A DISTANCE OF 474.72 FEET, MORE OR LESS, TO THE INTERSECTION WITH THE EASTERLY RIGHT-OF-WAY LINE OF SAID FLOODWAY; THENCE NORTH 36°54'27" WEST, ON SAID RIGHT-OF-WAY LINE, A DISTANCE OF 43.77 FEET TO THE POINT OF BEGINNING.

TERRA TECH LAND SURVEYING, INC.

MICHELE GOODRICH LS #958 DATE



KNOW ALL MEN BY THESE PRESENTS THAT WE, THE UNDERSIGNED OWNERS OF THE LAND DESCRIBED IN THE SURVEYOR'S CERTIFICATE, HAVE CAUSED THE SAME TO BE SURVEYED AND PLATTED INTO LOTS, STREETS AND A FLOODWAY, TO BE KNOWN AS "DEER CREEK ESTATES", SEDGWICK COUNTY, KANSAS. THE STREETS ARE HEREBY DEDICATED TO AND FOR THE USE OF THE PUBLIC. EASEMENTS AS INDICATED FOR THE CONSTRUCTION AND MAINTENANCE OF PUBLIC UTILITIES ARE HEREBY GRANTED. ALL ABUTTERS' RIGHTS OF ACCESS TO OR FROM WEST STREET OVER AND ACROSS THE WESTERLY LINE OF LOTS 1, 2 AND 10 ARE HEREBY GRANTED TO SEDGWICK COUNTY, PROVIDED, HOWEVER, THAT LOT 1 SHALL HAVE ACCESS TO WEST STREET AT ONE LOCATION, AS SHALL BE DETERMINED BY THE COUNTY ENGINEER OF SEDGWICK COUNTY, KANSAS. THE FLOODWAY SHALL BE THE RESPONSIBILITY OF THE OWNERS OF LOTS 1, 2, 3, 4, 5, 6, 8, 9, 10, 11, 12 AND 13, "DEER CREEK ESTATES" UNTIL SUCH TIME AS THE GOVERNING BODY EXERCISING JURISDICTION ELECTS TO ASSUME THE RESPONSIBILITY FOR MAINTENANCE AND IMPROVEMENT OF THE DRAINAGE. NO BUILDING SHALL BE CONSTRUCTED ON OR WITHIN SAID FLOODWAY; NOR SHALL ANY FILL, CHANGE OF GRADE, CREATION OF CHANNEL OR OTHER WORK BE CARRIED ON WITHOUT PERMISSION OF THE APPROPRIATE GOVERNING BODY. NO BUILDING SHALL BE CONSTRUCTED BELOW A MINIMUM PAD ELEVATION (LOWEST OPENING) OF 1275 MEAN SEA LEVEL.

JAMES W. WEED I. SUE WEED

STATE OF KANSAS)
SS
SEDGWICK COUNTY)

THIS INSTRUMENT WAS ACKNOWLEDGED BEFORE ME THIS DAY OF 1991, BY JAMES W. WEED AND I. SUE WEED, HUSBAND AND WIFE.

NOTARY PUBLIC

MY COMMISSION EXPIRES:

THIS PLAT OF "DEER CREEK ESTATES", SEDGWICK COUNTY, KANSAS, HAS BEEN SUBMITTED TO AND APPROVED BY THE WICHITA-SEDGWICK COUNTY METROPOLITAN AREA PLANNING COMMISSION, WICHITA, KANSAS.

DATED THIS DAY OF 1991.

WICHITA-SEDGWICK COUNTY
METROPOLITAN AREA PLANNING COMMISSION

CHAIRMAN

GEORGE D. SHERMAN

SECRETARY

MARVIN S. KROUT

THIS PLAT APPROVED AND ALL DEDICATIONS SHOWN HEREON ARE ACCEPTED BY THE CITY COUNCIL OF THE CITY OF WICHITA, KANSAS, THIS DAY OF 1991.

WICHITA CITY COUNCIL

MAYOR

BOB KNIGHT

DEPUTY CITY CLERK

PAT BURNETT

THIS PLAT APPROVED AND ALL DEDICATIONS SHOWN HEREON ACCEPTED BY THE BOARD OF COUNTY COMMISSIONERS OF SEDGWICK COUNTY, KANSAS, THIS DAY OF 1991.

BOARD OF COUNTY COMMISSIONERS

CHAIRMAN

BILLY Q. MCCRAY

CHAIR PRO TEM

BETSY GWIN

COMMISSIONER

PAUL W. HANCOCK

COMMISSIONER

BERNARD A. HENTZEN

COMMISSIONER

MARK F. SCHROEDER

ATTEST: COUNTY CLERK

DON WRIGHT

STATE OF KANSAS)
SS
SEDGWICK COUNTY)

THIS IS TO CERTIFY THAT THIS INSTRUMENT WAS FILED FOR RECORD IN THE REGISTER OF DEEDS OFFICE ON THE DAY OF 1991, AT O'CLOCK .M.

REGISTER OF DEEDS

PAT KETTLER

CHIEF DEPUTY

ED RESA

ENTERED ON TRANSFER RECORD THIS DAY OF 1991.

COUNTY CLERK

DON WRIGHT

# DEER CREEK ESTATES

Sedgwick County, Kansas

SW QUARTER SEC. 24, T28S, R1W

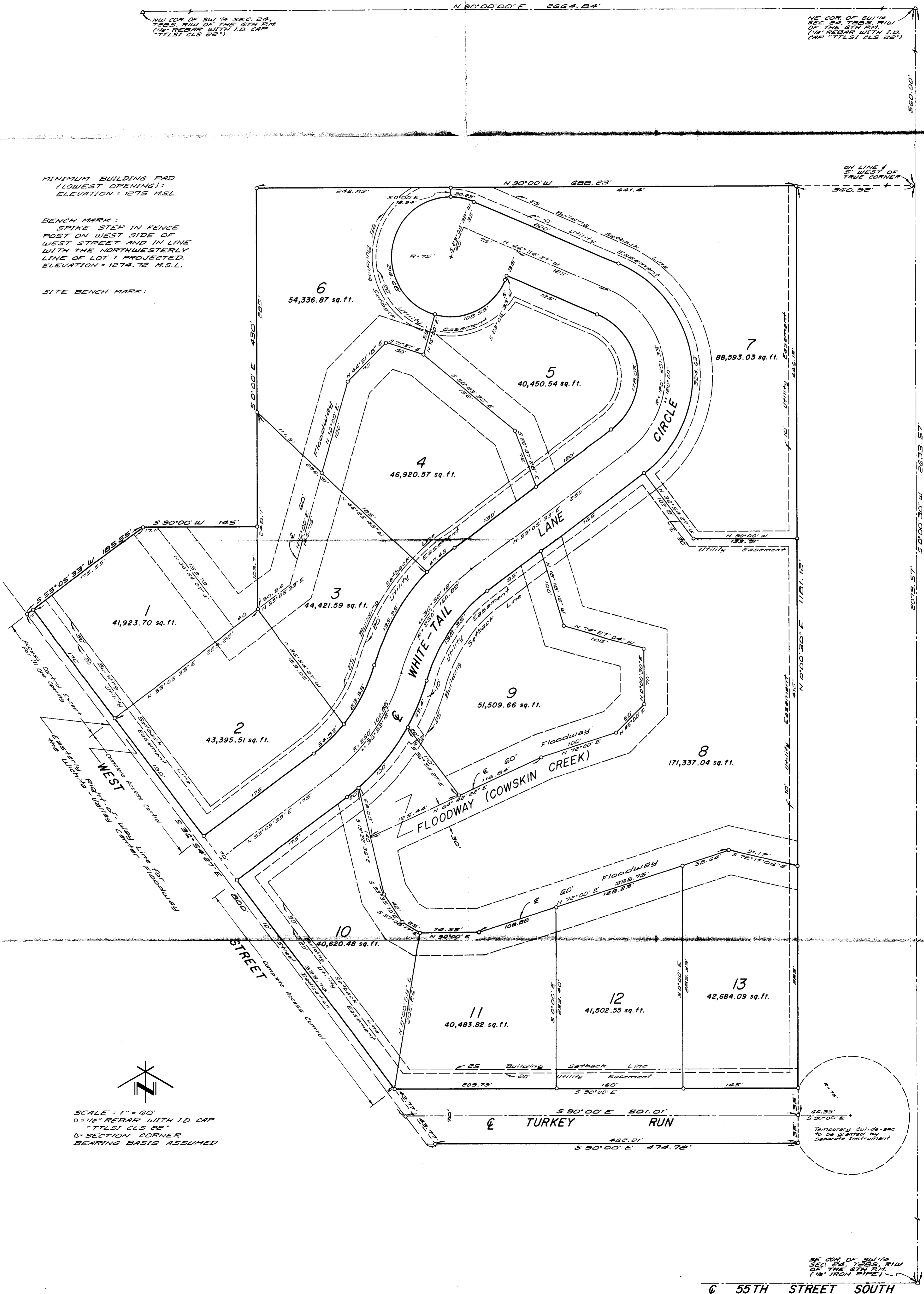
NW COR. OF SW 1/4 SEC. 24, T28S, R1W OF THE 6TH P.M. (1/2" REBAR WITH I.D. CAP "TTLST. CLS 22")

NE COR. OF SW 1/4 SEC. 24, T28S, R1W OF THE 6TH P.M. (1/2" REBAR WITH I.D. CAP "TTLST. CLS 22")

MINIMUM BUILDING PAD (LOWEST OPENING):  
ELEVATION = 1275 M.S.L.

BENCH MARK:  
SPIKE STEP IN FENCE POST ON WEST SIDE OF WEST STREET AND IN LINE WITH THE NORTHWESTERLY LINE OF LOT 1 PROJECTED.  
ELEVATION = 1274.72 M.S.L.

SITE BENCH MARK:



SCALE: 1" = 60'  
0 = 1/2" REBAR WITH I.D. CAP "TTLST. CLS 22"  
D = SECTION CORNER  
BEARING BASIS ASSUMED

SE COR. OF SW 1/4 SEC. 24, T28S, R1W OF THE 6TH P.M. (1/2" IRON PIPE)

55TH STREET SOUTH