

OFFICE COPY

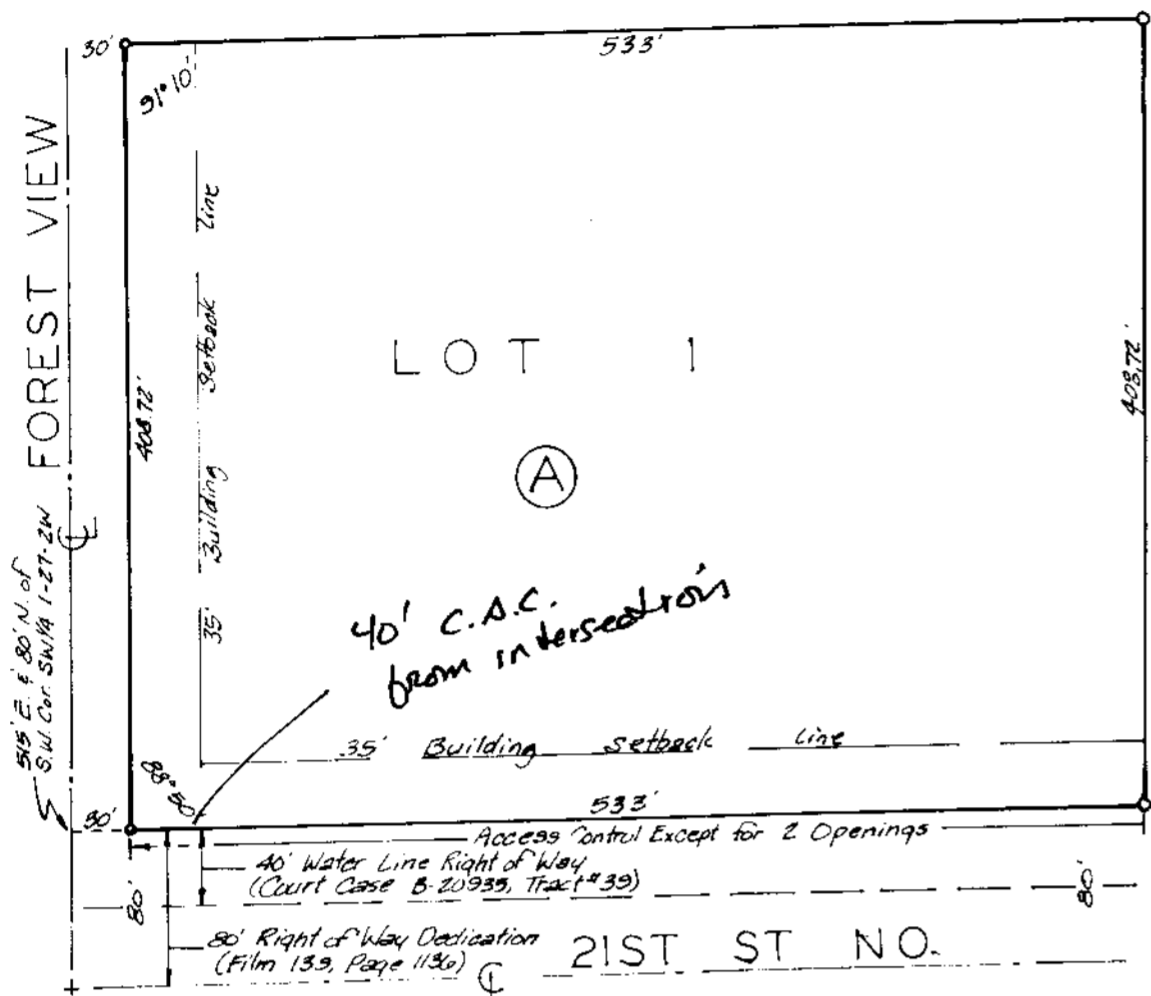
DO NOT REMOVE

THIS PLAT APPROVED BY THE SUBDIVISION COMMITTEE ON 10/23/86 SUBJECT TO THE CONDITIONS OF APPROVAL OUTLINED IN OUR LETTER DATED 10/23/86

COUNTRYSIDE PENTECOSTAL HOLINESS CHURCH ADDITION

SEDGWICK COUNTY, KANSAS

FINAL PLAT



State of Kansas Sedgwick County We, Baughman Company, P.A. Surveyors in aforesaid county and state do hereby certify that we have surveyed and platted 'COUNTRYSIDE PENTECOSTAL HOLINESS CHURCH ADDITION'...

Date Baughman Company, P.A. Surveyor

This plat of 'COUNTRYSIDE PENTECOSTAL HOLINESS CHURCH ADDITION', Sedgwick County, Kansas, has been submitted to and approved by the Wichita-Sedgwick County Metropolitan Area Planning Commission, Wichita, Kansas. Dated this day of 198...

John Terry Moore Chairman Michael E. Lindebak Secretary

Know all men by these presents that we, the undersigned, have caused the land described in the surveyors certificate to be platted into a lot and block to be known as 'COUNTRYSIDE PENTECOSTAL HOLINESS CHURCH ADDITION'...

Countryside Pentecostal Holiness Church Inc. Edward L. Huffman Trustee

This plat approved and all dedications shown hereon accepted by the Board of Commissioners of the City of Wichita, Kansas, this day of 198...

Tony Casado Mayor Donald C. Giesick City Clerk

State of Kansas Sedgwick County The foregoing instrument acknowledged before me this day of 198 by of Countryside Pentecostal Holiness Church Inc., on behalf of the Corporation.

My Appt. Exp. Notary Public

This plat approved and all dedications shown hereon accepted by the Board of Commissioners, Sedgwick County, Kansas, this day of 198...

Bernard A. Hentzen Chairman Donald E. Graag Commissioner Tom Scott Commissioner Don Wright County Clerk

Entered on transfer record this day of 198 Don Wright County Clerk

State of Kansas Sedgwick County This is to certify that this plat has been filed for record in the office of the Register of Deeds this day of 198, at o'clock M; and is duly recorded.

Pat Kettler Register of Deeds Ed Resa Deputy

October 31, 1986

Baughman Company, P.A.
315 Ellis
Wichita, KS 67211

Re: Final Plat S/D 86-90 - COUNTRYSIDE PENTECOSTAL
HOLINESS CHURCH ADDITION

Dear Gentlemen:

At the regular meeting of the Metropolitan Area Planning Commission on October 30, 1986, the above-captioned plat was considered. The action of the Planning Commission was to recommend that the plat be approved as recommended by the Subdivision Committee subject to the conditions stated in our letter of October 24, 1986.

In addition to complying with those conditions, it is necessary that you meet the following requirements before this plat can be forwarded to the Board of City Commissioners for consideration:

1. Submission of the fully completed and signed tracing of the subdivision to the Metropolitan Area Planning Department.
2. Submission of a title report by an abstract or title insurance company or an attorney's opinion that fee title is vested in the plattor.
3. Certification that all real estate taxes for the first half of 1986 and all prior years have been paid.

Please call if you have any questions.

Sincerely,

Forrest L. Nagley
Senior Planner

FLN:dlk

cc: Countryside Pentecostal Holiness Church, Inc., c/o Edward L. Huffman,
P.O. Box 91, Maize, KS 67101
Terry Irwin, 2231 Forest View, Wichita, KS 67223