

**Ewy Addition
to Sedgwick County, Kansas**

FINAL TRACING REC'D

5-09-06
(SUB 2005-142)



LEGEND:

- = SET 1/2" REBAR WITH CLS #168 CAP
- ▲ = FOUND 1/2" REBAR WITH CLS #168 CAP (UNLESS OTHERWISE NOTED)
- ⊙ = CALCULATED POINT
- (M) = MEASURED OR CALCULATED FROM MEASUREMENT
- (P) = PLATTED

CERTIFICATE OF SURVEY
State of Kansas }
County of Sedgwick } SS

We, Benchmark Land Survey, P.A., Surveyors in aforesaid county and state and do hereby certify that we have surveyed and platted "Ewy Addition" to Sedgwick County, Kansas and that the accompanying plat is a true and correct exhibit of said survey described as follows:

A parcel in the Northwest Quarter of Section 1, Township 28 South, Range 3 West of the Sixth Principal Meridian, Sedgwick County, Kansas, described as follows: Beginning at the Northwest Corner of the South half of the South half of the South half of said Northwest Quarter; thence N00°00'00"E (Assumed) along the west line of said Northwest Quarter for 400.00 feet; thence S88°30'39"E parallel with the North line of said South half for a distance of 544.68 feet; thence S00°00'00"W for a distance of 400.00 feet to a point on said North line; thence N88°30'39"W along said line for 544.68 feet to the Point of Beginning. Said parcel contains 5.0 acres more or less. Subject to existing Road Right-of-Way.

I hereby certify that the details of this plat are correct to the best of my knowledge and belief this ___ day of ___, 2006.

Chad R. Abbott, L.S. #1340

OWNER'S CERTIFICATE
State of Kansas }
County of Sedgwick } SS

Know all men by these presents that I the undersigned owner of the land as above set forth in the Surveyor's Certificate, have caused the same to be surveyed and platted into a lot and a block, the same to be known as "Ewy Addition" to Sedgwick County, Kansas. The 60' Street Right-of-Way along 231st Street is hereby dedicated to and for the use of the public. The 20' utility easement is hereby dedicated to Sedgwick County Electric Cooperative Association, Inc. Access control as shown on the face of this plat is hereby granted to the appropriate governing body. A drainage plan has been developed for the plat and all drainage easements, rights-of-ways, or reserves shall remain at established grades or as modified with the approval of the applicable City or County Engineer, and will remain unobstructed to allow for the conveyance of stormwater.

David Ewy Paula Ewy

NOTARY CERTIFICATE
State of Kansas }
County of Sedgwick } SS

Be it remembered that on this ___ day of ___, 2006, before me a notary public in and for said County and State, came David Ewy and Paula Ewy to me personally known to be the same person who executed the foregoing instrument of writing and duly acknowledged the execution of the same, in testimony whereof, I have hereunto set my hand and affixed my notarial seal the day and year above written.

Sworn before me this ___ day of ___, 2006.

Angie Best, Notary Public

My appointment expires: October 29, 2008.

PLANNING AGENCY CERTIFICATE
State of Kansas }
County of Sedgwick } SS

This plat of "Ewy Addition" to Sedgwick County, Kansas, has been submitted to and approved by the Wichita-Sedgwick County Metropolitan Area Planning Commission, Wichita, Kansas.

Dated this ___ day of ___, 2006.

WICHITA-SEDGWICK COUNTY METROPOLITAN PLANNING COMMISSION

Harold L. Warner, Jr., Chairman
John L. Schlegel, Secretary

COUNTY SURVEYOR CERTIFICATE

Reviewed in accordance with K.S.A. 58-2005 on this ___ day of ___, 2006.

Tricia L. Robello #1248
Deputy County Surveyor
Sedgwick County, Kansas

COUNTY COMMISSIONER CERTIFICATE

State of Kansas }
County of Sedgwick } SS

This plat approved and all dedications shown hereon, if any, accepted by the Board of County Commissioners of Sedgwick County, Kansas, this ___ day of ___, 2006.

Ben Sciorlino, Chairman ATTEST: Don Broce, County Clerk

TRANSFER RECORD

Entered on transfer record this ___ day of ___, 2006.

Don Broce, County Clerk

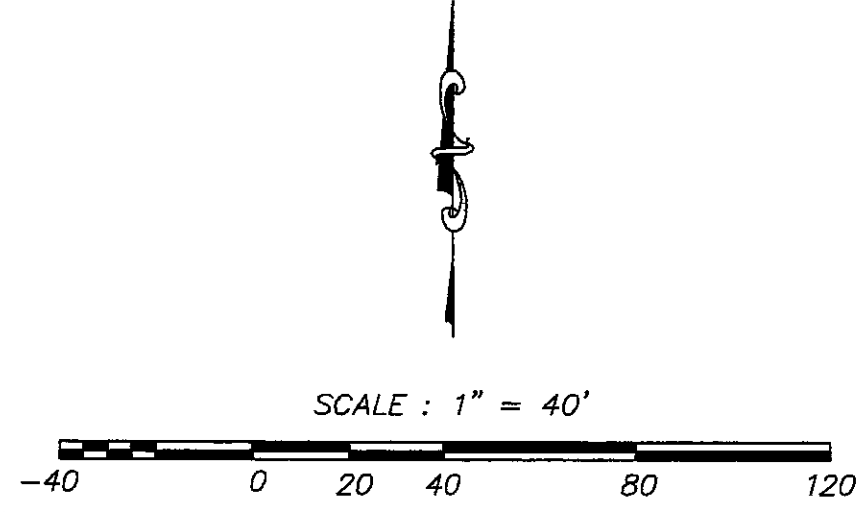
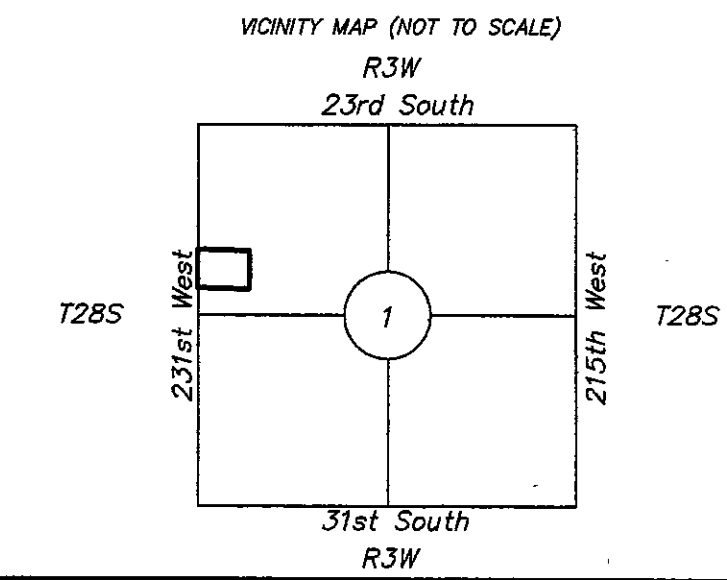
REGISTER OF DEEDS CERTIFICATE

State of Kansas }
County of Sedgwick } SS

This is to certify that this instrument was filed for record in the Register of Deeds Office, at ___ a.m.-p.m., on the ___ day of ___, 2006.

Bill Meek, Register of Deeds

Tonya Buckingham, Deputy



JOB DESCRIPTION: Final Plat	
PREPARED FOR: David Ewy	
JOB LOCATION: NW 1-28-3W	DATE OF PREPARATION: January 18, 2006
JOB NUMBER: 6237	SHEET 1 OF 1
DRAWN BY: A.M.K. CHECKED BY: C.A.L.	

