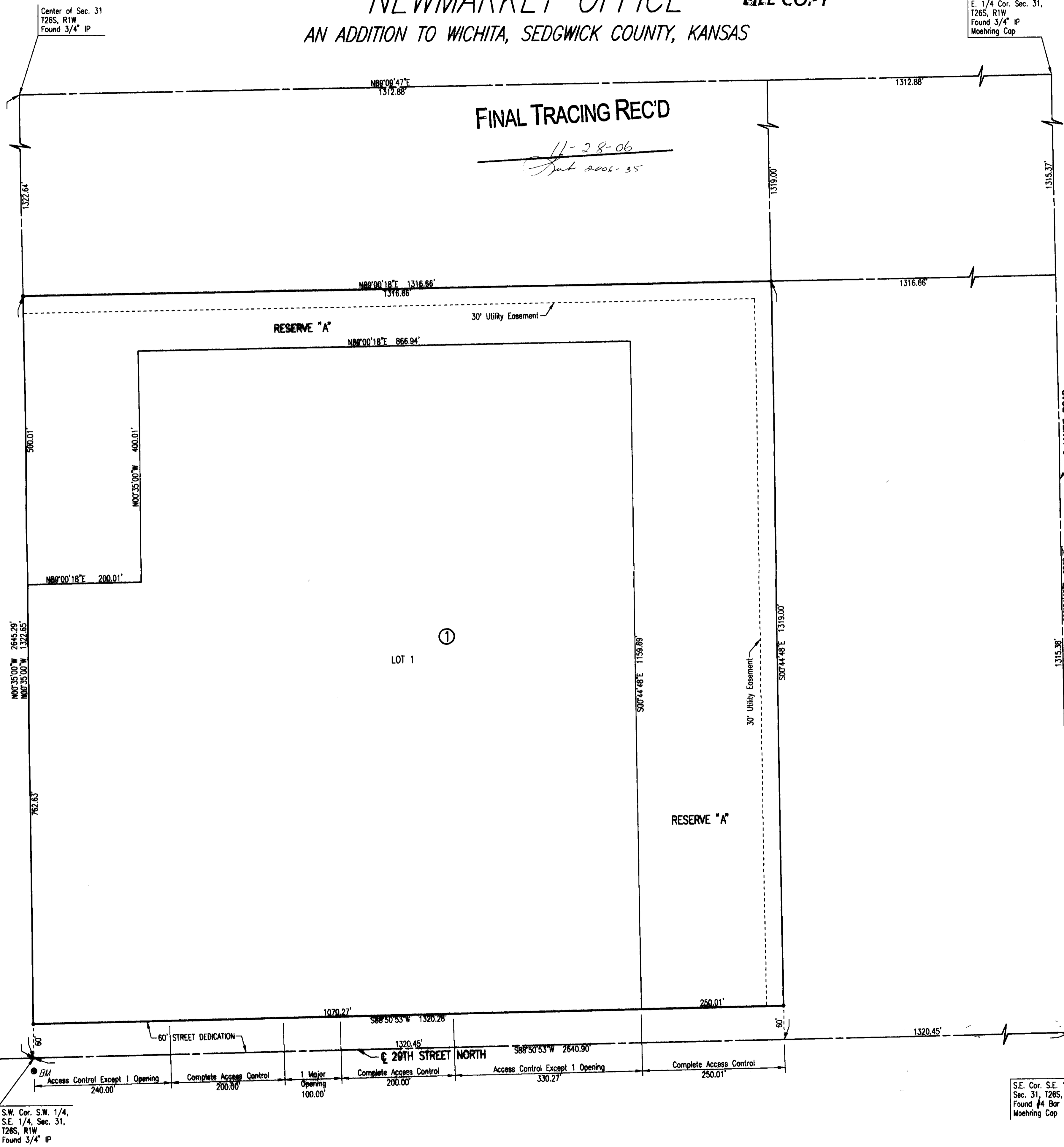


NEWMARKET OFFICE

AN ADDITION TO WICHITA, SEDGWICK COUNTY, KANSAS

FILE COPY



E. 1/4 Cor. Sec. 31,
T26S, R1W
Found 3/4" IP
Moehring Cap

SCALE: 1" = 100'

- = 1/2" REBAR W/PEC CAP UNLESS OTHERWISE NOTED
- ⊕ BM = BENCHMARK

BENCHMARK:
CITY OF WICHITA STANDARD 3" BRASS DISK SET IN CONCRETE, FLUSH WITH THE GROUND, 0.5 MILES WEST OF MAIZE ROAD AT THE SOUTH RIGHT OF WAY OF 29TH STREET NORTH AT POLE LINE.

ELEVATION: 178.29 CITY DATUM
1365.69 N.G.V.D.

STATE OF KANSAS }
COUNTY OF SEDGWICK } SS

WE, PROFESSIONAL ENGINEERING CONSULTANTS, P.A., ENGINEERS AND SURVEYORS IN AFORESAID STATE AND COUNTY, DO HEREBY CERTIFY THAT THIS 21ST DAY OF NOVEMBER, 2006, WE HAVE SURVEYED AND PLATTED NEWMARKET OFFICE, AN ADDITION TO WICHITA, SEDGWICK COUNTY, KANSAS, INTO A LOT, BLOCK, AND RESERVE THE SAME BEING DESCRIBED AS FOLLOWS:

THE SOUTHWEST QUARTER OF THE SOUTHEAST QUARTER OF SECTION 31, TOWNSHIP 26 SOUTH, RANGE 1 WEST OF THE SIXTH PRINCIPAL MERIDIAN, SEDGWICK COUNTY, KANSAS.

ALL PUBLIC EASEMENTS LYING WITHIN THE ABOVE DESCRIBED TRACT OF LAND ARE HEREBY VACATED AND REPLATTED BY VIRTUE OF KSA 12-512(b) AMENDED.

ALL ABUTTERS RIGHT OF ACCESS TO AND FROM 29TH STREET NORTH OVER AND ACROSS THE SOUTH PROPERTY LINE IS HEREBY GRANTED TO THE CITY OF WICHITA, PROVIDED HOWEVER THAT THERE SHALL BE ACCESS TO 29TH STREET NORTH AT THREE OPENINGS. ALL ACCESS OPENINGS SHALL BE IN ACCORDANCE WITH MINIMUM SPACING REQUIREMENTS OF THE WICHITA/SEDGWICK COUNTY ACCESS MANAGEMENT STANDARDS.

JAMES R. BECKETT, R.L.S. NO. 832
 PROFESSIONAL ENGINEERING CONSULTANTS, P.A.

FEMA FLOOD PLAIN AND REGULATORY FLOODWAY BOUNDARIES ARE SUBJECT TO PERIODIC CHANGE, AND SUCH CHANGE MAY AFFECT THE INTENDED LAND USE WITHIN THE SUBDIVISION.

RESERVE "A" IS HEREBY PLATTED FOR DRAINAGE, LAKES, LANDSCAPING, RECREATIONAL USES, SIDEWALKS, AND UTILITIES, CONFINED TO EASEMENTS. RESERVE "A" SHALL BE OWNED AND MAINTAINED BY AN OWNER'S ASSOCIATION TO BE FORMED WITHIN NEWMARKET OFFICE ADDITION.

EASEMENTS FOR THE CONSTRUCTION AND MAINTENANCE OF PUBLIC UTILITIES ARE HEREBY GRANTED.

THE 60' STREET DEDICATION ALONG THE SOUTH PROPERTY LINE IS HEREBY DEDICATED TO AND FOR THE USE OF THE PUBLIC.

A DRAINAGE PLAN HAS BEEN APPROVED FOR THIS PLAT. ALL DRAINAGE EASEMENTS, RIGHTS-OF-WAY, OR RESERVES SHALL REMAIN AT ESTABLISHED GRADES AND UNOBSTRUCTED TO ALLOW FOR THE CONVEYANCE OF STORM WATER, UNLESS MODIFIED WITH THE APPROVAL OF THE CITY ENGINEER.

KNOW ALL MEN BY THESE PRESENTS THAT WE, THE UNDERSIGNED PROPERTY OWNERS OF THE LAND AS ABOVE SET FORTH IN THE SURVEYOR'S CERTIFICATE, HAVE CAUSED THE LAND TO BE SURVEYED AND PLATTED INTO A LOT, BLOCK, AND RESERVE THE SAME TO BE KNOWN AS NEWMARKET OFFICE, AN ADDITION TO WICHITA, SEDGWICK COUNTY, KANSAS.

OWNERS:
NEWMARKET OFFICE, LLC, A KANSAS LIMITED LIABILITY COMPANY

 GEORGE SHERMAN, VICE PRESIDENT

S.E. Cor. S.E. 1/4
Sec. 31, T26S, R1W
Found #4 Bar w/
Moehring Cap

STATE OF KANSAS }
COUNTY OF SEDGWICK } SS

THIS INSTRUMENT WAS ACKNOWLEDGED BEFORE ME ON THIS 21ST DAY OF

Nov, 2006, BY KENT G. VOTH, CORPORATE COUNSEL OF

NEWMARKET OFFICE, LLC, A KANSAS LIMITED LIABILITY COMPANY

KENT G. VOTH, NOTARY PUBLIC

MY APPOINTMENT EXPIRES: Sept 2, 2007

STATE OF KANSAS }
COUNTY OF SEDGWICK } SS

THIS PLAT OF NEWMARKET OFFICE, AN ADDITION TO WICHITA, SEDGWICK COUNTY, KANSAS, HAS BEEN SUBMITTED TO AND APPROVED BY THE WICHITA-SEDGWICK COUNTY METROPOLITAN AREA PLANNING COMMISSION, WICHITA, KANSAS.

DATED THIS _____ DAY OF _____, 2006.

WICHITA-SEDGWICK COUNTY METROPOLITAN AREA PLANNING COMMISSION

_____, CHAIRMAN
DARRELL A. DOWNING

_____, SECRETARY
JOHN L. SCHLEGEL

REVIEWED IN ACCORDANCE WITH K.S.A. 58-2005 ON THIS _____ DAY

OF _____, 2006.

TRICIA L. ROBELLO, LS #1246
DEPUTY COUNTY SURVEYOR
SEDGWICK COUNTY KANSAS

ENTERED ON TRANSFER RECORD THIS _____ DAY OF _____, 2006.

_____, COUNTY CLERK
DON BRACE

THIS IS TO CERTIFY THAT THIS INSTRUMENT WAS FILED FOR RECORD IN THE

REGISTER OF DEEDS OFFICE AT _____ M., ON THE _____ DAY

OF _____, 2006.

_____, REGISTER OF DEEDS
BILL MEEK

_____, DEPUTY
TONYA BUCKINGHAM

THIS PLAT IS APPROVED AND ALL DEDICATIONS SHOWN HEREON, IF ANY ARE ACCEPTED BY THE CITY COUNCIL OF THE CITY OF WICHITA, KANSAS, THIS

_____ DAY OF _____, 2006.

_____, MAYOR
CARLOS MAYANS

_____, CITY CLERK
KAREN SUBLETT

Saved 11-20-2006 8:57:10 AM by ALE
 Plot Scale: 1"=100'
 11/20/06 08:57:10 AM