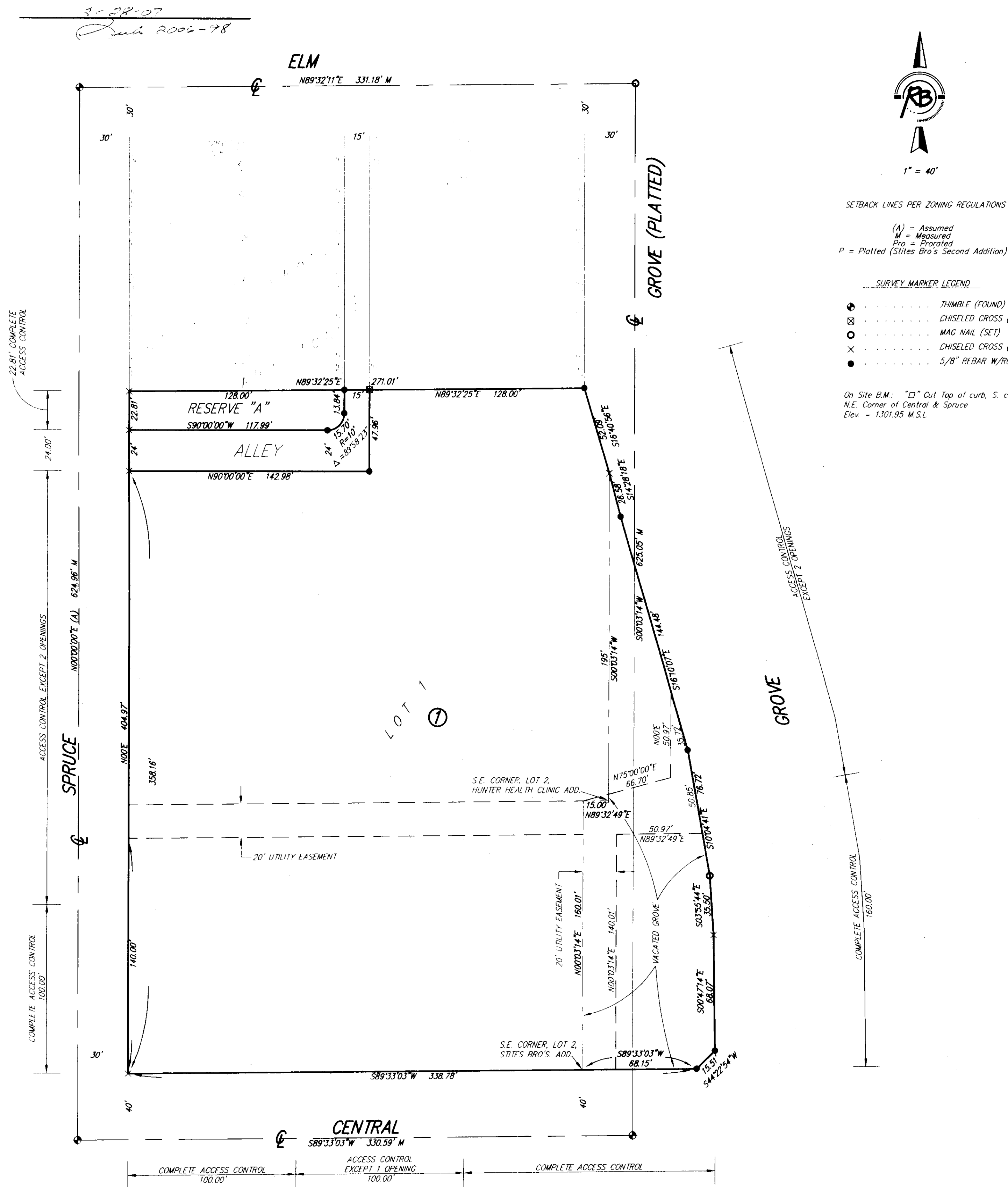


# HUNTER HEALTH CLINIC 2ND ADDITION

FILE COPY  
FINAL TRACING REC'D

Wichita, Sedgwick County, Kansas



SETBACK LINES PER ZONING REGULATIONS  
(A) = Assumed  
M = Measured  
P = Platted (Stites Bro's Second Addition)

- SURVEY MARKER LEGEND
- THIMBLE (FOUND)
  - ⊗ CHISELED CROSS (FOUND)
  - MAG NAIL (SET)
  - ⊗ CHISELED CROSS (SET)
  - 5/8" REBAR W/ RUGGLES & BOHM CAP (SET)

On Site B.M.: "□" Cut Top of curb, S. curb return at N.E. Corner of Central & Spruce. Elev. = 1301.95 M.S.L.

State of Kansas) SS  
Sedgwick County)

We, Ruggles & Bohm, P.A., Land Surveyors in aforesaid county and state, do hereby certify that, under the supervision of the undersigned, we have surveyed and platted "HUNTER HEALTH CLINIC 2ND ADDITION", Wichita, Sedgwick County, Kansas, and that the accompanying plat is a true and correct exhibit of the property surveyed, described as follows:

Lots 2 and 4, the west 5.00 feet of the south 72.00 feet of Lot 18, the south 72.00 feet of Lots 20 and 22 on Central, Lots 6 through 20 even on Spruce, Stites Bro's. Second Addition to Wichita, Kansas, Sedgwick County, Kansas, AND Lots 1 and 2, Hunter Health Clinic Addition, Wichita, Sedgwick County, Kansas, AND the Alleys lying between Spruce and Grove and between Central and the the extended north line of Lot 20, in said Stites Bro's. Second Addition, AND that part of Grove described as beginning at the S.E. corner of Lot 2 on Central, in said Stites Bro's. Second Addition; thence N00°03'14"E, along the east line of said Lot 2 and extended north, 160.01 feet to the south line of Lot 2, in said Hunter Health Clinic Addition; thence N89°32'49"E, along said south line, 15.00 feet to the S.E. corner of said Lot 2; thence N00°03'14"E, along the east line of said Lot 2, 195.00 feet to a point of intersection on said east line; thence S14°28'18"E, 26.58 feet; thence S16°10'07"E, 144.48 feet; thence S10°04'41"E, 76.72 feet; thence S03°35'44"E, 35.50 feet; thence S00°47'14"E, 68.07 feet; thence S44°22'54"W, 15.51 feet to the north line of Central; thence S89°33'03"W, along said north line, 68.15 feet to the place of beginning.

All public easements and dedications are hereby vacated by virtue of K.S.A. 12-512(b).

Ruggles & Bohm, P.A.

*Thomas C. Ruggles*  
Thomas C. Ruggles  
Land Surveyor

Know all men by these presents that we, the undersigned, have caused the land described in the surveyor's certificate to be platted into a Lot, a Block, an Alley and a Reserve to be known as "HUNTER HEALTH CLINIC 2ND ADDITION", Wichita, Sedgwick County, Kansas. Access Controls as indicated are hereby granted to the appropriate governing body. Utility Easements are hereby granted for the construction and maintenance of all public utilities. Reserve "A" is hereby reserved for landscaping, parking and lighting. The Reserve is to be owned and maintained by the owners of Lot 1, Block A. A drainage plan has been developed for this plat; the property shall remain at established grades, or as modified with the approval of the City Engineer, and unobstructed to allow for the conveyance of storm water.

Hunter Health Clinic, Inc.

*Suzette M. Schwartz*  
Suzette M. Schwartz  
CEO

State of Kansas) SS  
Sedgwick County)

The foregoing instrument acknowledged before me, this 28<sup>th</sup> day of March, 2007, by Suzette M. Schwartz, CEO, on behalf of Hunter Health Clinic, Inc.

*Mildred E. Franz*  
Mildred E. Franz  
Notary Public

My appointment expires 02-13-2011

We the undersigned, holders of a mortgage on a portion of the above described property, do hereby consent to this plat of "HUNTER HEALTH CLINIC 2ND ADDITION", Wichita, Sedgwick County, Kansas.

*Ron D. Heikes*  
Ron D. Heikes  
Senior Vice President  
Southwest National Bank

State of Kansas) SS  
Sedgwick County)

The foregoing instrument acknowledged before me this 28<sup>th</sup> day of March, 2007, by Ron D. Heikes, Senior Vice President of Southwest National Bank, on behalf of the Bank.

*John L. Schlegel*  
John L. Schlegel  
Notary Public

My appointment expires June 22, 2008

This plat of "HUNTER HEALTH CLINIC 2ND ADDITION", Wichita, Sedgwick County, Kansas, has been submitted to and approved by the Wichita-Sedgwick County Metropolitan Area Planning Commission, Wichita, Kansas.

Dated this \_\_\_ day of \_\_\_, 2007.  
Wichita-Sedgwick County Metropolitan Area Planning Commission

*Darrell A. Downing*  
Darrell A. Downing  
Chair  
*John L. Schlegel*  
John L. Schlegel  
Secretary

This plat approved and all dedications shown hereon accepted by the City Council of the City of Wichita, Kansas, this \_\_\_ day of \_\_\_, 2007.

At the Direction of the City Council  
*Carlos Moyans*  
Carlos Moyans  
Mayor  
*Karen Sublett*  
Karen Sublett  
City Clerk

Reviewed in accordance with K.S.A. 58-2005 on this 1<sup>st</sup> day of March, 2007.

*Tricia L. Surber*  
Tricia L. Surber  
Deputy County Surveyor  
Sedgwick County Kansas

Entered on transfer record this \_\_\_ day of \_\_\_, 2007.

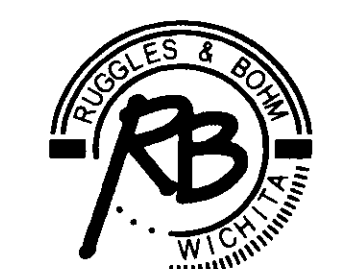
*Don Brace*  
Don Brace  
County Clerk

State of Kansas) SS  
Sedgwick County)

This is to certify that this plat has been filed for record in the office of the Register of Deeds, this \_\_\_ day of \_\_\_, 2007, at \_\_\_ o'clock \_\_\_ M, and is duly recorded.

*Bill Meek*  
Bill Meek  
Register of Deeds

*Tonya Buckingham*  
Tonya Buckingham  
Deputy



Ruggles & Bohm, P.A.  
Engineering, Surveying, Land Planning

DWG FILE: SURVEY BASE  
PROJECT NO. 2813P  
FEBRUARY 5, 2007

924 North Main (316) 264-8008  
Wichita, Kansas 67203 (316) 264-4621 fax  
www.rbkansas.com E-mail: info@rbkansas.com